

Impressions

Instruments

Cements

Burs

Restorative materials

Tooth whitening

Polishers

Prosthetics

Orthodontics

(Disposables)

Posts

Needles, Biomaterials and Sutures

Disinfection

Laboratory

Endodontics

Discover all our new products

Thanks to your trust, we are always updating and expanding our product range, so we can continue offering you the solutions you need.

And as always, the best quality is guaranteed.

Quality backed by years of experience

With more than 30 years of experience in the dental care sector, we can now offer you a complete range of top-quality products developed to meet the requirements of the most meticulous dental professionals.

JULIÁN RANEDA DE LA HOZ

Business Development Director



CONTENTS

Restorative materials

- Etching gel Page 12
- Fine matrix strips Page 12
- Jumbo acid Page 12
- Matrix strips Page 12
- Micro-applicators Page 10
- Monocomponent adhesive Page 10
- Proclinic Expert Bulk Fill Composite Pages 6 and 7
- Proclinic Expert ceramic primer Page 14
- Proclinic Expert hydrofluoric acid Page 15
- Proclinic Expert glass ionomer for posterior restorations Page 15
- Proclinic Expert LC glass ionomer restorative Page 15
- Proclinic Expert LED curing light Page 13
- Proclinic Expert Micro Hybrid Composite Page 9
- Proclinic Expert Nano Flow Composite Page 8
- Proclinic Expert Nano Hybrid Composite Pages 4 and 5
- Proclinic Expert radiometer Page 13
- Proclinic Expert self-etch adhesive Page 10
- Proclinic Expert total-etch adhesive Page 10
- Proclinic Expert universal adhesive Page 11
- PVC mixing pads Page 10
- Silane Page 15
- Transparent wedges Page 12

Impression

- Alginate Page 16
- Alginate and plaster mixing bowls Page 16
- Alginate spatula Page 16
- Dispensing gun Page 21
- Intra-oral tips Page 21
- Locking hub for automix machine mixing tips Page 21
- Metal trays Page 21
- Mixing tips Page 21
- Plasters Page 17
- Proclinic Expert A-silicones Page 18, 19 and 20
- Proclinic Expert bite registration silicone Page 17
- Retraction cords Page 21
- Retraction cord instrument Page 21
- Wax bars Page 17
- Wax knife Page 17
- Wax sheets Page 17

Endodontics

- Clamps Page 26
- Rubber dams Page 26
- Endodontic accessories Page 27
- Gates Glidden drills Page 27
- Guttapercha points Page 25
- H-files Page 24

- K-Files Page 24
- Lentulo spirals Page 25
- NiTi files Page 24
- Paper points Page 24
- Peeso reamers Page 27
- Proclinic Expert multi-taper files Pages 22 and 23
- Reamers Page 25
- Root canal preparation cream Page 27
- Rubber dam forceps Page 26
- Rubber dam frames Page 26
- Rubber dam punch Page 26
- Spreaders/Pluggers Page 27

Cements

- Calcium hydroxide Page 33
- Double-ended cement spatula Page 33
- Intra-oral tips Page 33
- Mixing tips, type 11 Page 33
- Proclinic Expert core build up Page 31
- Proclinic Expert dual resin cement Page 30
- Proclinic Expert glass ionomer cement Page 31
- Proclinic Expert MTA Page 29
- Proclinic Expert pure calcium hydroxide paste Page 32
- Proclinic Expert resin modified glass ionomer cement Page 31
- Proclinic Expert root canal sealer Page 28
- Proclinic Expert temporary cement for implants Page 32

- Temporary cement Page 33
- Temporary restorative material Page 33
- Zinc phosphate cement Page 33

Tooth whitening

- Proclinic Expert home whitening kit Page 37
- Proclinic Expert in-office whitening kit Pages 34 and 35
- Proclinic Expert whitening lamp Page 36
- Proclinic Expert whitening pen Page 37

Prosthetics

- Articulating paper Page 40
- Articulating paper forceps Page 40
- Articulating paper, thin Page 40
- Proclinic Expert hard relining material Page 39
- Proclinic Expert soft relining material Page 38
- Reinforcement ribbon Page 40

Posts

- Carbon fibre posts Page 41
- Fibreglass posts Page 41
- Post drills Page 41
- Sterile, white fibreglass posts Page 41
- Sterile, white fibreglass R+ posts Page 41
- Translucent fibreglass posts Page 41

Instruments

- Diagnostic instruments Page 43
- Impression instruments Page 43
- Isolation instruments Page 43
- Miscellaneous Page 43
- Periodontal instruments Page 43
- Restorative instruments Page 43
- Surgical Instruments Page 43

Burs

- Diamond burs for turbine Page 45
- Endo-z burs Page 45
- Metal and crown cutting burs for turbine Page 45
- Tungsten carbide burs for contra-angle Page 45
- Tungsten carbide burs for turbine Page 45

Disposables

- Barrier film and hose sleeves Page 47
- Cotton cellulose rolls Page 47
- Cotton dispensers/waste containers Page 47
- Dispensers Page 47
- Disposable dappen dishes Page 47
- Face masks Page 46
- Gloves Page 46
- Protective visors Page 46
- Saliva ejectors Page 47

Disinfection

- Alcohol-free disinfectant wipes Page 49
- Aspiration system disinfectant and detergent Page 48
- Disinfectant wipes Page 49
- Enzymatic instrument disinfectant and detergent Page 48
- File and bur disinfectant and detergent Page 48
- Instrument disinfectant and detergent Page 48
- Mild soap Page 49
- Sterilisation pouches Page 49
- Sterilisation rolls Page 49
- Surface disinfectant Page 48
- Surface disinfectant and detergent Page 48

Polishers

- Arkansas stone points Page 50
- Brushes and cups for contra-angle Page 50
- Diamond strips Page 51
- Polishers Page 50
- Polishing brushes, golden Page 50
- Polishing discs Page 51
- Polishing strips Page 51
- Stainless steel separating strips Page 51
- Stripping holder Page 51

Sutures and Biomaterials

- Hemostatic sponges Page 53
- Sutures Pages 52 and 53

Needles and Syringes

- 1-ring aspirating syringe Page 54
- 3-ring aspirating syringe Page 54
- Hypodermic needles Page 54
- Self-aspirating syringe Page 54

Orthodontics

- Adjustable face mask Page 61
- Aesthetic bondable eyelets Page 61
- Bite ramp Page 61
- Archwire hooks Page 59
- Bondable buccal tubes Pages 55 and 59
- Brackets Page 58
- Chains Page 61
- Cheek retractor Page 60
- Chin cup Page 61
- Crimpable stops Page 59
- Goshgarian palatal bars Page 61

- Elastic tubing Page 59
- Elastic thread Page 59
- Elastomeric modules Page 61
- Extrusion hook Page 59
- Instruments Page 60
- Intra-oral elastic bands Page 61
- Ligature ties Page 61
- Lingual buttons Pages 59 and 61
- Lip retractor Page 60
- Neet separators Page 59
- Orthodontic wax Page 61
- Proclinc Expert archwires Page 57
- Proclinc Expert buccal tubes Page 55
- Proclinc Expert straight lengths Page 57
- Quad Helix Page 61
- Rotation wedges Page 61
- Spacers Page 61
- SPIN self-ligating button Page 59
- Springs Page 61
- T-hooks for vertical-slot brackets Page 59

Laboratory

- A+B Duplicating silicone Page 63
- Aluminium oxide Page 69
- Base for casting cylinder Page 68
- Bi-pins Page 67
- Casting liner for framework prosthesis Page 63

- Ceramic firing pins Page 69
- Cutting burs Page 71
- Dowel pins Page 67
- Duplicating flask for silicone Page 63
- Expansion fluid for fixed denture linings Page 68
- Finishing and sanitising spray Page 67
- Fixed denture liner Page 68
- Callipers Page 68
- Glass beads Page 69
- Magnet system Page 67
- Metal cutting discs Page 71
- Mixing fluid for framework prosthesis linings Page 63
- Light-cured base plates Page 67
- Occlusion spray Page 69
- PKT modelling instruments Page 64
- Plasters Page 66
- Proclinc Expert A-silicone Page 62
- Proclinc Expert C-silicone Page 62
- Proscan anti-reflective spray Page 69
- Refractory tray Page 69
- Silicone cylinder with base Page 68
- Silicone polishers for acrylic Page 71
- Steel casting cylinder Page 68
- Superflex HP discs Page 71
- Universal base plate Page 67
- Waxes Pages 64 and 65

Restorative materials

PROCLINIC EXPERT NANO HYBRID

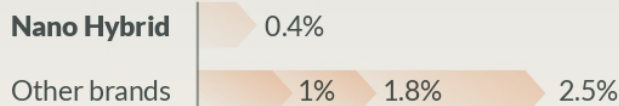
Your ideal anterior/posterior
composite



Thanks to this composite's translucence, it can be used to produce lifelike restorations without layering. Bis-GMA free. Its low shrinkage (2.05%) and high filler load by volume (61%) give long-lasting restorations.

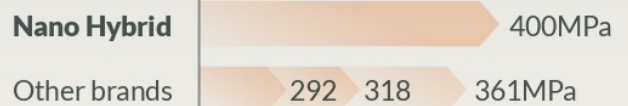
SHADE STABILITY

Change of colour of A2 shade after ageing in transmission mode*



COMPRESSIVE STRENGTH

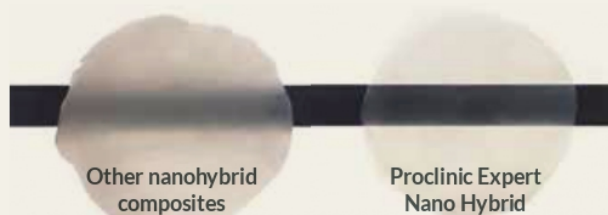
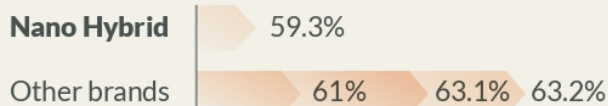
Strength*



* Results of tests conducted by the manufacturer compared to the three best-selling products on the Spanish market.

TRANSLUCENCY

Opacity*

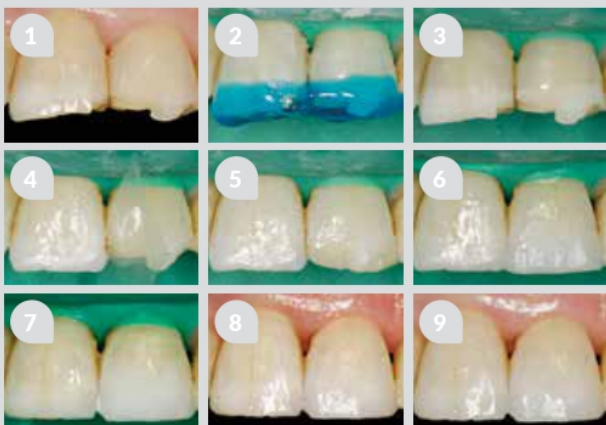


Dr Alexander Johansson
ZahnCity GmbH,
Zurich, Switzerland.
www.zahncity.ch

"Proclinic Expert Nano Hybrid composite has ideal viscosity and is easily moulded and sculpted. It is very flexible, wear-resistant and has excellent physical strength."



CLINICAL CASE STUDY**



- 1 The patient visited the surgery with fractures to teeth 11 and 21 that had occurred a long time before. The teeth needed to be repaired quickly and cheaply. Control X-rays and vitality tests were performed on tooth 21. A gingivectomy was recommended for this tooth to improve proportions and simulate the vertical fissure, but the patient was not interested.
- 2 After preparation, the tooth was etched for 20 seconds with Proclinc Etching Gel.
- 3 Results of etching with Proclinc Etching Gel.
- 4 A transparent acetate band was put into place and Proclinc Expert Total Etch Adhesive applied for 20 seconds to teeth 11 and 21. Proclinc Expert Nano Hybrid Composite Incisal was then applied to tooth 11.
- 5/6 A layer of Proclinc Expert Nano Hybrid Composite A3 was applied and covered with an incisal shade.
- 7 Initial polishing of restorations with the rubber dam still in place.
- 8 Final high-gloss polishing with rubber cups and finishing paste.
- 9 Final result.



Dr Lotte Hallander
 TandCity ApS, Copenhagen,
 Denmark.
www.tandcity.dk
 "Proclinc Expert Nano Hybrid
 is very easy to use and apply,
 while the nano effect provides
 excellent shade matching. I truly
 recommend this product."



Proclinc Expert Nano Hybrid composite, syringe (4g)

Kit*	Ref. 36587	Shade B3	Ref. 36620
Shade A1	Ref. 36588	Shade C2	Ref. 36594
Shade A2	Ref. 36589	Shade C3	Ref. 36621
Shade A3	Ref. 36590	Shade D3	Ref. 36622
Shade A3.5	Ref. 36591	Bleach	Ref. 36595
Shade A4	Ref. 36592	Incisal	Ref. 36596
Shade B2	Ref. 36593	OA3	Ref. 36597

*Kit contents: 5 x 4g syringes (A1, A2, A3, A3.5, B2), 1 x 5ml total etch adhesive, 2 x 2ml syringes of blue etching gel, 40 micro-applicators + Vita shade guide.



Proclinc Expert Nano Hybrid composite, compules (20 x 0.25g)

Shade A1	Ref. 36580	Shade B2	Ref. 36584
Shade A2	Ref. 36581	Shade C2	Ref. 36585
Shade A3	Ref. 36582	Incisal	Ref. 36586
Shade A3.5	Ref. 36583		

**Clinical case studies carried out by Dr Carlos Gargallo Gallego.

Restorative materials



PROCLINIC EXPERT BULK FILL

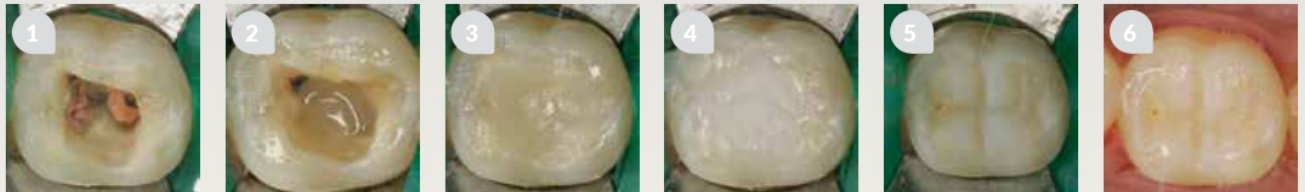
The fastest
restoration



Proclinic Expert Bulk Fill is a light-cured, radiopaque posterior composite capable of treating a maximum thickness of 5mm in 20 seconds.

6

CLINICAL CASE STUDY**



Dr Carlos Gargallo Gallego
Clínica Dental Carlos Gargallo
Dental council registration
No.: 3947.

“Proclinic Expert Bulk Fill has very satisfactory properties. It is surprisingly easy to handle and condense into the cavity. It can also be applied directly into the cavity as it has excellent polishing and shade-matching characteristics. We always recommend using Proclinic Expert Bulk Fill in conjunction with Proclinic Expert Nano Flow at the bottom of the cavity.”

- 1 Tooth 36 following endodontic preparation. After rinsing, apply Proclinic Expert Total Etch Adhesive to immediately seal the cavity.
- 2 Application of Proclinic Expert Nano Flow Composite A3.5 as a liner. Thanks to its perfect flowability, this material exhibits ideal behaviour and stays where it is applied.
- 3 Fill the cavity with the new Proclinic Expert Bulk Fill Composite in two 2–3mm increments and light cure each increment for 20 seconds. The material is easily condensed using conventional techniques.
- 4 Application of Nano Hybrid Composite Incisal in a single final layer to match enamel shading and ensure the restoration does not appear monochromatic.
- 5 Polishing and shaping of the tooth's occlusal anatomy with fine grit turbine burs.
- 6 Occlusal adjustment, polishing and finishing of the restoration in the mouth using contra-angle burs at low speeds.

5mm increments can be light-cured in 20 seconds.

Does not stick to instruments when they are removed.

→ Good viscosity, condenses well in posterior restorations.

→ Thanks to its firmness it can be condensed to create better contact points.

Proclinic Expert Bulk Fill Composite, syringe (4g)

Universal

Ref. 36618

Excellent ratings in clinical tests



Proclinic Expert Bulk Fill

++++ 1/2

THE DENTAL ADVISOR
www.dentaladvisor.com

RATINGS:
Excellent +++++
Very Good ++++
Good +++

345
CLINICAL
APPLICATIONS



91%

SATISFACTION

78%
of consultants consider
Proclinic Expert Bulk Fill
**TO BE AS GOOD AS
OR BETTER**
than other brands



Restorative materials

PROCLINIC EXPERT NANO FLOW

Your most versatile
composite

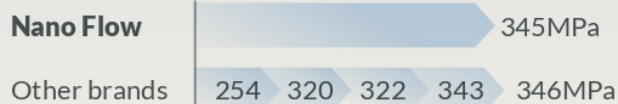


Proclinic Expert Nano Flow is indicated for almost all types of restorations. It is radiopaque and guarantees natural-looking teeth. It contains nanofillers that improve polishing properties, wear resistance and compressive strength and UDMA resins that reduce viscosity and minimise post-operative sensitivity.

COMPRESSIVE STRENGTH

The high compressive strength of **Proclinic Expert Nano Flow** broadens its range of application possibilities.

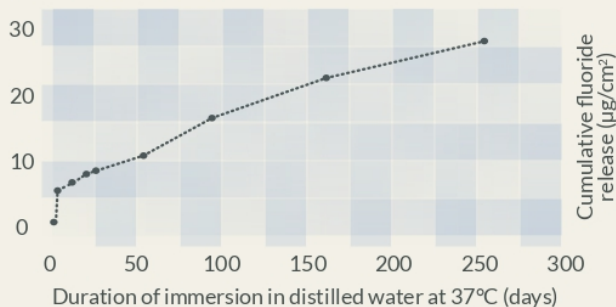
MPa at 1 hour*



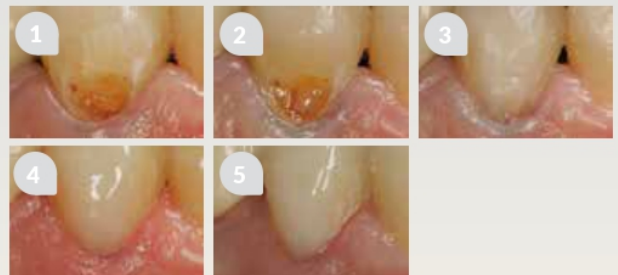
FILLER LOAD

The high filler load of **Proclinic Expert Nano Flow** (64% by weight) gives it excellent wear resistance.

FLUORIDE RELEASE



CLINICAL CASE STUDY**



- 1/2 The patient visited the surgery with class V caries in tooth 44. After caries removal and retraction cord placement, etching was carried out with Proclinic Etching Gel and Proclinic Expert Total Etch Adhesive was then applied.
- 3 Application of Proclinic Expert Nano Flow Composite A3.5. Proclinic Expert Nano Hybrid Composite A3.5 was then applied and the restoration finished with Proclinic Expert Nano Hybrid Composite Incisal.
- 4 The retraction cord was removed and the tooth polished with fine grit diamond burs and rubber cups at low speeds.
- 5 Immediate final result.

Proclinic Expert Nano Flow Composite, syringe (2 x 1g)

Shade A1	36602	Shade A3.5	36605	Bleach	36625
Shade A2	36603	Shade B2	36623	Universal opaque	36607
Shade A3	36604	Shade C2	36624		

PROCLINIC EXPERT MICRO HYBRID



A light-cured, radiopaque, microhybrid composite for anterior/posterior restorations. It does not stick to instruments and has low shrinkage; is easy to apply and provides outstanding clinical results.



Proclinic Expert Micro Hybrid Composite, syringe (4g)

Kit ¹	Ref. 36608	Shade B2	Ref. 36613
Shade A1	Ref. 36609	Shade C2	Ref. 36614
Shade A2	Ref. 36610	Bleach	Ref. 36616
Shade A3	Ref. 36611	Incisal	Ref. 36617
Shade A3.5	Ref. 36612	Universal opaque	Ref. 36615

¹Kit contains: 5 x 4g syringes (A1, A2, A3, A3.5, B2), 1 x 5ml total etch adhesive, 2 x 2ml syringes of etching gel, 40 micro-applicators + Vita shade guide.

**Clinical case studies carried out by Dr Carlos Gargallo Gallego.



ETCHING
GEL
JUMBO
ACID
PAGE 12

TRANSPARENT
WEDGES
PAGE 12

MATRICES
PAGE 12

Restorative materials

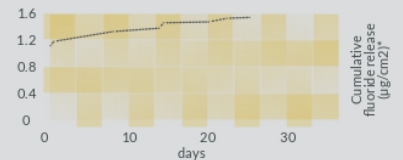


PROCLINIC EXPERT SELF-ETCH ADHESIVE

Seventh-generation adhesive. The colour changes as it cures (from dark yellow to clear), indicating when to proceed with the next step. HEMA free, preventing any possible skin irritations. Bis-GMA free.

1 unit Ref. 36600

FLUORIDE RELEASE



* Results of tests conducted by the manufacturer compared to the three best-selling products on the Spanish market.



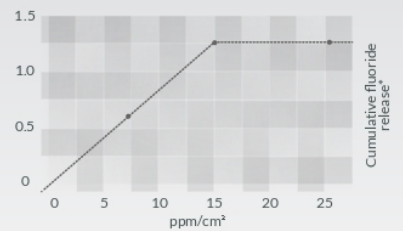
PROCLINIC EXPERT TOTAL ETCH ADHESIVE

Single-component, fifth-generation total etch adhesive for enamel and dentine. Very high bond strength thanks to complete hybridisation of dentine.

The well-infiltrated hybrid layer fully seals the dentinal tubules, minimising post-operative sensitivity. Bis-GMA free, eliminating any unwanted hormonal effects these may cause.

1 unit Ref. 36599

FLUORIDE RELEASE



10

MONOCOMPONENT ADHESIVE

Single component adhesive which is light curable for traditional impression technique with etching gel. Excellent adherence to enamel and dentin, especially indicated for application on wet and dry dentin. No volatile disolvents, it doesn't evaporate.

5ml

Ref. 7839

2 x 5ml

Ref. 78399



PVC MIXING PADS

PVC mixing pads. With non-slip base.

7 x 8cm (100 units)

Ref. 49948

14 x 20cm (50 units)

Ref. 49949

MICRO-APPLICATORS

Lint free. Dispenser with 100 units.

Fine micro-applicator

Ref. 49978

Regular micro-applicator

Ref. 49979

UNIVERSAL ADHESIVE

The Proclinic Expert Universal Adhesive is compatible with all adhesive techniques and cavitary preparations. High adhesive strength to enamel and dentin and extreme stress resistance.

More information: www.proclinic-products.com

NEW
PRODUCT



Universal Adhesive
Ref. 78564 - 5ml

 **proclinic**
EXPERT

Restorative materials



■ ETCHING GEL

Highly visible, coloured phosphoric acid. Thixotropic and medium viscosity for easy application. Comes with 12 curved tips for greater accuracy.

1 x 12g syringe, blue
3 x 3.5g syringes, green

Ref. 0110
Ref. 0179

■ JUMBO ACID

Excellent thixotropy. Flows quickly. Highly visible thanks to its green colour.

47g gel syringe + 2 full 3.5g syringes with cap
+ 24 transparent green tips + connector for syringes

Ref. 01583

12



■ TRANSPARENT WEDGES

The light-conducting surface assures complete curing of the restoration.

Box of 200 units

Ref. 79937

■ MATRIX

Metal matrix strips, used to achieve tight contact points and ensure a perfect restoration. Thickness: 0.05mm. Length: 3m. Widths available: 5mm, 6mm and 7mm.

5mm wide
6mm wide
7mm wide

Ref. 0196
Ref. 0197
Ref. 0198

■ FINE MATRIX STRIPS

Thickness: 0.03mm Length: 3m

5mm wide
6mm wide
7mm wide

Ref. 65870
Ref. 65871
Ref. 65872



NEW
PRODUCT

PROCLINIC EXPERT LED CURING LIGHT II

Renewed power
and effectiveness

Light intensity:
1200-1500mW/cm²

Wavelength:
440-480nm

Proclinic Expert Led Curing Light

White

Ref. 37021

Stainless steel right-angled head
for easy access to confined areas

- 2-year guarantee.
- Automatic compensation circuit for a continuous power output.
- 4 pre-set times: 5, 10, 15 and 20 seconds.
- 3 curing modes: fast, ramp and pulse.

TECHNICAL FEATURES

Fully-charged, it can deliver over 200 ten-second cycles.

Dimensions:
25.5 x 2.7cm
(length x diameter)

Weight: 185g.

High-performance LED light source: 5W

Built-in intensity indicator

With protective light shield



PROCLINIC EXPERT RADIOMETER



1 u.

Ref. 37003

Restorative materials

NEW
PRODUCT

PROCLINIC EXPERT CERAMIC PRIMER



First single-component primer for the preparation of all types of ceramic surfaces and zirconium restorations. No micro-blasting or any additional preparation required.

INDICATIONS

- Preparation of ceramic crowns, veneers and inlays prior to cementation*.
- Preparation of fractured ceramic for subsequent repair with resins.



* Can be used in combination with our Proclinic Expert dual resin cement.

EXCELLENT WETTABILITY AND LOW VISCOSITY

which promote ideal coverage
of the surface.

PREPARATION STEPS

1
Prepare
the surface

2
Apply and allow to
react for 60"

3
Apply air to
the excess material



Best stored refrigerated at a temperature below 24 °C.

Proclinic Expert ceramic primer

One 5ml bottle

Ref. 78579

PROCLINIC EXPERT HYDROFLUORIC ACID



Viscous and buffered, 9% hydrofluoric acid gel for etching all types of porcelain.

INDICATIONS

- Preparation of ceramic crowns, veneers and inlays prior to sealing.
- Preparation for cementation or reconstruction of fractured ceramic or metal-ceramic pieces.

Proclinic Expert hydrofluoric acid

2 x 1.2ml syringes +
4 applicator tips

Ref. 78577

**MICROSCOPIC
POROUS
SURFACE**
enhances mechanical
adhesion

- Supplied in a syringe for excellent control and ease of application.
- For extraoral and intraoral use, when correctly isolated.

SILANE

Improve the adhesion and durability values of your restorations with Proclinic Expert silane.

2 empty 1.2ml syringes, 2 x 2ml bottles, 4 tips

Ref. 78578



PROCLINIC EXPERT GLASS IONOMER POSTERIOR RESTORATIVE CEMENT

Self-curing glass ionomer restorative cement, ideal for posterior teeth restorations. Easy to work and set consistency. High compressive strength.

15g powder + 7ml liquid

Ref. 35220



PROCLINIC EXPERT LC GLASS IONOMER RESTORATIVE CEMENT

Dual-cured, light-cured or self-curing, resin-modified glass ionomer restorative cement. HEMA-free.

15g powder + 7ml liquid

Ref. 35221

Impression



16

■ ALGINATE, REGULAR SET

Mint aroma, orange. Regular set, total curing time 2'40".
Gluten-free.

906g bag with measuring cup

Ref. 0161

453g bag

Ref. 0162

■ NEW ALGINATE

Mint aroma, pink. Fast set, total curing time 2'00". Dust-free, lead-free and easy to mix.

453g bag

Ref. 01592

■ CHROMATIC ALGINATE

Vanilla aroma. Visual time guide, from violet to white.
Regular set, total curing time 3'30".

453g bag

Ref. 0178

■ FAST ORTHODONTIC ALGINATE

Citrus aroma, orange. Fast set, total curing time 2'00".
Dust-free, lead-free and easy to mix.

453g bag

Ref. 01593



■ MIXING BOWLS

1 unit.

Blue. 6cm high

Ref. 25658

Green. 9cm high

Ref. 0111

■ ALGINATE SPATULA

Mixing spatula for alginate and plaster.
Stainless steel, curved blade. Plastic handle.

White

Ref. 8059

PROCLINIC EXPERT BITE REGISTRATION SILICONE



Proclinic Expert Bite Registration Silicone has a Shore A hardness of 95 which ensures excellent detail reproduction.

2 x 50ml cartridges + 12 tips

Ref. 15160



Visit www.proclinic-products.com to view our complete range of plasters.



WAX SHEETS

Pink modelling wax 450g	Ref. 0176
Pink modelling wax. For warmer climates 450g	Ref. 01762
Pink modelling wax. 2500g	Ref. H20812
Pink modelling wax. For warmer climates 2500g	Ref. H20802

WAX BARS

Yellow articulation wax 500g	Ref. H20814
Green articulation wax 500g	Ref. H20810



WAX KNIFE
Ref. 8016

HARD PLASTER, TYPE IV

For fabricating fixed/removable dentures and frameworks. Excellent casting. High abrasion resistance.

Pink. 4kg tub	Ref. 0160
Gold. 6kg tub	Ref. 01149
Pink. 25kg box	Ref. H62010

HARD PLASTER, TYPE III

For fabricating removable dentures. 25kg box.

Yellow	Ref. H62011
Blue	Ref. H62012
Pink	Ref. H62013

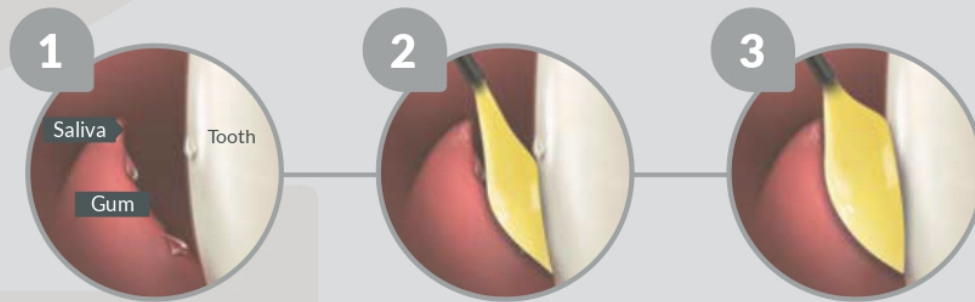
HARD ORTHODONTIC PLASTER, TYPE III

For creating orthodontic study models. Smooth surface. High strength. Extra white colour.

4kg tub	Ref. 0159
25kg box	Ref. 0199

Impression

PROCLINIC EXPERT SILICONES ALLOW RAPID, STRAIGHTFORWARD IMPRESSION-TAKING



Correctly modulated times and different viscosities suited to every clinical need. Excellent detail reproduction even in a moist environment. Highly hydrophilic, minimising the risk of pores. Ensures highly accurate impressions thanks to the outstanding properties of Proclinic Expert silicones.

*Times at 23°C	Ultra Light Body	Light Body	Light Body	Regular Body	380 Heavy Body	380 Heavy Body	380 Putty Soft	Putty Soft	Putty Soft	Putty Hard
	Fast Set	Regular Set	Fast Set	Regular Set	Regular Set	Fast Set	Fast Set	Regular Set	Fast Set	Fast Set
Reorder	15156	15153	15154	15152	15158	15159	15157	15150	15151	15163
ISO4823	Type 3	Type 3	Type 3	Type 2	Type 1	Type 1	Type 0	Type 0	Type 0	Type 0
ADA 19	Light-bodied Consistency	Light-bodied Consistency	Light-bodied Consistency	Medium-bodied Consistency	Heavy-bodied Consistency	Heavy-bodied Consistency	Putty Consistency	Putty Consistency	Putty Consistency	Putty Consistency
Mixing ratio	1:1	1:1	1:1	1:1	5:1	5:1	5:1	1:1	1:1	1:1
System										
Total working time	1'30"	2'	1'30"	2'	2'	1'30"	1'30"	2'	1'30"	1'30"
Minimum time in mouth	2'30"	3'30"	2'30"	3'30"	3'30"	2'30"	2'30"	3'30"	2'30"	2'30"
Setting time*	4'	5'30"	4'	5'30"	5'30"	4'	4'	5'30"	4'	4'
Suggested techniques	2-step	1-step or 2-step	1-step or 2-step	1-step or one-phase	1-step or 2-step	1-step or 2-step	1-step or 2-step	1-step or 2-step	1-step or 2-step	1-step or 2-step
	LOW CONSISTENCY						HIGH CONSISTENCY			

Complete your range of silicones with Proclinic Expert Bite Registration Silicone; its Shore A hardness of 95 (15160) guarantees excellent detail reproduction.

PROCLINIC EXPERT A-SILICONES



Proclinic Expert silicones guarantee maximum precision and quality. Their nanotechnology and hydrophilic properties combine to provide detailed impressions, guaranteed dimensional accuracy and total margin integrity.

REGULAR A-SILICONE (MEDIUM BODY)

Proclinic Expert A-Silicone, Medium Body, Regular Set. 2x 50ml cartridges + 12 tips Ref. 15152

A-SILICONE PUTTY

Proclinic Expert A-silicone putties have a new formula. 250ml base + 250ml catalyst.

Proclinic Expert A-Silicone Putty, Soft, Regular Set	Ref. 15150
Proclinic Expert A-Silicone Putty, Soft, Fast Set	Ref. 15151
Proclinic Expert A-Silicone Putty, Hard, Fast Set	Ref. 15163

LIGHT BODY A-SILICONE

Proclinic Expert A-Silicone, Light Body, Regular Set. 2 x 50ml cartridges + 12 tips + 12 intraoral tips	Ref. 15153
Proclinic Expert A-Silicone, Light Body, Fast Set. 2 x 50ml cartridges + 12 tips + 12 intraoral tips	Ref. 15154
Proclinic Expert A-Silicone, Ultra Light Body, Fast Set. 2 x 50ml cartridges + 12 tips + 12 intraoral tips	Ref. 15156
Proclinic Expert A-Silicone, Light Body, Fast Set. 4 x 50ml cartridges	Ref. 15155

A-SILICONE, 380ML

Proclinic Expert auto-mix A-silicones ensure a homogeneous mix and greater convenience. Compatible with the leading auto-mixing machines on the market. 2 x 380ml + 15 mixing tips + 2 locking mechanisms.

Proclinic Expert A-Silicone 380, Putty Soft, Fast Set	Ref. 15157
Proclinic Expert A-Silicone 380, Heavy Body, Regular Set	Ref. 15158
Proclinic Expert A-Silicone 380, Heavy Body, Fast Set	Ref. 15159

Impression

PROCLINIC EXPERT SILICONES ACHIEVE OUTSTANDING RATINGS IN CLINICAL TESTS



Dr Eduardo González Arroyo
Clínica Fernández
www.oralsturgerytube.com
Dental council registration
No. 28007247
"These new silicones are
even better quality than
the previous generation of
Proclinic silicones that I always
used to use."



Dr Alexander Johansson
ZahnCity GmbH,
Zurich, Switzerland.
www.zahncity.ch
"I had never tried an ultra-
light silicone before and I have
discovered that Proclinic Expert
Ultra Light Body silicone is better
than the Light Body silicone
I usually use."

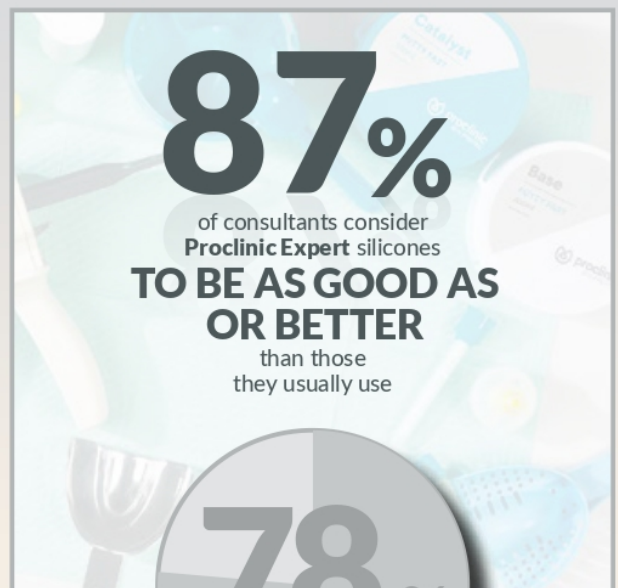


**Proclinic Expert VPS
Impression Material**
++++ 1/2

THE DENTAL ADVISOR
www.dentaladvisor.com

RATINGS:
Excellent +++++
Very Good ++++
Good +++

20





■ MIXING TIPS

48 units

Ref. 0113

■ INTRA-ORAL TIPS

100 units

Ref. 0124

■ LOCKING HUB FOR AUTOMIX MACHINE MIXING TIPS

2 units

Ref. 15161



■ DISPENSING GUN

1 unit

Ref. 0156



■ RETRACTION CORD

Easy to place, non-impregnated, 100% cotton cord for rapid retraction. Dispenser with 254cm.

No. 000 - Anterior teeth	Ref. 78287
No. 00 - Friable tissues	Ref. 78288
No. 0 - Class III, IV and V restorations	Ref. 78289
No. 1 - Tissue control	Ref. 78290



■ BRAIDED RETRACTION CORD

Non-impregnated braided retraction cord gives better impression results by increasing the width of the gingival sulcus. Dispenser with 225 cm.

No. 0 - Extra-fine	Ref. 49965
No. 1 - Fine	Ref. 49966
No. 2 - Medium	Ref. 49967

■ METAL TRAYS

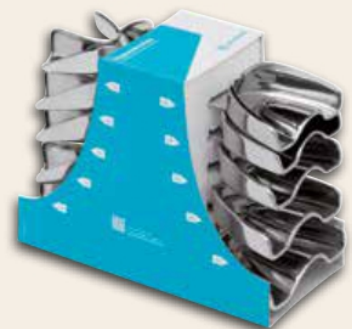
Impression trays with retention ridge.

10-piece set. Smooth	Ref. 7901
10-piece set. Perforated	Ref. 7980

■ REPLACEMENT TRAYS

Upper	Smooth	Perforated	Lower	Smooth	Perforated
	Ref.	Ref.		Ref.	Ref.
U1	59742	59983	L1	59727	59982
U2	59743	59737	L2	59728	59732
U3	59744	59738	L3	59729	59733
U4	59745	59739	L4	59730	59734
U5	59746	59740	L5	59731	59735
U6	-	59946	L6	-	59736

Consult our range of impression trays for edentulous patients



RETRACTION CORD INSTRUMENT

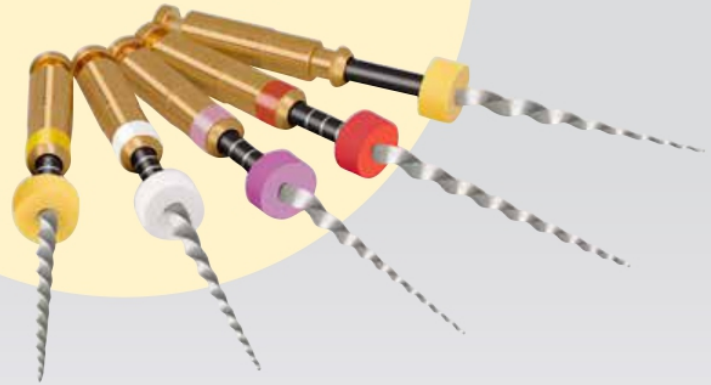
Ref. 80425

Endodontics

NEW
PRODUCT

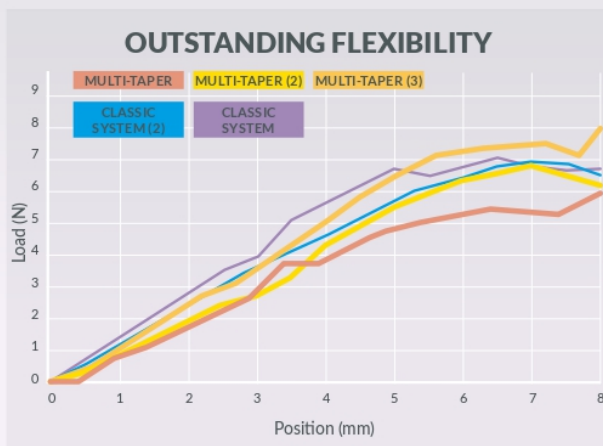
PROCLINIC EXPERT MULTI-TAPER FILES

The same flexibility and safety
in your hands as always



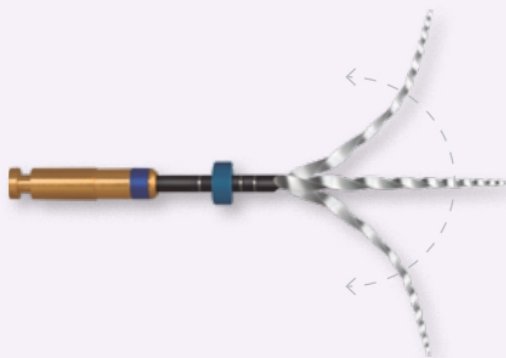
Proclinic Expert multi-taper files offer high performance in endodontics thanks to their high resistance, effectiveness and small handles to facilitate access to molars.

22

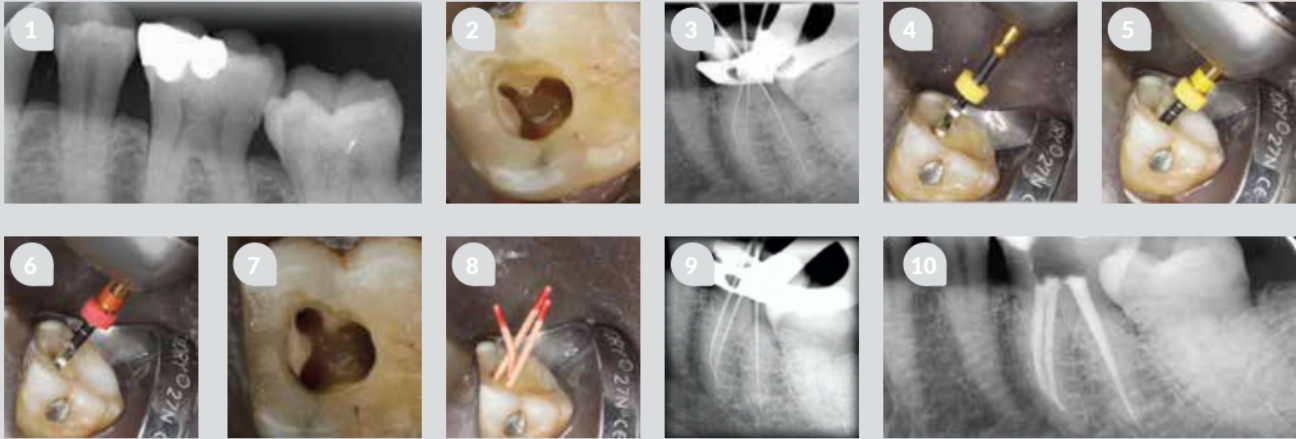


■ Safe and accurate
root canal reconstruction.

■ Non-cutting blunt tip,
which minimises deviations in
the canal.



■ Rotary file with improved
flexibility, which is crucial in
finishing files as it increases the
level of safety.



- 1 Initial X-ray of a 36-year-old patient about to undergo endodontic treatment to address irreversible pulpitis.
- 2 The principal root canal entrances could be identified after making an opening from the crown down to the floor of the pulp chamber. The floor of the pulp chamber is visible in the background.
- 3 Conductometry taken from a mesial perspective to determine the working length of the root canals.
- 4 The root canal entrance was widened with an SX file to improve access.
- 5 No. 20 F1 finishing file up to working length.
- 6 Finishing with F2 finishing file, from No. 25 up to working length.
- 7 Photo of the floor of the pulp chamber showing the three root canals after preparation.
- 8 Guttapercha points located in each of the prepared canals.
- 9 Conometry X-ray taken from a mesial-radial perspective.
- 10 Final X-ray of the root canal obturation.



■ Sterile blisters. Significant time savings, as no prior sterilisation is required.



Dr Hipólito Fabra Campos
 Doctor of Medicine and Surgery. Stomatologist.
 Private endodontics practice at Clínica Fabra.

“After performing several endodontic treatments with Proclinic I cannot hardly notice any difference compared to other systems.
 It is a straightforward procedure, it feels smooth and the cut is efficient, providing a perfect result.”

**Clinical case study conducted at Clínica Fabra.

Description	Ref. 19mm	Ref. 21mm	Ref. 25mm	Ref. 31mm
Starter Kit*		63980	63981	63982
SX	63983			
S1		63984	63985	63986
S2		63987	63988	63989
F1		63990	63991	63992
F2		63993	63994	63995
F3		63996	63997	63998

Each blister contains 5 units
 * Assorted Starter Kit, 5 units: SX-S1-S2- F1-F2

Endodontics



K-FILES

Used to widen root canals before filling. Made of stainless steel. Box of 6 units.

No.	Ref.	Ref.	Ref.	No.	Ref.	Ref.	Ref.
	21mm	25mm	31mm		21mm	25mm	31mm
06	49907	49909		40	8140	8127	81037
08	49908	49910	81030	45	8141	8128	81038
10	8134	8121	81031	50	8142	8129	81039
15	8135	8122	81032		8143	8130	81040
20	8136	8123	81033		8144	8131	81041
	8137	8124	81034		8145	8132	81042
	8138	8125	81035	80	8146	8133	81043
	8139	8126	81036	Nos. 15-40 set	8162	8161	81044

NITI FILES

Made of nickel titanium for greater flexibility and shape memory. Box of 6 units.

No.	Ref.	Ref.	No.	Ref.	Ref.
	21mm	25mm		21mm	25mm
15	7701	7713	45	7707	7719
20	7702	7714	50	7708	7720
	7703	7715		7709	7721
	7704	7716		7710	7722
	7705	7717		7711	7723
40	7706	7718	80	7712	7724

H (HEDSTROEM) FILES

Their spiral shape is excellent for cleaning root canals before filling. Made of stainless steel. Box of 6 units.

No.	Ref.	Ref.	No.	Ref.	Ref.
	21mm	25mm		21mm	25mm
08	49911	49912	45	77268	8155
10	77261	8148	50	77269	8156
15	77262	8149		77270	8157
20	77263	8150		77271	8158
	77264	8151		77272	8159
	77265	8152	80	77273	8160
	77266	8153	Nos 15-40 set	77274	8163
40	77267	8154			

24



MULTI-TAPER PAPER POINTS, VARIABLE TAPER

Paper points for optimal drying of canals prepared with instruments of different taper. Box of 100 units.

No.	Ref.
F1	01584
	01585
	01586
Assortment F1-F2-F3	01587
Assortment F4-F5	01588

PAPER POINTS, ISO COLOUR-CODED

ISO colour-coded points for easy, accurate identification. Box of 200 units.

No.	Ref.	No.	Ref.
15	8184	45	8190
20	8185	50	8191
	8186		8192
	8187		8193
	8188		8194
40	8189	80	8195

PAPER POINTS, .04 AND .06 TAPER

Fit instruments with the same taper. Box of 100 units.

No.	Ref.	Ref.	No.	Ref.	Ref.
	.04 taper	.06 taper		.04 taper	.06 taper
15	81800	81807		81804	81811
20	81801	81808	40	81805	81812
	81802	81809	Nos. 15-40 set	81806	81813
	81803	81810			



GUTTAPERCHA POINTS, ISO COLOUR-CODED

ISO colour-coded points for easy, accurate identification. Box of 120 units (6 tubes x 20 units).

No.	Ref.	No.	Ref.	No.	Ref.	No.	Ref.
15	8101	20	8102	45	8107	70	8111
20	8102	35	8105	50	8108	80	8112
35	8103	40	8106	60	8109		

GUTTAPERCHA POINTS, .04 AND .06 TAPER

Fit instruments with the same taper so the root canal can be filled with just a single guttapercha point. Box of 60 units.

No.	Ref.	Ref.	No.	Ref.	Ref.	No.	Ref.	Ref.
15	81782	81792	45	81785	81795	45	81788	
20	81783	81793	35	81786	81796	Nos. 15-40 set		81781 81791
35	81784	81794	40	81787	81797	Nos. 45-90 set		81789

NON-STANDARDISED GUTTAPERCHA POINTS

Designed for filling root canals. Box of 100 units.

XX-fine	Ref. 8196	X-fine (A)	Ref. 8197	Fine (B)	Ref. 8198	Medium (C)	Ref. 8199
---------	-----------	------------	-----------	----------	-----------	------------	-----------

MULTI-TAPER GUTTAPERCHA POINTS, VARIABLE TAPER

Guttapercha points for filling canals prepared with variable and progressive taper instruments. Radiopaque and meet ISO standards. Box of 60 units.

No.	Ref.
F1	01589
	01590
	01591
Assortment F1-F2-F3	01594
Assortment F4-F5	01595



LENTULO SPIRAL FILLERS

Designed to place filling pastes in the root canal without forming air bubbles. Made of stainless steel. Box of 4 units.

No.	Ref.	No.	Ref.
25mm	8180	25mm	8182
40	8181	40	8183



REAMERS

Used to widen root canals. Made of stainless steel. Box of 6 units.

No.	Ref.	Ref.	No.	Ref.	Ref.
06	49913	49915	40	77281	8171
08	49914	49916	45	77282	8172
10	77275	8165	50	77283	8173
15	77276	8166	60	77284	8174
20	77277	8167	70	77285	8175
30	77278	8168	80	77286	8176
40	77279	8169	90	77287	8177
50	77280	8170	Nos. 15-40/7288		8164

SPREADERS

For lateral and vertical condensation of guttapercha. Made of stainless steel. Box of 6 units.

Pointed	Ref.	Flat tip	Ref.
No.	25mm	No.	25mm
15	7731	20	7737
20	7732	30	7738
30	7733	40	7739
40	7734	50	7740
50	7735		
60	7736		
Nos. 15-40 set			7730

Endodontics



RUBBER DAM

Pre-cut, powder-free and tear-resistant (24MPa) dental dams. Less than 50 µg/dm³ of protein and less than 2mg of residual powder per dam.

Box of 36 units. Dimensions: 15 x 15cm.

Medium, Green	Ref. 0125
Medium, Blue	Ref. 12500
Fine, Green	Ref. 12501
Thick, Green	Ref. 12502

Box of 52 units. Dimensions: 12.7 x 12.7cm

Medium Dams, Green	Ref. 12503
--------------------	------------

NEW PRODUCT

CLAMPS

Made of high-grade stainless steel. Available in a variety of shapes to fit different tooth sizes and with excellent elasticity. 1 unit.

Winged

No.	Ref.	N°	Ref.
212	59962	2A	59970
00	59963	4	59971
1	59964	7	59972
12A	59965	8	59973
13A	59966	8A	59974
14	59967	9	59975
14A	59968	26N	4996
2	59969	27N	59981

Wingless

No.	Ref.	N°	Ref.
W14	59976	W8	59979
W2	59977	W8A	59980
W7	59978		



RUBBER DAM
PUNCH
Ref. 59927

RUBBER DAM
FORCEPS
Ref. 59811

RUBBER DAM
FRAME
Ref. 59887



ROOT CANAL PREPARATION CREAM

EDTA (ethylenediaminetetraacetic acid). Helps widen root canals, dissolve pulp tissue and remove the smear layer. Its lubricating effect also makes the use of files easier. Use to remove pathological mineral content (pulpitis, calcifications, etc.) and it is easy to remove due to being highly soluble in water. Antibacterial action.

4 x 1.5g syringes + 6 tips

Ref. 49933



PEESO REAMERS

Reamers used for widening root canal walls. 32mm long. Box of 6 units.

No.	Ref.	No.	Ref.
1	81019	4	81022
2	81020	5	81023
3	81021	6	81024



GATES GLIDDEN DRILLS

Drills used to widen the canal entrance, thus improving access for manual and mechanical instruments. 32mm long. Box of 6 units.

No.	Ref.	No.	Ref.
1	8113	4	8116
2	8114	5	8117
3	8115	6	8118



SPONGES

1cm thick (25 units)	Ref. 49954
0.5cm thick (50 units)	Ref. 49955

ENDO STOPS

Autoclavable at 134°C. blue.

100 units	Ref. 79938
-----------	------------

SPONGE HOLDERS

Made of autoclavable plastic. 1 unit.

Green	Ref. 49952
Blue	Ref. 49953

ENDODONTIC BOX

Box for 16 endodontic instruments, with ruler.

Endo box. With 25 sponges	Ref. 49956
45 x 4.5cm sponges (25 units)	Ref. 49957

Cements



PROCLINIC EXPERT ROOT CANAL SEALER

Eugenol free



Radiopaque cement formulated especially for permanent root canal fillings in combination with guttapercha points. Comprising a two-component epoxy/amine resin paste that incorporates insoluble, antibacterial, disinfectant macromolecules.

28



1
The sealer is easily placed in the root canal using either a cone or lentulo spiral filler. Its optimal viscosity allows it to fill all branches off the main root canal.

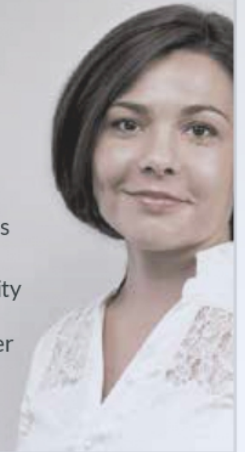


2
The X-ray shows there are no diseased hotspots and the bone has been completely repaired (points of infection have been filled with tissue, which, given its density, must be bone).

Dr Chepinskaya
Smile Plus Clinic, Kiev.

"I used a well-known epoxy resin sealer for guttapercha techniques for a long time. A few years ago I decided to try some newer materials, such as Proclinic Expert Root Canal Sealer, which contains antibacterial particles.

Its relatively high viscosity and wettability means it adheres to canal walls magnificently and there is a minimal layer between guttapercha cones."



Proclinic Expert Root Canal Sealer

1 x 10g syringe + 10 mixing tips
+ 10 Intraoral tips + 1 mixing pad

Ref. 78550



PROCLINIC EXPERT
ROOT CANAL
SEALER

In tubes.



PROCLINIC EXPERT MTA

Bioceramic



Proclinic Expert MTA
1g (1g powder + 3ml distilled water) Ref. 78551

White, radiopaque, bioceramic endodontic repair cement containing Mineral Trioxide Aggregate (MTA)-based mineral oxides and featuring unique properties.

INDICATIONS

1

- Direct pulp capping
- Pulpotomy



Initial X-ray



60 days later

2

- Root perforations (canals and furcations)
- Root perforations due to internal root resorption



Initial X-ray



3 years later

3


- Apexification / Apexogenesis
- Retrograde filling



Initial X-ray



18 months later



Proclinic Expert MTA
+ + + + 1/2

THE DENTAL ADVISOR
www.dentaladvisor.com

RATINGS:
Excellent + + + + +
Very Good + + + +
Good + + + +

201

tests
in clinical
applications

91%

satisfaction

85%

of consultants
consider it
**TO BE AS GOOD
AS OR BETTER**
than other
brands

KEY FEATURES

Container						
Easy to mix						
Working time						
Retention						

Poor Satisfactory Good Very good Excellent

CONSULTANTS WHO WOULD:

Change to
Proclinic Expert MTA 81%

Recommend
Proclinic Expert MTA 88%

Cements

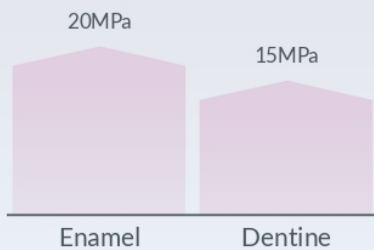
PROCLINIC EXPERT DUAL RESIN CEMENT Eugenol free



Permanent self-etch, self-adhesive, dual-cure resin cement.
More aesthetic results thanks to the two shades, dentine and enamel, which are used
to match the cement shade to the tooth and inlay.

30

BOND STRENGTH



SHADE STABILITY

Proclinic Expert
Dual Resin Cement
after curing



Proclinic Expert
Dual Resin Cement
stored in the
dark and dried at
37±2°C for 7 days

■ 250%
Al radiopacity

■ Fluoride-releasing,
minimises the risk of
recurrent cavities

■ Taste- and odour-
free for increased
patient comfort
during treatment

Proclinic Expert Dual Resin Cement: 1 x 8g syringe;
10 mixing tips; 10 fine, angled, intraoral tips;
10 XX-fine, angled, intraoral tips

Dentine shade

Ref. 78552

Translucent shade

Ref. 78553

PROCLINIC EXPERT CORE BUILD UP and post cement

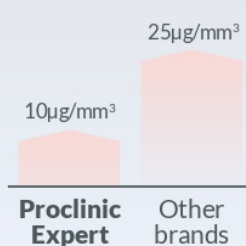


A highly radiopaque, flowable, dual-cure composite with excellent mechanical properties for core build up. Supplied in auto-mix syringes for simple, convenient application.

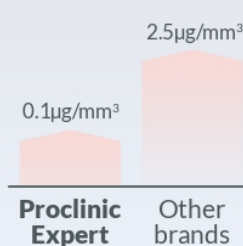
COMPRESSIVE STRENGTH



WATER ABSORPTION



WATER SOLUBILITY



Dr Eduardo González Arroyo
Clínica Fernández. www.oralurgerytube.com
Dental council registration No.: 28007247
"The intrinsic problems of core build up restorations are overcome by using a strong, easy-to-use, fast-setting material, such as the new Proclinc Expert Core Build Up"

Proclinc Expert Core Build Up. Dentine shade

1 x 10g syringe + 5 mixing tips + 5 intraoral tips	Ref. 78560
50 puntas de mezcla marrones tipo 11	Ref. 78519
50 puntas intraorales tipo 4	Ref. 78561



PROCLINIC EXPERT GLASS IONOMER CEMENT

Type I glass ionomer cement specifically indicated for cementing crowns, bridges, inlays, onlays and orthodontic bands and sealing pits and fissures.

15g powder + 10ml liquid

Ref. 78555



PROCLINIC EXPERT RESIN MODIFIED GLASS IONOMER CEMENT

Fluoride-releasing resin modified glass ionomer cement for luting metal, resin, metal/ceramic and all-ceramic crowns, bridges and onlays.

15g powder + 10ml liquid + 3ml conditioner

Ref. 78556

Cements

PROCLINIC EXPERT TEMPORARY CEMENT

Eugenol-free, elastic polymer



Eugenol-free, elastic polymer cement. Indicated for long-term cementation of implant-supported crowns and bridges and temporary cementation of crowns and bridges to natural teeth. Provides good retention, easy removal, high radiopacity and low solubility.

32



**Dr Juan Alberto
Fernández Ruiz**
Clínica Fernández.
www.oralsturgerytube.com
Dental council registration
No.: 07000598

“Around 95% of the restorations I perform are screwed directly onto implants, but when I have to use cement, I don't hesitate to reach for the new and totally reliable Proclinic Expert Temporary Cement”

SETTING STAGES

From 2' to 2.5'
1
GEL-SET STAGE

REMOVE
EXCESS
MATERIAL

From 4' to 5'
2
FINAL SETTING

Proclinic Expert Temporary Cement

1 x 6g auto-mix syringe + 5 mixing tips

Ref. 78576

PROCLINIC EXPERT PURE CALCIUM HYDROXIDE PASTE

Indicated for temporary root fillings, pulp capping, perforation repairs and lining deep cavities.

1.5ml syringe + 5 applicator tips

Ref. 7947





TEMPORARY RESTORATIVE MATERIAL

Zinc oxide-based cement for use in long-term temporary restorations or as a restoration base.

40g powder + 20ml liquid

Ref. 7828

CALCIUM HYDROXIDE

Hard, self-curing compound suitable for pulp capping and as a protective coating under restorative materials, cements, etc. Dentine colour. Radiopaque.

13g base + 11g catalyst

Ref. 35213

TEMPORARY CEMENT

Cement available with or without eugenol for temporary cementation of prosthesis. Withstands chewing forces. Easy to remove. 50g base + 15g catalyst.

Without eugenol

Ref. 35217

With eugenol

Ref. 35215



ZINC PHOSPHATE CEMENT

Indicated for permanent cementation of inlays, crowns, bridges and orthodontic bands.

80g powder + 55ml liquid

Ref. 35218



MIXING TIPS, TYPE 11

50 units

Ref. 78566

INTRA-ORAL TIPS

Type I 50 units

Ref. 78569

Type IV 100 units

Ref. 78624



DOUBLE-ENDED CEMENT SPATULA



1 unit

Ref. 8004

Tooth whitening

NEW
PRODUCT

PROCLINIC EXPERT WHITENING

In-office innovation
with a comfortable syringe



Rapid and effective treatment which reduces the patient's in-office time taking advantage of the in-office resources, achieving visible results in only one 30-minute session.

35%
HYDROGEN PEROXIDE

pH-NEUTRAL
DOES NOT DAMAGE ENAMEL

MICRO-
CRYSTALS

WPA

The WPA (Whitening Process Accelerators) microcrystals act by enhancing the whitening power of the Proclinic Expert treatment.

1-PATIENT KIT 1¹

DENT registration (exclusive selling rights in Spain)

Ref. 74273

CE Certified*

Ref. 74309

¹**Kit contents:** 1 double whitening syringe with 2ml per tube (4ml). 1 x 1.2g syringe of protective resin, 1 single-dose unit with 2g of initial polishing paste. Applicator tips.

3-PATIENT KIT²

DENT registration (exclusive selling rights in Spain)

Ref. 74272

CE Certified*

Ref. 74308

²**Kit contents:** 3 double whitening syringes with 2ml per tube (4ml). 3 x 1.2g syringe of protective resin, 3 single-dose units with 2g of initial polishing paste. Applicator tips.

PROTECTIVE RESIN

4 x 1.2g syringes of protective resin

Ref. 74310

*Consult the regulations in your country.



Greater desensitizing and refreshing action

The **Proclinc Expert** whitening gel is the first on the market to contain **aloe vera**. Combined with potassium nitrate, it offers greater desensitization, achieving an optimum balance between protection and whitening. Furthermore, it contains **mint** for a refreshing taste.

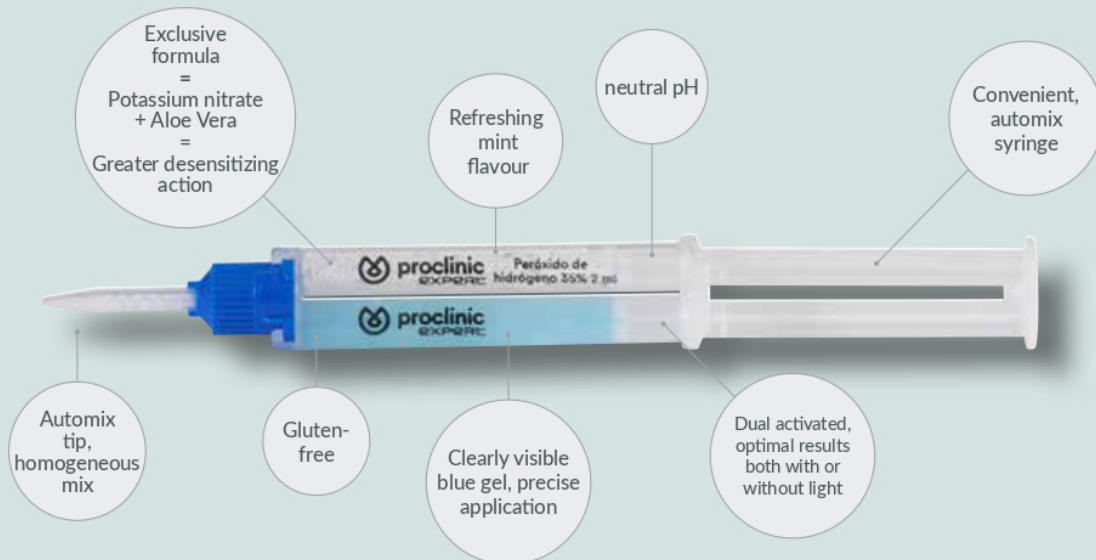
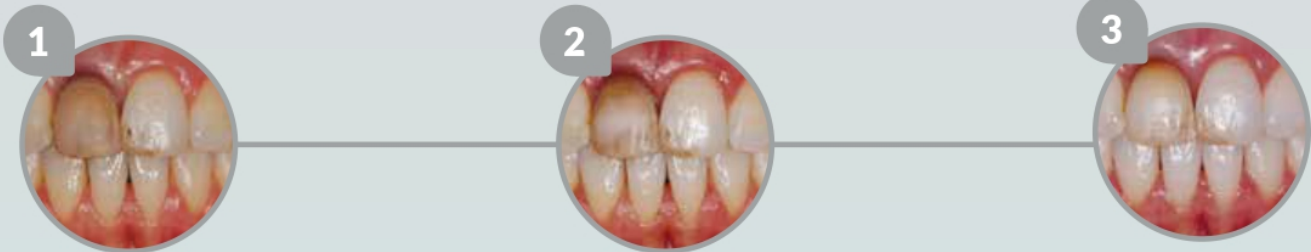
CLINICAL CASE STUDY

Dr. José Amengual Lorenzo

Oral Medicine Doctor.
Associate Professor. Department of Stomatology, University of Valencia.

“The new range of Proclinc Expert whitening products enables you to achieve satisfactory results even for severely discoloured cases.”

- 1 We present the case of a patient whose teeth exhibited levels of discolouration between A4 and A3.
- 2 The teeth were notably lighter after one whitening session consisting of three 15-minute, in-office applications of the 35% hydrogen peroxide product.
- 3 The colour of the patient's teeth changed substantially following a phase of home use whitening by using trays to apply the 16% carbamide peroxide product for 90 minutes a day for 8 weeks.



Tooth whitening

4

Whitening
PROGRAMS

PROCLINIC EXPERT WHITENING LAMP

Professional teeth
lightening and
whitening treatment

Light power:
2000MW

4
programmable
high-power
LEDs

Compatible
with Polaris®
by G.Comm

360°
range
of motion



36

TECHNICAL FEATURES

Weight:	+/- 800g
Maximum power consumption:	30VA
Current:	15A
Emission spectrum:	420-480nm
Maximum power of emitted light:	2000MW

Proclinic Expert Whitening Lamp

1 unit

Ref. 19601

Covers whitening
needs for the entire
denture or sections.

Simple and
ergonomic,
compact in size
and easy to use.



NEW
PRODUCT

PROCLINIC EXPERT WHITENING

Complement your
treatment at home



For home use whitening, Proclinic Expert comes in two concentrations, 10% and 16%, allowing you to tailor the treatment. Its aloe vera and menthol formula increases patient comfort during application.

ACCURATE DOSAGE

FOR ONE WEEK

From 40' to 75'

PER DAY



"I did a Proclinic Expert whitening treatment to celebrate my graduation. I wanted to look radiant. It was an incredibly important moment; the point from which I would be starting my degree. I did the treatment at home, and it was very easy to apply. I noticed an improvement every day."

Alba Alcalá

HOME USE KIT¹

16% carbamide peroxide

Ref. 74274

10% carbamide peroxide

Ref. 74275

¹Kit contents: 10 x 3ml syringes



WHITENING PEN

Practical and convenient, you can use it for 30 minutes, 1 to 3 times a day.

16% carbamide peroxide

Ref. 15162

Prosthetics

NEW
PRODUCT

PROCLINIC EXPERT SOFT RELINING MATERIAL

Say goodbye to discomfort
when chewing



The Proclinic Expert Soft Relining Material, made from A-silicone, provides durable elasticity capable of absorbing and redistributing forces. It has long-lasting colour stability and guarantees your patients will benefit from maximum comfort in just 1 session, as well as being odourless and flavourless.

38



Dr. Vincenzo Dominijanni
Spoleto, Perugia (Italy).

"Application with the Proclinic Expert Soft Relining Material cartridges was quick and easy. Upon removing the denture from the patient's mouth, I discovered a smooth, polished surface, which helped with the final touches. One month after the treatment, the prosthesis is in excellent condition and odourless."

■ Quick relining
in just one session

■ Permanently
elastic material

Tubes		Cartridges	
Kit ¹	Ref. 41522	Kit ²	Ref. 41520
Refill tubes: 50ml base, 50ml catalyst	Ref. 41523	50ml refill cartridge	Ref. 41521
5ml adhesive for tubes	Ref. 41525	5ml adhesive for cartridges	Ref. 41524

¹Kit contents: 1 x 50ml tube base, 1 x 50ml tube catalyst, 5ml adhesive, 2 x 7ml varnish (base + catalyst), 2 pipettes

²Kit contents: 50 ml cartridge, 5 ml adhesive, 2 x 7ml varnish (base + catalyst), 7 tips, 2 pipettes

■ Odourless and
tasteless

PROCLINIC EXPERT HARD RELINING MATERIAL

Achieve long-lasting
results



NEW
PRODUCT

The Proclinic Expert Hard Relining Material in auto-mix cartridges can be applied quickly and easily in just 1 session for complete repairs. It forms a strong bond to all types of acrylic dentures, ensuring an effective, long-lasting treatment, without any gradual loss of aesthetic qualities or colour stability.

39

25MPa
BONDING STRENGTH

EXCELLENT COLOUR STABILITY

INITIAL
COLOUR



EXPOSED
TO COFFEE

Sample submerged in coffee for 5 days at 27 °C

1%
VERY LOW LIQUID
ABSORPTION

VERY LOW SOLUBILITY

Cartridge

KIT: 50ml cartridge, 15ml adhesive, 6 mixing tips,
6 applicator brushes, 6 dispensing pipettes

Ref. 41526

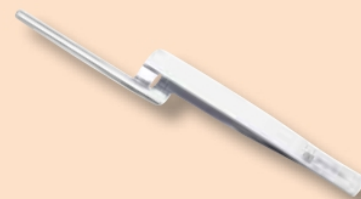
Prosthetics



ARTICULATING PAPER

200-micron thick paper with high-quality progressive colour transfer that perfectly highlights points of premature contact. Box of 300 strips.

Blue	Ref. 0195
Red	Ref. 01952



ARTICULATING PAPER FORCEPS

Made of stainless steel. To help with articulating paper placement.

1 unit	Ref. 8003
--------	-----------

40



ARTICULATING PAPER, THIN

Ultra-thin. 40-micron paper for accurately highlighting points of premature contact. Box of 120 strips.

Blue	Ref. 01955
Red	Ref. 01954



REINFORCEMENT RIBBON

Ribbon made of strong, high-density polyethylene fibres. Fully compatible with flowable composites, resins and adhesives. This product does not have an expiry date and its special braiding yields a clean cut. The kit includes a pair of scissors for cutting the ribbon. 50cm rolls.

Kit + Scissors	Ref. 7729	2mm	Ref. 7742	4mm	Ref. 7744
	Ref. 7741	3mm	Ref. 7743		

Posts

FIBREGLASS AND CARBON FIBRE POSTS

Anatomical, radiopaque posts that offer optimal affinity with dentine cements. Available in a wide range of diameters.

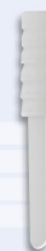
8 units	Fibreglass	Translucent fibreglass	Carbon fibre
Diameter	Ref.	Ref.	Ref.
Ø 1.0mm	7791	7746	7796
Ø 1.2mm	7792	7747	7797
Ø 1.4mm	7793	7748	7798
Ø 1.6mm	7794	7749	7799
Kit: 30 units and 4 drills	7790	7745	7795



STERILE, WHITE FIBREGLASS R+ POSTS

These posts feature a coronal portion for retention so are particularly indicated for medium and large reconstructions. Radiopaque.

Box of 10 units	
Ø 10mm	Ref. 78284
Ø 12mm	Ref. 78285
Ø 14mm	Ref. 78286



STERILE, WHITE FIBREGLASS POSTS

Particularly indicated for small reconstructions or those with long roots. Radiopaque.

Box of 10 units	
Ø 10mm	Ref. 78281
Ø 12mm	Ref. 78282
Ø 14mm	Ref. 78283



POST DRILLS

Made of stainless steel and available in a wide range of diameters. Compatible with all Proclinic post systems. Box of 1 unit.

Ø 1.0mm	Ref. 77919	Ø 1.4mm	Ref. 77939
Ø 1.2mm	Ref. 77929	Ø 1.6mm	Ref. 77949



Instruments



42

- Complete range of clinical instruments offering innovation, maximum quality and excellence to oral healthcare professionals. Compliant with the highest quality ISO 9001 and 13485 standards
- Made in Europe using state-of-the-art, high-precision technology.
- We have carefully selected raw materials by looking at the finest details so we can offer you an optimal performance during every procedure.



More than 200 instrument references on our website
www.proclinic-products.com



■ ISOLATION

Rubber dam frames
 Rubber dam forceps
 Clamps
 Dental dam punch

■ IMPRESSIONS

Smooth trays
 Perforated trays
 Partial trays
 Functional trays

■ MISCELLANEOUS

Syringes
 Endodontics instruments
 Prosthetics instruments
 Bridge removers
 Spacers
 Cotton dispensers
 Chain napkin holder

■ DIAGNOSTICS

Mirrors and handles
 Tweezers
 Examination probes

■ RESTORATIVE MATERIALS

Pluggers
 Burnishers
 Modellers
 Carvers
 Curettes
 Excavators
 Black chisels
 Spatulas for composite
 Amalgam accessories
 Matrix holders

■ PERIODONTICS

Periodontal probes
 Aluminium curettes
 Gracey Light curettes
 Columbia curettes
 Knives

■ SURGERY

Luxators and elevators
 Forceps
 Paediatric forceps
 Tweezers
 Mosquito forceps
 Periosteotomes
 Osteotomes
 Scissors
 Needle holders
 Miscellaneous

■ ORTHODONTICS

Page 60

■ LABORATORY

Page 64

Burs

Fabricated with a coating that doubly strengthens the adherence of the diamond, resulting in a better, smoother, sharper and more durable cut.

Cutting-edge research and development with the highest quality control.

Working length



FDA



MAXIMUM CUTTING QUALITY



Ask our sales team about our complete range or visit our website

WWW.PROCLINIC-PRODUCTS.COM

801 - 314 - 009

↑
ISO model No.

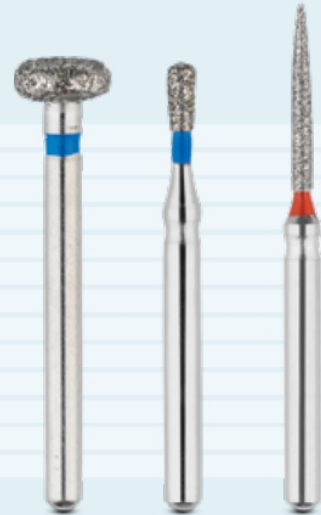
↑
Shank length

↑
Size

DIAMOND BURS FOR TURBINE

3 UNITS

Image	Shape	Model	Extra fine	Fine	Medium	Coarse	Super coarse
	Round	801, 801L, 802		■	■		
	Egg	379	■		■		
	Inverted cone	805, 806, 807			■		
	Pear	830			■		
	Wheel	909			■		
	Football	368	■	■	■	■	
	Cylinder	835, 836, 837			■	■	■
	Flat end taper	847, 848, 856, 850			■	■	■
	Torpedo	877, 878, 879			■	■	
	Needle	852, 858, 859	■	■	■	■	
	Tapered, round edge	R-847, R-848			■		
	Flame	862		■			



TUNGSTEN CARBIDE BURS FOR TURBINE

3 UNITS

Image	Shape	Model
	Round	3, 4, 5, 6, 7, 8
	Inverted cone	35, 36
	Cylinder	57L
	Tapered	169L, 170L
	Pear	330, 331



TUNGSTEN CARBIDE BURS FOR CONTRA-ANGLE

3 UNITS

Image	Shape	Model
	Round	2, 3, 4, 5, 6, 7, 8
	Inverted cone	35, 36



METAL AND CROWN CUTTING BURS FOR TURBINE

3 UNITS

Image	Shape	Model
	Cylinder	558RX
	Tapered	701RX
	Pear	1958



ENDO-Z BURS

3 UNITS

Image	Shape	Model
	Zekrya	Endo Access 152
	Zekrya	151-Z



Disposables



PROTECTIVE VISORS

With autoclavable frame. Excellent transparency. Covers the nose, eyes and mouth. Box of 12 units.

Visor protection + Frame	Ref. 49958
Visor protection	Ref. 49959



LIGHTLY POWDERED LATEX GLOVES

Talc-free. Lightly powdered with corn starch. High quality. AQL 1.5 White. Box of 100 units.

Large	Ref. 0138	Small	Ref. 0140
Medium	Ref. 0139	Extra small	Ref. 0170

46



FACE MASKS

With a soft texture and elastic ear loops. 3-ply antimicrobial filter barrier with BFE = 98.85% at 3.1µm. in compliance with EN 14683:2005. Box of 50 units.

Green	Ref. 0150
Blue	Ref. 01500
Pink	Ref. 01501

POWDER-FREE LATEX GLOVES

Talc-free latex gloves with an inner polymer coating to protect the user from contact with latex to prevent allergies. Easy to put them on. White. Box of 100 units.

Large	Ref. 55010	Small	Ref. 55030
Medium	Ref. 55020	Extra small	Ref. 55040

BLUE, POWDER-FREE LATEX GLOVES

Superior-quality, blue, talc-free latex gloves. Unbeatable tactile feel and greater sensitivity thanks to their microtexture. Blue. Box of 100 units.

Large	Ref. 76504	Small	Ref. 76502
Medium	Ref. 76503	Extra small	Ref. 76501

POWDER-FREE NITRILE GLOVES

Micro-textured and non-slip. Excellent tear resistance. Made from hypoallergenic materials. Blue. Box of 100 units.

Large	Ref. 7837	Small	Ref. 7834
Medium	Ref. 7835	Extra small	Ref. 7838



SALIVA EJECTORS

Made entirely from non-toxic materials. Flexible and with a metal core. Removable tip. 15cm long. Bag of 100 units.

Clear	Ref. 0122	Red/Fuchsia	Ref. 0122R
Opaque white	Ref. 0123	Yellow	Ref. 0122M
Green	Ref. 0122V	Orange	Ref. 0122N
Blue	Ref. 0122A	Lilac	Ref. 0122L



DISPOSABLE DAPPEN DISHES

Plastic. Can be slotted onto trays or held in the user's hand. Bag of 200 units.

Assorted colours	Ref. 49951
------------------	------------



COTTON CELLULOSE ROLLS

Premium quality. 300g bag.

No. 1	Ref. 0101
No. 2	Ref. 0102
No. 3	Ref. 0103

HOSE SLEEVES

Box of 250 units.

No. 1 Hose and syringe. 5.5cm	Ref. 49972
No. 2 FG and CA hose. 4.5cm	Ref. 49973

BARRIER FILM

Box of 1200 units.

Blue barrier film	Ref. 49970
Clear barrier film	Ref. 49971

COTTON ROLL DISPENSER

Made of strong plastic.

White	Ref. 0148
Blue	Ref. 01489

COTTON DISPENSERS

Made of stainless steel.

Dispenser	Ref. 80882
Waste container	Ref. 80883

PELLET DISPENSER

Made of autoclavable plastic.

White	Ref. 0115
-------	-----------

CHAIN NAPKIN HOLDER

Chain paper napkin holder. Length: 40cm

Metal	Ref. 59816
-------	------------



Disinfection



■ INSTRUMENT DISINFECTANT AND DETERGENT

Aldehyde-free 2% solution with broad spectrum of activity, compatible with all dental materials thanks to the presence of corrosion inhibitors.

1 litre	Ref. 49890
5 litres	Ref. 49891

■ ENZYMATIC INSTRUMENT DISINFECTANT AND DETERGENT

Tri-enzymatic, aldehyde-free 2% solution with broad spectrum of activity and corrosion inhibitors. Contact time: 5 minutes. Neutral pH and pleasant citrus scent.

1 litre	Ref. 49892
5 litres	Ref. 49893

■ FILE AND BUR DISINFECTANT AND DETERGENT

Ready to use. Aldehyde-free formula with broad spectrum of activity. Contact time: just 15 minutes.

2 litres	Ref. 49894
----------	------------



■ SURFACE DISINFECTANT AND DETERGENT

Ready to use. Alcohol- and aldehyde-free formula with broad spectrum of activity, compatible with all types of medical devices materials.

750ml	Ref. 49895
5 litres	Ref. 49889

■ SURFACE DISINFECTANT

Ready-to-use disinfectant for a fast, intra-patient disinfection of non-invasive and non-submersible medical devices. Dries quickly without leaving marks or a greasy film.

750ml	Ref. 49888
5 litres	Ref. 49897



■ ASPIRATION SYSTEM DISINFECTANT AND DETERGENT

Compatible with all aspiration systems. With a fresh scent. Aldehyde-free and with a broad spectrum of activity. Dilute to 2%.

1 litre	Ref. 49900
5 litres	Ref. 49901



■ DISINFECTANT WIPES

Aldehyde-free, alcohol-based formula with broad spectrum of activity. Disinfecting time: just 30 seconds. With a pleasant lemon scent.

Tub with 100 wipes	Ref. 49898
Refill, 100 units	Ref. 49899

NEW PRODUCT



■ ALCOHOL-FREE DISINFECTANT WIPES

Wipes impregnated with an alcohol-free, perfume-free disinfectant detergent solution for the disinfection and cleaning of all types of surfaces. 100% biodegradable.

Bag of 100 units	Ref. 55440
------------------	------------



■ MILD SOAP

Glycerine-enriched hand wash for frequent use. Does not contain any fragrances or colours. Neutral pH.

500ml	Ref. 49902
2 litres	Ref. 49903



■ STERILISATION POUCHES

Self-sealing. With sterilisation indicator.

Box of 200 units	Ref.	Box of 200 units	Ref.
6 x 11cm	79931	9 x 23cm	79932
7 x 26cm	79930	14 x 25cm	79933
9 x 16cm	79954	33 x 44cm	79947



■ STERILISATION ROLLS

With sterilisation indicator.

	Ref.		Ref.
5cm x 200m	79934	15cm x 200m	79950
7.5cm x 200m	79935	25cm x 200m	79951
10cm x 200m	79936		

Polishers



■ POLISHERS

Polishers for contra-angle handpieces, supplied in a range of colours, shapes and grit sizes for trimming, polishing and finishing reconstructions in amalgam, gold, etc. Box of 10 units.

Trimming, Cup, black	Ref. 0180	Polishing, Mini-point, brown	Ref. 0184
Trimming, Point, black	Ref. 0181	Finishing, Cup, green	Ref. 0185
Polishing, Cup, brown	Ref. 0182	Finishing, Point, green	Ref. 0186
Polishing, Point, brown	Ref. 0183	Finishing, Mini-point, green	Ref. 0187

■ BRUSHES AND CUPS FOR CONTRA-ANGLE

	HARD	MEDIUM	SOFT
Nylon brushes	■	■ □	■
Latex rubber cups		□	
Latex-free rubber cups	■	■	■



■ SOFT BRUSHES

Indicated for sensitive areas or areas near the gingival margin.

■ MEDIUM BRUSHES

Ideal for most clinical cases.

■ HARD BRUSHES

Indicated for removing stubborn stains and any discolouration.



■ POLISHING BRUSHES, GOLDEN

Cup-shaped polishing brushes embedded with silicon carbide for rapid, straightforward polishing of occlusal surfaces of composite, compomer or ceramic restorations without having to use a polishing paste.

Bag of 5 units

Ref. 81005



■ ARKANSAS STONE POINTS

High-quality, fine grit, aluminium oxide abrasive polisher with ceramic binder for an extra-fine finish. Especially indicated for rapid, accurate finishing of composite and ceramic. Available for turbine and contra-angle handpieces. Box of 10 units.

For FG
For CA

Ref. 01872
Ref. 01873



NEW PRODUCT

POLISHING DISCS

Plastic discs, especially designed for inter-dental polishing. Offering a complete solution to obtain a superior shine in each restoration.

Highly flexible, coated with aluminium oxide.

Set of 10mm Ø discs. 100 units (25 units x 4 grit sizes) + 1 mandrel Ref. 98080

Set of 14mm Ø discs. 100 units (25 units x 4 grit sizes) + 1 mandrel Ref. 98074

Refill 10-mm Ø discs.
100 units

Coarse Ref. 98070

Medium Ref. 98071

Fine Ref. 98072

Extra-fine Ref. 98073

Mandrel 3 units Ref. 98079

Refill 14-mm Ø discs.
100 units

Coarse Ref. 98075

Medium Ref. 98076

Fine Ref. 98077

Extra-fine Ref. 98078



POLISHING STRIPS

Polyester, 4-mm wide, medium-coarse grit finishing strips with a neutral central strip.

Box of 150 units Ref. 0116

STAINLESS STEEL SEPARATING STRIPS

Stainless steel, 4-mm wide abrasive strips with a neutral central strip.

Pack of 12 units Ref. 0117

STRIPPING HOLDER

Stainless steel, manually operated holder to ensure a perfect control. Use with single- or double-sided strips. Its incisal guide protects soft tissues from being cut. Holder and strips are sterilisable in an autoclave, with dry air or in the cold. Length of strips: 12cm.

More accurate control with the use of the holder:

- The incisal guide helps prevent laceration of the tissues.
- Grips the stainless steel abrasive strips up to the thinnest part.
- Use also with plastic and fabric strips.
- Autoclavable.

1 u Ref. L6970

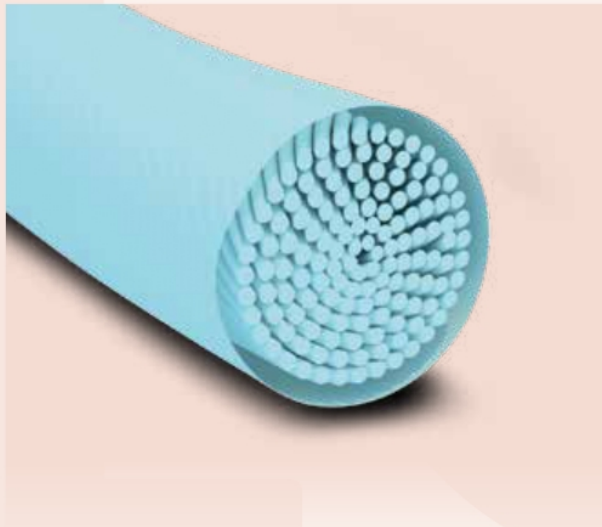


INTERPROXIMAL STRIPPING STRIPS

12 units, 15cm long.

Width	Single-sided 0.21mm	Double-sided 0.3mm
4mm	Ref. L6971	Ref. L6974
6mm	Ref. L6972	Ref. L6975
8mm	Ref. L6973	Ref. L6976

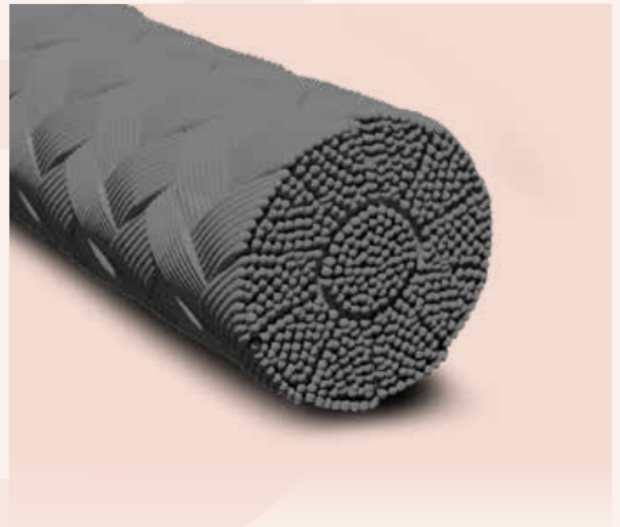
Sutures and Bi



■ SUPRAMID SUTURES

75cm long suture. Synthetic, non-absorbable monofilament suture. Black, manufactured from polyamide 6 or polyamide 6/6 sheathed with a polyamide 6 coating and sterilised by gamma radiation. Comes with an atraumatic, stainless steel needle. Supramid® sutures are known for their resistance to degradation and consistent tensile strength. They are indicated for general and plastic surgery.

4/0 (3/8-T19mm)	Ref. 49945
5/0 (3/8-T16mm)	Ref. 49944
4/0 (1/2-T22mm)	Ref. 50000
3/0 (1/2-T22mm)	Ref. 50001
4/0 (3/8-T16mm)	Ref. 50002
4/0 (1/2-T20mm)	Ref. 50004



■ SILK SUTURES

75cm long suture. Non-absorbable, braided, natural suture. Black, manufactured from beeswax- or silicone-coated fibroin and sterilised by gamma radiation. Comes with an atraumatic, stainless steel needle. Silk sutures are known for their resistance to degradation and consistent tensile strength. They are indicated for general, skin, vascular, plastic and gastrointestinal surgery, and whenever tissues need to be sutured or ligated with a non-absorbable material.

2/0 (1/2-R22mm)	Ref. 49934	3/0 (3/8-T19mm)	Ref. 49939
2/0 (1/2-T22mm)	Ref. 49935	4/0 (1/2-R22mm)	Ref. 49995
2/0 (3/8-T19mm)	Ref. 49968	4/0 (1/2-T20mm)	Ref. 49940
3/0 (1/2-R20mm)	Ref. 49936	4/0 (1/2-T22mm)	Ref. 49996
3/0 (1/2-R22mm)	Ref. 49969	4/0 (1/2-T26mm)	Ref. 49941
3/0 (1/2-T20mm)	Ref. 49937	4/0 (3/8-T16mm)	Ref. 49997
3/0 (1/2-T22mm)	Ref. 49993	4/0 (3/8-T19mm)	Ref. 49942
3/0 (1/2-T26mm)	Ref. 49938	5/0 (1/2-T22mm)	Ref. 49998
3/0 (3/8-T16mm)	Ref. 49994	5/0 (3/8-T19mm)	Ref. 49943



omaterials



■ PGA SUTURES

45 cm long suture. Braided, synthetic suture with full absorption after 90-120 days. Colourless, manufactured from several strands of polyglycolic acid (PGA) coated with polycaprolactone and calcium stearate and sterilised using ethylene oxide. Comes with an atraumatic, stainless steel needle. PGA sutures are known for their gradual loss of tensile strength as they are absorbed and metabolised by the body. They are indicated for soft tissue approximation and wherever medium absorption times are required.

3/0 -(3/8-T)-19mm)	Ref 49999
3/0 -(1/2-T)-22mm)	Ref 50003
5/0 -(3/8-T)-16mm)	Ref 50005
4/0 -(3/8-T)-16mm)	Ref 50006



■ HEMOSTATIC SPONGES

Gelatine sponges (of porcine origin) with powerful hemostatic and healing properties. Freeze-dried gelatine with a porous structure and high fluid absorption capacity. Absorbed in 15 days. Supplied as 1cm cubes that have been sterilised by gamma radiation.

Box of 40 units

Ref. 35211



■ TRIANGULAR SUTURE NEEDLES (T):

These needles have a triangular cross-section and therefore three cutting edges. Used for piercing hard tissues. Triangular suture needles can be grouped into two main types:



TC



TC, 1/2 circle needle.
Needle lengths are numbered as follows:
20mm = 12; 22mm = 14; 26mm = 16

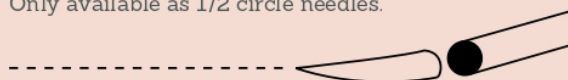
TB



TB, 3/8 circle needle.
Needle lengths are numbered as follows:
16mm = 12; 19mm = 15

■ TAPER SUTURE NEEDLE (C or R, DEPENDING ON THE MANUFACTURER):

Round cross-section with blunt, tapered point. Used for easily penetrated soft tissues, known for causing minimal damage to the tissue. Only available as 1/2 circle needles.



■ SUTURE SIZE

Suture size is indicated as O/O, with smaller numbers representing larger sizes. For example, a 2/O suture has a larger diameter than a 6/O suture.

Syringes



HYPODERMIC NEEDLES

Sterilised and individually packaged for improved handling. Silicone coated, triple bevelled and plastic hub. They are also compatible with all of the most common syringes and syringe systems.

27G - 0.4 x 35mm	Ref 7925
30XG - 0.3 x 16mm	Ref 7928
30G - 0.3 x 21mm	Ref 7923
30G - 0.3 x 25mm	Ref 7924
30XG - Short 0.3 x 12mm	Ref 7926

3-RING ASPIRATING SYRINGE

Three-ring syringe with double hook system.

1 unit

Ref. 59852



1-RING ASPIRATING SYRINGE

One-ring syringe with double hook system.

1 unit

Ref. 59851



SELF-ASPIRATING SYRINGE

Self-aspirating syringe with no spring or harpoon. Ergonomic, easy-to-use design. Made of stainless steel and plastic.

1 unit

Ref. 59853



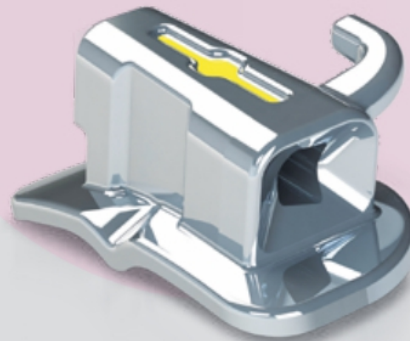
Orthodontics

■ Single non-convertible

■ Direct bonding

PROCLINIC EXPERT BUCCAL TUBES

Versatile
and easy to use



State-of-the-art Proclinic Expert buccal tubes offer maximum versatility, aesthetics and comfort, ensuring high-quality treatments with the greatest of comfort and ease.

55

■ ROTH technique
.018 & .022

■ MBT technique
.018 & .022

PROFESSIONALS RECOMMEND

- ▶ Trumpet-shaped, bevelled entrance on the mesial surface, which really helps with archwire insertion.
- ▶ Very complete positioning guides (both mesial-distal and occlusal-gingival) which, in combination with the occlusal notch, ensure correct positioning of the tube on the tooth.
- ▶ 4.3mm size results in better control of dental rotations.
- ▶ The hook's low profile and position parallel to the base eliminate interferences with the patient's soft tissues. It is also malleable and very easy to adjust, when required.

2 BASES AVAILABLE

EXTENDED



INDENT

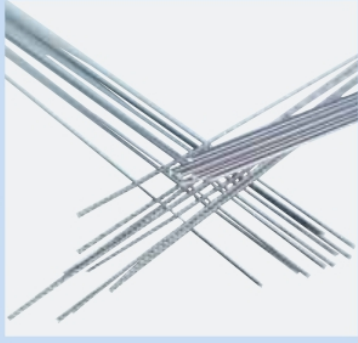


PROVIDES GREATER ADAPTABILITY

based on the size of the molar

Orthodontics

We guarantee the best nickel titanium alloys in all our archwires and straight lengths.



■ All our archwires must pass 14 different quality control tests before being released for sale. They undergo regular testing.

■ Outstanding elasticity
Consistent forces
Shape memory



Ask our sales team about our complete range or visit our website

WWW.PROCLINIC-PRODUCTS.COM

PROCLINIC EXPERT ARCHWIRES



STRAIGHT LENGTHS

ARCHWIRES

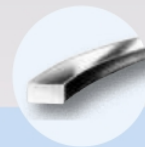
STRAIGHT LENGTHS

STAINLESS STEEL	NiTi	COPPER NiTi
Smooth	Super-elastic	Without stops
Braided, 3 strands	Super-elastic, thermal properties	With stops
Braided, 8 strands	Super-elastic, reverse curve of Spee	
With 2 T-loops	Super-elastic, aesthetic	
With 2 Bull loops	Aesthetic	
With 4 Bull loops		
Aesthetic		

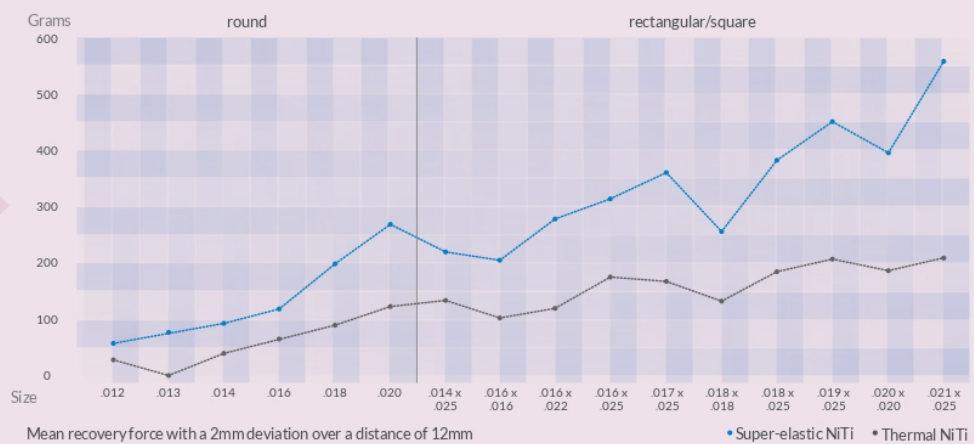
BRAIDED WIRE (in straight lengths and on spools)
3 strands
6 strands
7 strands
STAINLESS STEEL
Round
Rectangular
COLBOLOY BLUE
Round
Rectangular

See all measurements and shapes on our website www.proclinic-products.com

Availability of shapes depends on the type of archwire: Standard, Trueform and Europa II.



Recovery forces of Super-elastic NiTi archwires compared to Thermal NiTi archwires



Orthodontics



■ METAL AND AESTHETIC BRACKETS

We work with the most common techniques for each type of bracket.

Available with or without canine and premolar hooks.

Colour coded.

Metal:

- with nickel
- nickel-free

Aesthetic:

- ceramic
- ceramic with metal slot
- composite



	Metal	Metal, nickel-free	Metal Mini and Midi	Composite	Ceramic with silver slot	Ceramic
Roth technique .018	✓	✓	✓	✓		✓
Roth technique .022	✓	✓	✓	✓	✓	✓
Standard Edgewise technique .018	✓	✓		✓		
Standard Edgewise technique .022	✓	✓		✓		✓
MBT technique .018			✓			
MBT technique .022		✓	✓		✓	



■ DIRECT BOND BUCCAL TUBES

Stainless steel MIM tubes.

■ DIRECT BOND LINGUAL BUTTONS

Curved button. 10 units	Ref. L0816
Flat button. 10 units	Ref. L0817

■ T-HOOKS FOR VERTICAL-SLOT BRACKETS

Made of stainless steel. Used for placing elastic bands on vertical-slot brackets.

50 units	Ref. L3074
----------	------------



■ SPIN SELF-LIGATING BUTTON

A self-ligating button that offers new heights in terms of ease of use and clinical efficacy as it eliminates the need for more complex ligating systems.

10 units	Ref. L1870
----------	------------

■ ELASTIC TUBING

Aesthetic, non-allergenic and latex-free tubing.

■ ARCHWIRE HOOKS

Bag of 10 units.

Hooks .018"	Ref. L3263
Hooks .022"	Ref. L3264

■ GOLD EXTRUSION HOOK

1 unit	Ref. L0946
--------	------------

■ NEET SEPARATORS

Nickel titanium Neet Separator springs provide sufficient force to separate contact points prior to ligating. .018" diameter wire.

20 units	Ref. L0856
----------	------------

■ CRIMPABLE STOPS FOR ARCHWIRES AND STRAIGHT LENGTHS

These crimpable stops hold archwires in place or restrict the movement of teeth for increased control during orthodontic treatments. Indicated for use with round and rectangular archwires, from .018" up to .021" x .025". MIM manufacturing technology.

10 units	Ref. L6024
----------	------------

■ ELASTIC THREAD

Hollow elastic thread for producing longer lasting knots.



Ask our sales team about our complete range of brackets and attachments or visit our website

WWW.PROCLINIC-PRODUCTS.COM

Orthodontics



INSTRUMENTS

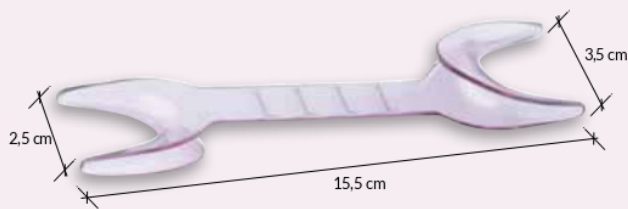
Manufactured from top-quality stainless steel and designed for ease of use and maximum efficiency in all dental treatments.

State-of-the-art technology and extremely strict quality control checks are used throughout the manufacturing process.

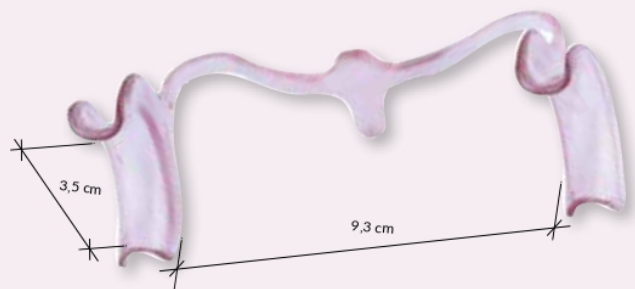
Essential for bending round wires



60



LIP RETRACTOR



CHEEK RETRACTOR



See our complete range of retractors and more than 800 Proclinic orthodontic products on our website

WWW.PROCLINIC-PRODUCTS.COM

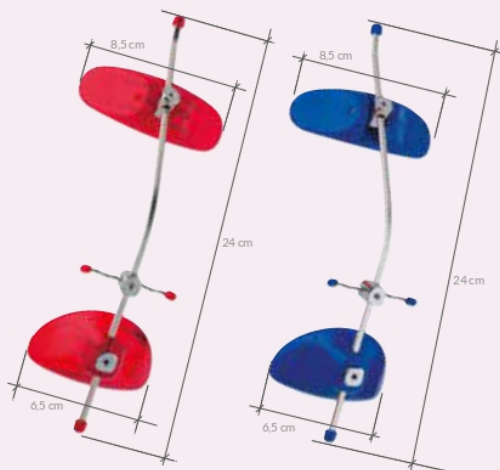
INTRAORAL, EXTRAORAL APPLIANCES AND WAXES



Elastic ligature ties
Chain ligature ties
Metal ligature ties
Elastic bands
Rotation wedges
Intraoral elastic bands

Spacers
Quad Helix
Chains
NiTi springs
Elastomeric modules
Goshgarian palatal bars

Warren spring
Kobayashi ligature ties
Aesthetic lingual buttons
Aesthetic bondable eyelets
Bite ramp



ADJUSTABLE FACE MASK

This face mask can be adjusted in several directions to guarantee the best traction possible. The kit includes one face mask, one Allen key, one replacement chin pad and replacement forehead pads.

Blue	Ref. L0210
Red	Ref. L0211
Small blue	Ref. L0229
Spider print	Ref. L8100
Floral print	Ref. L8101
Graffiti print	Ref. L8102

ORTHODONTIC WAX

Reduces any irritation caused by brackets. Pack of 25 boxes, each containing 5 bars.

Unflavoured	Ref. L0430
Cherry flavour	Ref. L0431
Apple flavour	Ref. L0432
Mint flavour	Ref. L0433

ORTHODONTIC SILICONE

Better quality than wax. Stays on bracket wings for longer.

Pack of 25 boxes	Ref. L0336
------------------	------------

CHIN CUP

Two-hook, suede-coated chin cup with foam rubber liner. Features ventilation holes for improved comfort.

1 unit	Ref. L0213
--------	------------

Laboratory

PROCLINIC EXPERT A-SILICONE



Biocompatible A-silicone specifically developed for laboratory use with a high final hardness (85 Shore A) and ideal elasticity. Outstanding detail reproduction with no deformation in flask. Excellent heat resistance (+200°C). Blue.

1	2	3
MIXING TIME 30'	WORKING TIME 2'	SETTING TIME 6'

Proclinic Expert A-Silicone

Base + Catalyst (2.5kg + 2.5kg)

Ref. H00194

*Warning: Latex gloves may prevent A-silicones from setting correctly. We recommend washing your hands thoroughly or using vinyl gloves. Keep the contact surface clean and dry.

C-silicone specifically developed for laboratory use with high hardness (85 Shore A) and resistance to elastic deformation. Outstanding detail reproduction with no deformation in flask. Excellent heat resistance (140°C).



Marcel Ferrer
Dental technician
Dental council
registration No. 1436

"It reproduces details in high definition and has a good consistency. It is convenient to use on a daily basis, easily trimmed with a scalpel and does not contain irritating components."

Proclinic Expert C-Silicone

Putty 5kg	Ref. H00195
Catalyst 60ml	Ref. H00196

PROCLINIC EXPERT C-SILICONE





■ A+B DUPLICATING SILICONE

High-precision elastic A-silicone for duplicating laboratory models. Highly fluid, easily degassed and quick-curing. Its outstanding reproduction accuracy and high dimensional stability ensure the reliable reproduction of models. Highly compatible with phosphate, polyurethane resin and plaster coatings.

Shore 16, 6kg	Ref. H62020
Shore 22, 18kg	Ref. H62021
Shore 30, 18kg	Ref. H62022



■ DUPLICATING FLASK FOR SILICONE

4-piece plastic flask for duplicating with silicone. Its parts can be adjusted to reduce the amount of silicone used.

1 unit	Ref. H21051
--------	-------------

■ CASTING LINER FOR FRAMEWORK PROSTHESIS

Liner for casting on models. Bonded with phosphate. High expansion and accurate fit. Reduced working time. The smooth surface of the model helps with modelling and guarantees very smooth casting surfaces. Mix with water to line the cylinder, thereby reducing the hardness and aiding separation.

45 x 400g bags	Ref. H21034
----------------	-------------

■ MIXING FLUID FOR FRAMEWORK PROSTHESIS LININGS

1 litre	Ref. H21035
---------	-------------



Laboratory

WAXES FOR FIXED PROSTHESIS

Pack of 65g

	Shade	Working temperature	Ash-free	Ref.
CAD/CAM	Opaque beige	56°C		H44485
Universal Modelling	Green	55°C		H20020
	Grey	55°C		H20022
Inlay Modelling	Green	53°C		H20024
	Grey	53°C		H20026
Cervical	Red	59°C		H20018
Burnout Press	Yellow	55°C	✓	H20028
	Dentine	55°C	✓	H20030
Aesthetic Modelling	Ivory	53°C	✓	H20034
	Brown	53°C	✓	H20036



WAX WIRE

Spool of wax wire for preparing sprues. 250g roll

Hard, green		Medium, blue	
2.5mm	Ref. H20038	3.0mm	Ref. H20048
3.0mm	Ref. H20040	3.5mm	Ref. H20050
3.5mm	Ref. H20042	4.0mm	Ref. H20052
4.0mm	Ref. H20044	5.0mm	Ref. H20054
5.0mm	Ref. H20046		



DIPPING WAX

Dipping wax with excellent carving properties for making crowns. The elasticity of the wax prevents copings from deforming when they are being removed from the die. Working temperature of 87°C. 300g pack.

Yellow Ref. H20032



PKT SPATULA

Spatulas from the PK Thomas system for accurate wax modelling. Colour-coded based on use.

Gold	Ref. H21055	Red	Ref. H21058
Green	Ref. H21056	Silver	Ref. H21059
Blue	Ref. H21057		



WAX SHEETS AND WAX FOR THE ACRYLIC TECHNIQUE

Pink wax sheets for modelling denture bases and/or resin saddles for acrylic teeth. Easily deformed and thermostable during bite registration.

Pink modelling wax 450g	Ref. 0176
Pink modelling wax For warmer climates 450g	Ref. 01762
Pink modelling wax 2500g	Ref. H20812
Pink modelling wax For warmer climates 2500g	Ref. H20802



DENTAL SET-UP WAX

Red dental set-up wax for quick, safe positioning of acrylic teeth. Easily removed with hot water. 220g pack.

5 x 5mm	Ref. H20010
---------	-------------

FRAMEWORK WAX SHEETS

Sheet dimensions: 75 x 150mm. Pack of 15 sheets.

Smooth		Fine etching	
0.30mm	Ref. H20056	0.30mm	Ref. H20064
0.40mm	Ref. H20058	0.40mm	Ref. H20066
0.50mm	Ref. H20060	0.50mm	Ref. H20068
0.60mm	Ref. H20062	0.60mm	Ref. H20070

WAX RETENTION MESH

Wax retention mesh for framework technique.

Square mesh. 20 units	Ref. H20072
Round mesh. 20 units	Ref. H20074
Round retention. 40 units	Ref. H20076



ARTICULATING WAX, BARS

Bars of bite registration wax. 500g box.

Green	Ref. H20810
Yellow	Ref. H20814

ARCHED ARTICULATING WAX

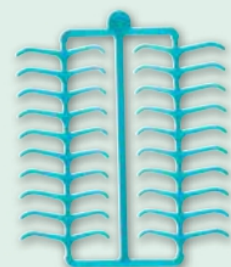
Preformed arch-shaped wax. Reduces bite registration time. Anatomically-shaped channel facilitates registration. Available in 2 grades of hardness. Pack of 100 units.

Yellow - soft	Ref. H20012
Red - medium	Ref. H20814

BLOCK-OUT WAX

Block-out wax, especially recommended for the casting technique. Adheres firmly to plaster, easy to carve. Not to be used for burnout techniques. Working temperature 51°C. 65g pack.

Pink	Ref. H20016
------	-------------



PRE-FORMED WAX CLASPS

Burnout wax that can be adjusted to the model without any tension. Thanks to its transparency, marks are visible through the wax. Pack of 200 units. 20 plates.

Molars	Ref. H20078
Premolars	Ref. H20080
Bonyhard	Ref. H20082
Straight-angles	Ref. H20084

Laboratory

66

PLASTER

	Format	Shade	Ratio ml/100g	Setting expansion (2h)	Compressive strength (1h)
TYPE IV					
Extra-hard plaster	6kg / 18kg	Grey, golden brown	20ml	0.07%	49MPa / 499kg/cm ²
Hard natural plaster	4kg / 25kg	Pink, ivory	22ml	0.09%	43MPa / 438kg/cm ²
Plaster for Bases	6kg / 18kg	Blue	24ml	0.08%	39MPa / 398kg/cm ²
TYPE III					
Basic Plaster	25kg	Green	30ml	0.15%	24MPa / 245kg/cm ²
Natural Plaster	6kg / 25kg	Pink, blue, yellow	26ml	0.13%	34MPa / 347kg/cm ²
Extra-white Plaster for Orthodontics	6kg / 18kg	Extra-white	26ml	0.13%	34MPa / 347kg/cm ²
Plaster for Orthodontics	5kg / 25kg	White	26ml	0.13%	34MPa / 347kg/cm ²
Plaster for Articulators	6kg / 18kg	White	28ml	0.03%	24MPa / 245kg/cm ²
TYPE I					
Snow Plaster	45kg / 20kg	White	94ml	0.05%	4-7MPa / 41-71kg/cm ²



V-SHAPED BI-PIN WITH SLEEVE AND RUBBER STOP

Nickel-plated, V-shaped bi-pin with adjustable sleeve and rubber stops.

1000 units Ref. H20701



LIGHT-CURED BASE PLATES

Light-cured base plates. 2.2mm thick. Very easy to mould, very strong and easily adapted to the model. Pink.

50 units Ref. H20822



MAGNET SYSTEM

Practical for attaching and removing plaster models from the articulator.

Magnet. 10 units	Ref. H20684	Magnet holder. 100 units	Ref. H20687
Magnet. 100 units	Ref. H20685	Magnet plate. 10 units	Ref. H20688
Magnet holder. 10 units	Ref. H20686	Magnet plate. 100 units	Ref. H20689

DOWEL PINS

Brass dowel pins, 22mm.

1000 units Ref. H20692



FINISHING AND SANITISING SPRAY

Mint-flavoured prosthesis finishing spray, perfect for removing polish residues.

Spray with nozzle. 100ml	Ref. H20820
Spray. 75ml	Ref. H20700

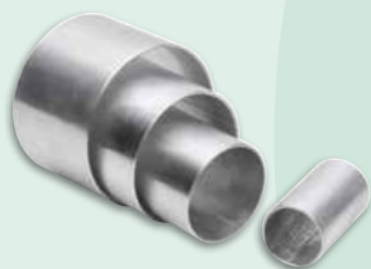


UNIVERSAL BASE PLATE

Rubber. For a fast and clean preparation of models. These bases facilitate firm seating in the articulator with no cutting or sawing. 1 unit.

Small	Ref. H21040
Medium	Ref. H21041
Large	Ref. H21042

Laboratory



■ STEEL CASTING CYLINDER

Steel cylinder for casting work during the preparation of fixed dentures. 1 unit.

1x	Ref. H20669
3x	Ref. H20670
6x	Ref. H20671
9x	Ref. H20672



■ BASE FOR CASTING CYLINDER

1 unit.

1x	Ref. H20673
3x	Ref. H20674
6x	Ref. H20675
9x	Ref. H20676
Universal	Ref. H20677



■ SILICONE CYLINDER, CONICAL BASE

Silicone cylinder for the preparation of lining cylinders using the casting technique. 1 unit.

3x	Ref. H20678
6x	Ref. H20679
9x	Ref. H20680

■ SILICONE CYLINDER

1 unit.

3x	Ref. H20681
6x	Ref. H20682
9x	Ref. H20683

■ FIXED DENTURE LINER

Precision liner for casting crowns, bridges and injection-moulded ceramics.

30 x 160g bags	Ref. H21030
----------------	-------------

■ EXPANSION FLUID FOR FIXED DENTURE LINERS

1 litre	Ref. H21031
---------	-------------



■ METAL CALLIPER

Simple stainless steel measuring calliper for controlling the thickness of metal crowns. Can be read from both sides. Measuring range from 0-10mm. Accuracy of 0.1mm.

1 unit	Ref. H21044
--------	-------------



■ DIGITAL VERNIER CALLIPER

High-precision digital measuring instrument made of scratch-resistant stainless steel.

1 unit	Ref. H21045
--------	-------------

■ BOHLEY VERNIER CALLIPER

15-cm stainless steel calliper with fine tips for a greater accuracy.

1 unit	Ref. H21053
--------	-------------



■ PROSCAN ANTI-GLARE SCAN SPRAY

Anti-glare scan spray for laser scanning; compatible with all materials (metal, PMMA, Ti); creates a film of very fine pigments; 100% water soluble and easy to dispense.

400ml

Ref. H20818



■ OCCLUSION SPRAY

Articulating spray used to highlight occlusal points, ideal for adjusting crowns and bridges.

Green	Ref. H20663	Blue	Ref. H20665
Red	Ref. H20664	White	Ref. H20666



■ GLASS BEADS

Lead-free, sodium microspheres with 100% non-abrasive particles – do not deform or scratch metal. Non-toxic.

45kg, 50µm

Ref. H62008

■ ALUMINIUM OXIDE

99.60% purity, controlled crystallisation. Does not cause silicosis. White.

5kg, 50µm	Ref. H62000	25kg, 50µm	Ref. H62004
5kg, 100µm	Ref. H62001	25kg, 100µm	Ref. H62005
5kg, 150µm	Ref. H62002	25kg, 150µm	Ref. H62006
5kg, 250µm	Ref. H62003	25kg, 250µm	Ref. H62007



■ REFRACTORY TRAY

Refractory trays for use in conventional ceramic ovens.

Two 8cm Ø firing trays plus 20 ceramic pins

Ref. H20696



■ CERAMIC FIRING PINS

10 units

Ref. H20697

Laboratory

■ Diamond discs.
Manufactured from premium-quality stainless steel components coated with natural diamond to ensure an efficient cutting action and durability.

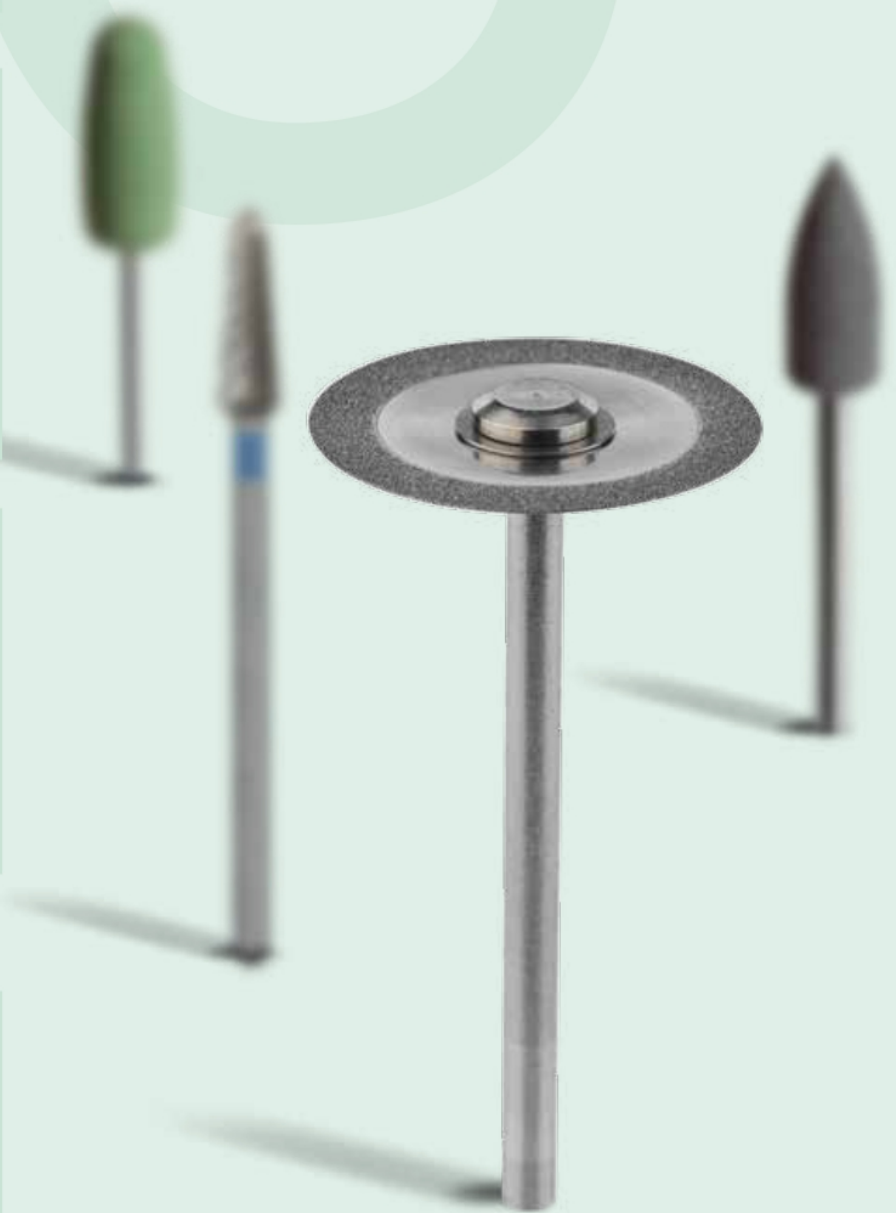
■ Tungsten carbide cutters.
Manufactured from high-quality tungsten carbide and available in the most widely used cutting patterns. Balanced and machined precision. ISO colour coded.

■ Polishers for acrylic.
Manufactured from aluminium oxide to obtain high-quality surfaces that perform optimally from pre-polishing to high-gloss polishing.



Ask our sales team
about our complete
range or visit
our website

WWW.PROCLINIC-PRODUCTS.COM



SUPERFLEX HP DISCS

Super-flexible diamond discs with extra-fine grit.

1 UNIT

Ø 22 x 0.17mm	Ref. H20912
Ø 19 x 0.17mm	Ref. H20913
Ø 18 x 0.17mm	Ref. H20914
Ø 10 x 0.17mm	Ref. H20916

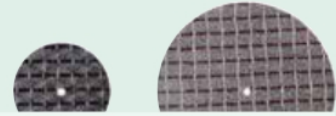


METAL CUTTING DISCS

Aluminium oxide discs for cutting metals with double fibreglass reinforcement.

20 UNITS

Ø 22 x 0.2mm	Ref. H20784
Ø 22 x 0.3mm	Ref. H20786
Ø 22 x 0.5mm	Ref. H20788
Ø 40 x 0.5mm	Ref. H20790
Ø 40 x 0.7mm	Ref. H20792
Ø 40 x 1.0mm	Ref. H20794



CUTTING BURS

For cutting and trimming acrylics, composites, alloys and plasters. 2.35mm shank.

1 UNIT

	Visual ref. / Model																								
	71	77	79	129	136	137	138	139	251	257	261	295	351	361	0110	0610	0620	0910	1210	5250	5320	5450	5610	7110	7210
	Tungsten														Widia										
Extra-fine																									
Fine grit																									
Medium grit																									
Double-cut																									
Coarse																									
GSQ coarse																									
Extra-coarse																									
Fine spiral																									



SILICONE POLISHERS FOR ACRYLIC

Box of 12 units.

Coarse grit. 10 x 20mm (max. 12.000rpm)	Ref. H20824	Fine grit. 10 x 24mm (max. 12.000rpm)	Ref. H20834
Medium grit. 10 x 20mm (max. 12.000rpm)	Ref. H20826	Coarse grit. 6 x 16mm (max. 20.000rpm)	Ref. H20836
Fine grit. 10 x 20mm (max. 12.000rpm)	Ref. H20828	Medium grit. 6 x 16mm (max. 20.000rpm)	Ref. H20838
Coarse grit. 10 x 24mm (max. 12.000rpm)	Ref. H20830	Fine grit. 6 x 16mm (max. 20.000rpm)	Ref. H20840
Medium grit. 10 x 24mm (max. 12.000rpm)	Ref. H20832	Coarse grit. 13 x 20mm (max. 10.000rpm)	Ref. H20842



Search by category



> 2500 references

Product list

New products

Other catalogues and brochures

Search

If you can't find the product you are looking for in this catalogue, please visit www.proclinic-products.com





Δ | Ιπποκρήνης 43, Ζωγράφος

Τ | 210 74 73 886

Ε | info@kapodistria.gr

W | www.kapodistria.gr

f | Οδοντιατρικά Καποδίστρια