



DENTAL GUIDE

2019
2020

 **iTENA[®]**
CLINICAL PRODUCTS

EDITO

It is with real pleasure that I address you, dear practitioners, through this **new catalogue**, which shares with you our product information, illustrated with new clinical cases.

For more than 15 years, Itena Clinical has been working hard to bring you **innovative products to make your practice easier**. Our products come from our Research & Development department, which offers you the best solutions available, thanks to its work with surgeon-dentists and partner universities.

We also strive to help you incorporate innovation into your daily practice, so that you can take new developments in your stride. Today, in this “race for profitability”, the work of our R&D teams must focus on what is really useful to you and your patients.

All our teams, as you will understand, **offer you quality products**. Every day, millions of patients receive dental treatments, and our solutions are thus being “prescribed” at every moment of the day. We owe you quality not only because you trust us, but also because you entrust us, through your orders, with the smile of your patients.

And because, thanks to you, we have been very successful, **I take this opportunity to thank you for your loyalty**.

Looking forward to continuing our collaboration,

LIONEL DESCOQS,
Itena Clinical's CEO.

4 to 9

CARE & PREVENTION

PERIODONTAL CARE	6
PIT & FISSURE SEALANT	8

10 to 49

RESTORATIVE DENTISTRY

POST SYSTEM	12
RECONSTRUCTION	20
RESTORATION	24
BONDING/CEMENTATION	28
ENDODONTICS	40
IMPRESSION	44

50 to 57

PROSTHETIC DENTISTRY

CAD/CAM PROSTHESIS	52
TEMPORARY PROSTHESIS	54

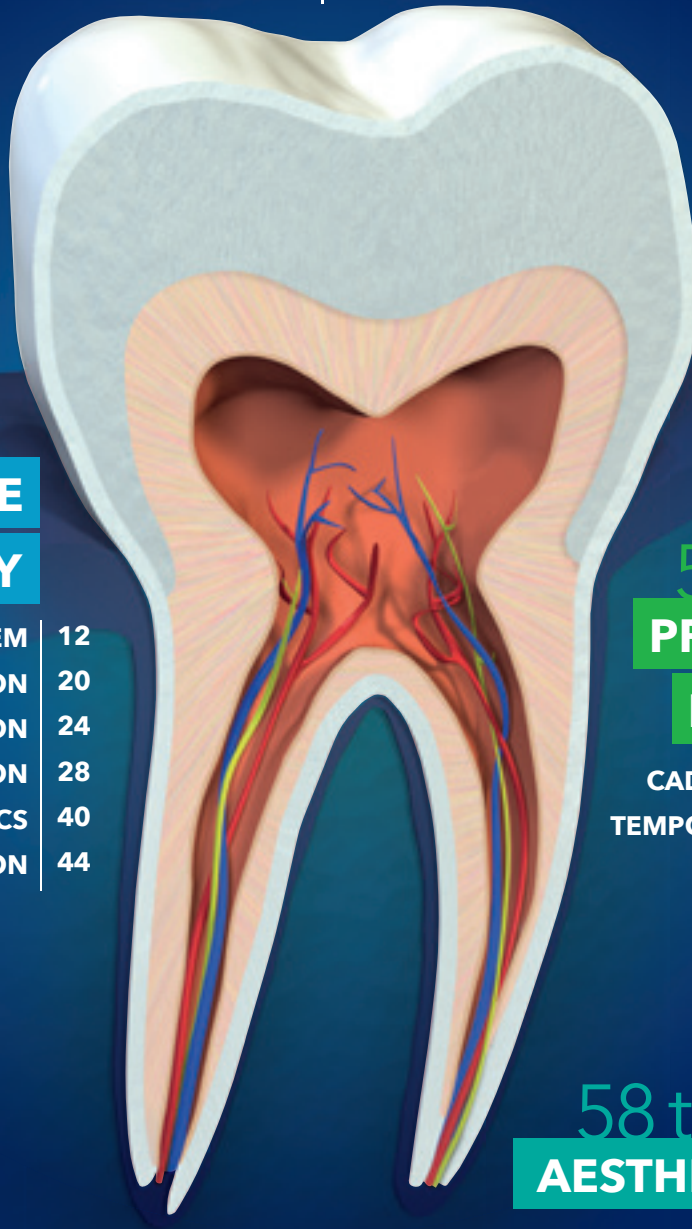
58 to 62

AESTHETICS

TAKE-HOME WHITENING	60
OFFICE WHITENING	62

63 to 66

ACCESSORIES



CARE & PREVENTION



PERIODONTAL CARE	6
PIT & FISSURE SEALANT	8

KLIRICH® PRO

Periodontal Gel

ADVANTAGES

Unique combination of natural ingredients with exceptional properties: helps fight inflammations and stimulates healing.

PATENTED FORMULA



Also available in pen format for home use by the patient



Technical data

Composition: Periodontal gel based principally on plant extracts with remarkable properties:

- Grapefruit seeds
- Calendula flowers
- Alchemilla leaves
- Curcumin
- Stevia extract
- Clove
- Hyaluronic acid
- Sodium carbonate

INDICATIONS

Patented oral gel made in France from natural ingredients.

Klirich® Pro and Klirich® can address most of the problems of the oral cavity and gums.

This gel is intended to be applied in adults' oral cavities to fight inflammatory conditions such as gingivitis, bleeding, gingival recessions and gingival pockets. It is particularly recommended in cases of mucositis, ulceration, flap surgery (implants) and post-scaling.

CLINICAL CASES

Photos by Dr. Adrien Garnier



Papilla inflammation Day 1



Papilla inflammation Day 2



Recession Day 1



Recession Day 2



Gingival bead Day 1



Gingival bead Day 2



Inflammation before treatment

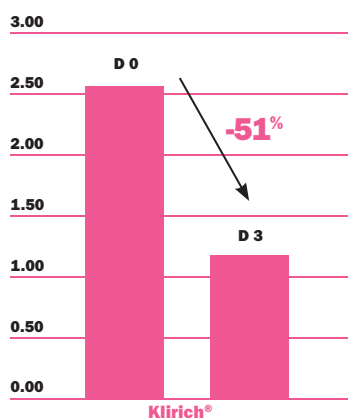


Inflammation after treatment



Periodontal surgery for root coverage

Gingival inflammation index



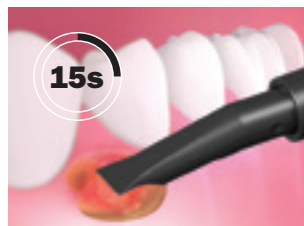
PROTOCOL



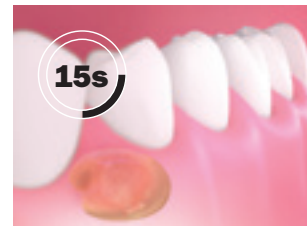
Shake the Klirich Pro's syringe to mix the ingredients well. Lock the specific periodontal soft application tip.



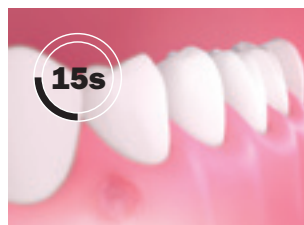
Apply a small quantity of gel to affected areas.



Massage for at least 15 seconds until well absorbed.



Keep in mouth for 15 seconds without massaging or swallowing.



Suck up and wait 15 seconds. Rinse the excess of gel with water.

PLAS'TIP

Ideal for cleaning periodontal pockets.
FIND IT PAGE 65



References

Klirich® Pro

2 syringes of KLIRICH Pro (3 ml) + 12 single use gingival applicator tips..... KKLIRC2S

Tips

1- 20 soft applicators tips.....KLE-GV20
2- 20 bent periodontal tips.....KLE-PR20

Klirich®

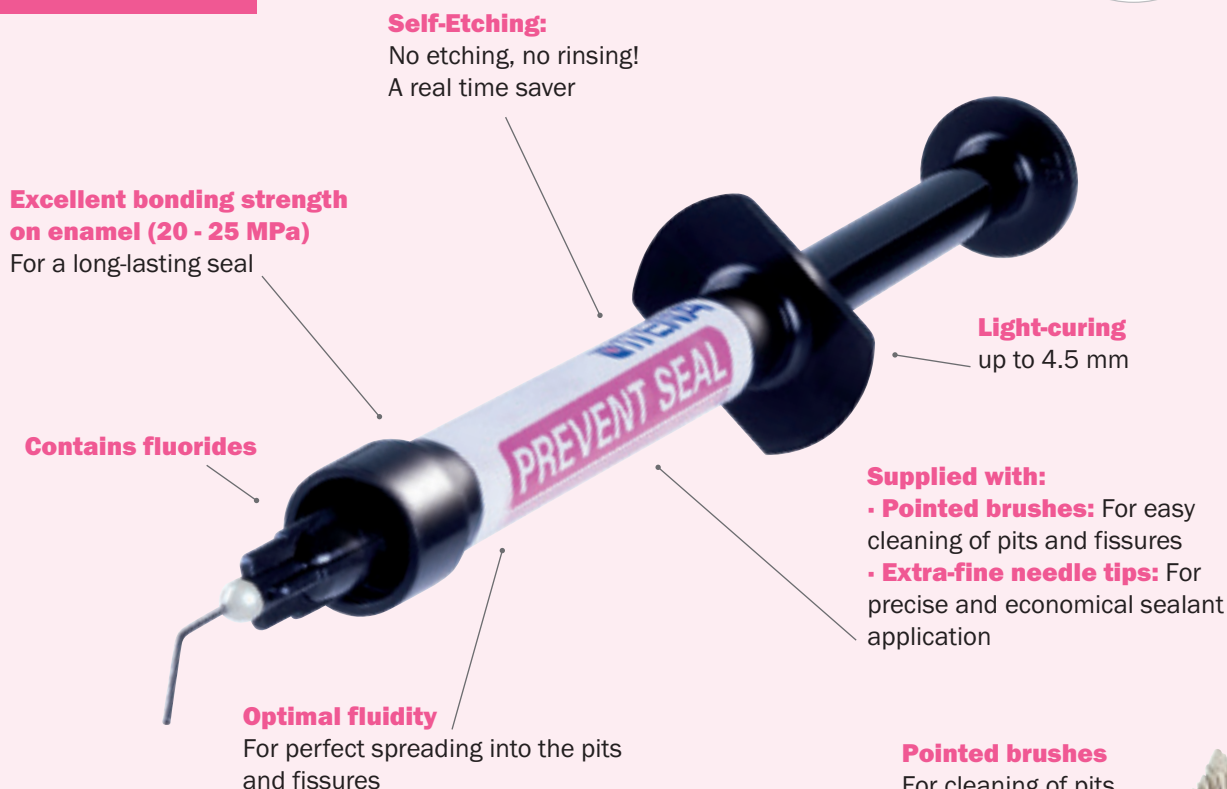
1 KLIRICH pen (4 ml).....KLIRSTYL1
3 KLIRICH pen (4 ml).....KLIR-H3S

PREVENT SEAL

Self-etching light-cured pit & fissure sealant



ADVANTAGES



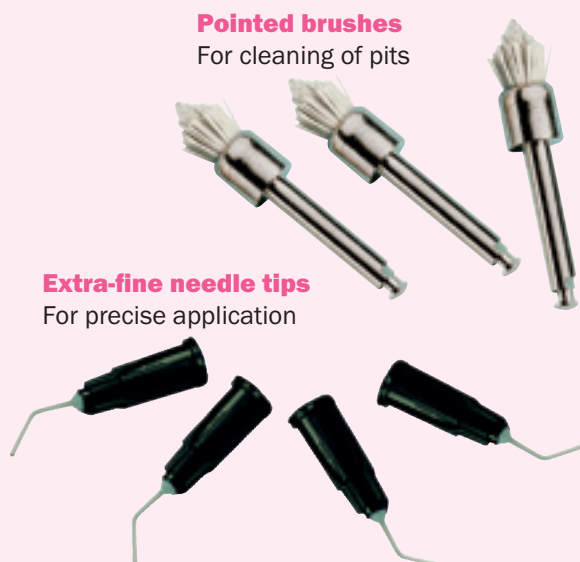
HINTS & TIPS

- Instead of using small brushes, air abrasion can be used to thoroughly clean the tooth before applying the sealant. All alumina particles should be removed as these reduce the adhesion of Prevent Seal.
- The prepared surface must be thoroughly dried before Prevent Seal is applied, as the product is hydrophobic
- Prevent Seal is a composite resin and is therefore compatible with all other available composites.
- Contains the photoinitiator camphorquinone. Use a curing light emitting between 400 and 500 nm

INDICATIONS

- Use of the self-etching technique **for the preventative sealing of pits on permanent teeth in patients that present a raised risk of developing cavities.**
- For pits and fissures that are difficult to clean and therefore particularly sensitive to dental decay.

Sealing with Prevent Seal self-etching pit & fissure sealant enhances oral hygiene and offers protection to sensitive teeth surfaces by protecting them with waterproof layer of resin, preventing the penetration of micro-organisms.



References

Prevent Seal

- 1.2 ml syringe
+ 10 extra-fine needle tips 25G PVSEAL-1.2
+ 3 pointed brushes PVSEAL-1.2

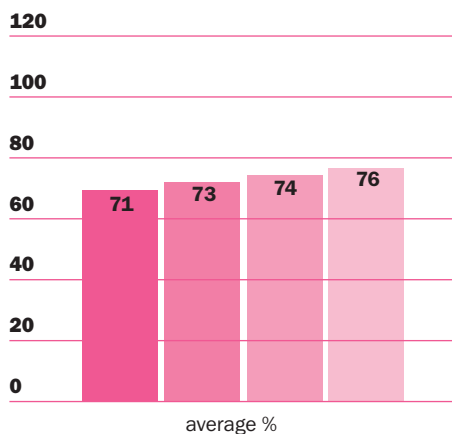
Accessories

- 20 extra-fine needle tips 25G PVSE-25G
15 autoclavable pointed brushes PVBRO-15

Comparative study of the sealing strength of 4 different materials used for sealing pits and fissures.

IMEB Laboratory, Faculty of Dentistry Marseille, Dr. Elena Savi, Prof. Corinne Tardieu, Prof. Jacques Déjou

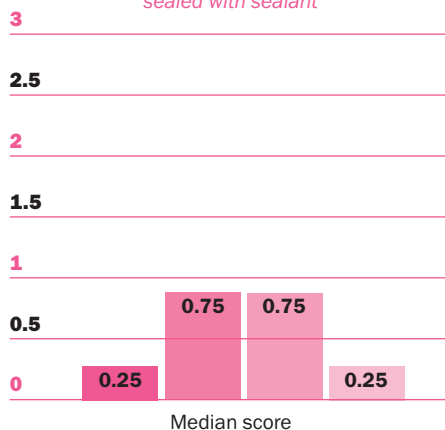
Average depth of sealant penetration into fissure



average %

Clin Pro Helioseal Embrace Prevent Seal

Average depth of dye penetration into a fissure sealed with sealant



Median score

Score 3: penetration of colourant into fissure itself

Score 2: penetration reaching the internal area of sealed fissure

Score 1: penetration limited to the exterior area of sealed fissure

Score 0: dye

CONCLUSION OF STUDY:

Prevent Seal performances (i.e. penetration of sealant into pits and fissures and quality of peripheral seal) **are equivalent to those of conventional sealants that require prior etching**

PROTOCOL

Photos by Dr. Shalom Mehler



Initial view



1 Clean using water spray brush



2 Air-dry



3 Apply Prevent Seal



4 Let stand for 15 seconds



5 Light-cure for 20 seconds



6 Occlusion control



Post-operative view

RESTORATIVE DENTISTRY



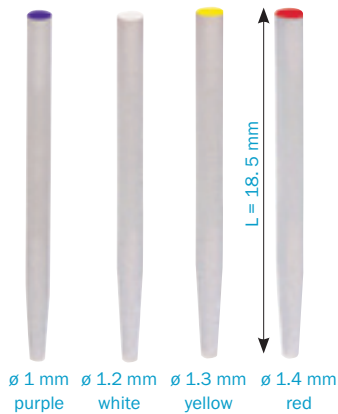
POST SYSTEM	12
RECONSTRUCTION	20
RESTORATION	24
BONDING/CEMENTATION	28
ENDODONTICS	40
IMPRESSION	44

GLASS FIBER-POSTS



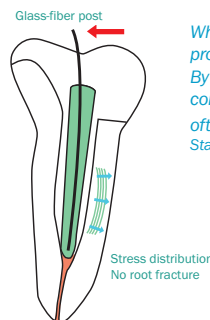
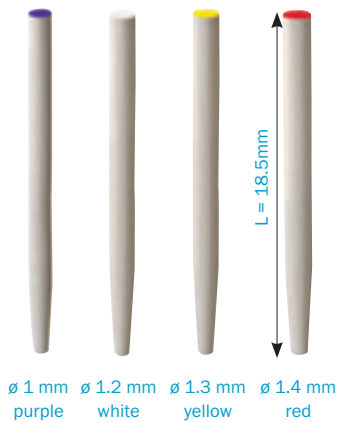
TRANSLUCENT GLASS-FIBER POSTS

- Aesthetic
- Allows polymerisation of the core build-up material on the entire post surface



IVORY GLASS-FIBER POSTS

- Enhanced radiopacity

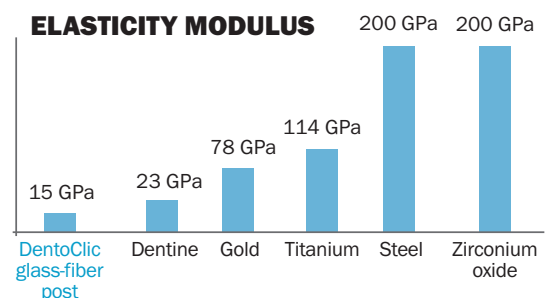


When teeth are restored using glass-fiber posts, problems are rare and often repairable. By contrast, teeth restored using metal posts commonly present more significant fractures, often resulting in the loss of the tooth.
 Standley, 1988 ; Freeman, 1998

ADVANTAGES

- Made of 80% unidirectional oriented glass-fiber embedded in 20% epoxy-resin.
- Mechanical and chemical retention thanks to the bond between the core build-up composite material and the glass-fiber post
- Elastic behaviour similar to dentin. A favourable relationship between tooth constraint and deformation, thanks to a homogeneous distribution of the mechanical constraints
- Perfect aesthetic
- **High radiopacity** (232% Al)
- **Biocompatible**
- No risk of corrosion or colouration
- Compatible with Dentoclic drills

ELASTICITY MODULUS





- 1 Select the glass-fiber post and matching drill using the calibrating gauge on the drill



- 2 Prepare the canal with a Gates or a Largo drill



- 3 Prepare the canal with the calibrated cylindro-conical drill



- 4 Try the glass-fiber post for size



- 5 Cut the post perpendicularly with a disc or a cutting plier. Store in alcohol until bonding



- 6 Apply the bonding (Iperbond Ultra or QuickBond) to the glass-fiber post and surfaces according to the instructions for use



- 7 Coat the post with core build-up (DentoCore/ DentoCore Body), then inject the core build-up into the canal. Fill a matrix with DentoCore/ DentoCore Body



- 8 Remove the matrix and shape

INDICATIONS

- Optimal aesthetic solution for prosthetic restorations
- Single ceramic restorations incorporating glass-fiber posts in the laboratory
- Corono-radicular restorations with glass-fiber post

Technical data

Flexural strength	857 MPa
Radiopacity	>3 mm Al

HINTS & TIPS

To increase the chemical bond between glass fiber and adhesive, apply Silane to the surface and dry thoroughly before applying adhesive.

How to remove a glass-fiber post

1. Remove the composite in order to gain access to the relevant post.
2. Make an initial hole at the location of the fiber post.
3. Use either a diamond-tipped, sonic or ultra-sonic insert without water, or a suitable drill, to delaminate the fiber and reveal the canal under the restoration.

References

Kit of 20 glass-fiber posts

Ivory (6 purple + 6 white + 4 yellow + 4 red) + 1 driver drill, 4 cylindro-conical reamers, 1 manual wrench, 1 gauge KFV020

Translucent (6 purple + 6 white + 4 yellow + 4 red) + 1 driver drill, 4 cylindro-conical reamers, 1 manual wrench, 1 gauge KFTV20

Refill packs of 5 glass-fiber posts

Ivory

ø 1 mm	●	FV0V5-1
ø 1.2 mm	○	FV0A5-1.2
ø 1.3 mm	●	FV0J5-1.3
ø 1.4 mm	●	FV0R5-1.4

Translucent

ø 1 mm	●	FVTV5-1
ø 1.2 mm	○	FVTA5-1.2
ø 1.3 mm	●	FVTJ5-1.3
ø 1.4 mm	●	FVTR5-1.4

In comparison to other systems such as post-and-core, the clinical value of this type of restoration lies in the ease of removal.

STEEL AND BURN-OUT POSTS



DENTOClic REPOSITIONING SYSTEM

The original DentoClic head imprints a double-dip shape in the impression material. It locks the post in place with a click and allows an ulterior repositioning if necessary.

CYLINDRO-CONICAL STAINLESS STEEL AND BURN-OUT POSTS

The burn-out post has a slightly smaller diameter than the steel post to compensate for the volumetric variations of materials used in the laboratory



References

20 cylindro-conical stainless steel posts refill

lg : 9.6 mm	ø 1.2 mm	○	DIA20-095
lg : 11.5 mm	ø 1.2 mm	○ L	DIAL20-114
lg : 9.6 mm	ø 1.3 mm	●	DIJ20-095
lg : 11.5 mm	ø 1.3 mm	● L	DIJL20-114
lg : 11.6 mm	ø 1.4 mm	●	DIR20-115
lg : 13.5 mm	ø 1.4 mm	● L	DIRL20-134
lg : 13.6 mm	ø 1.5 mm	●	DIB20-135
lg : 15.6 mm	ø 1.6 mm	●	DIV20-155
lg : 17.6 mm	ø 1.7 mm	●	DIN20-175

L = long length

40 cylindro-conical burn-out posts refill

lg : 9.6 mm	ø 1.15 mm	○	DCAA40-095
lg : 11.5 mm	ø 1.15 mm	○ L	DCAAL40-114
lg : 9.6 mm	ø 1.25 mm	●	DCAJ40-095
lg : 11.5 mm	ø 1.25 mm	● L	DCAJL40-114
lg : 11.6 mm	ø 1.35 mm	●	DCAR40-115
lg : 13.5 mm	ø 1.35 mm	● L	DCARL40-134
lg : 13.6 mm	ø 1.45 mm	●	DCAB40-135
lg : 15.6 mm	ø 1.55 mm	●	DCAV40-155
lg : 17.6 mm	ø 1.65 mm	●	DCAN40-175

L = long length

100 cylindro-conical burn-out posts refill

lg : 9.6 mm	ø 1.25 mm	●	DCAJ100095
lg : 11.6 mm	ø 1.35 mm	●	DCAR100115
lg : 13.6 mm	ø 1.45 mm	●	DCAB100135
lg : 15.6 mm	ø 1.55 mm	●	DCAV100155
lg : 17.6 mm	ø 1.65 mm	●	DCAN100175



CONICAL STAINLESS STEEL AND BURN-OUT POSTS

References

20 conical stainless steel posts refill

lg : 9 mm	ø 1.5 mm	●	CIJ20-09
lg : 11 mm	ø 1.7 mm	●	CI020-11
lg : 12 mm	ø 1.8 mm	●	CIV20-12
lg : 13 mm	ø 1.82 mm	●	CIR20-13
lg : 14 mm	ø 2 mm	●	CIB20-14
lg : 16 mm	ø 2.2 mm	●	CIV20-16

40 conical burn-out posts refill

lg : 9 mm	●	CCAJ40-09
lg : 11 mm	●	CCA040-11
lg : 12 mm	●	CCAV40-12
lg : 13 mm	●	CCAR40-13
lg : 14 mm	●	CCAB40-14
lg : 16 mm	●	CCAV40-16

100 conical burn-out posts refill

lg : 9 mm	●	CCAJ100-09
lg : 11 mm	●	CCA0100-11
lg : 12 mm	●	CCAV100-12
lg : 13 mm	●	CCAR100-13
lg : 14 mm	●	CCAB100-14
lg : 16 mm	●	CCAV100-16

Deep notch for optimum retention

2/3 cylindrical and 1/3 conical for an optimum fit with the physiological shape of the root canal



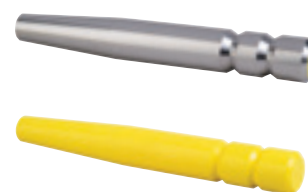
A '8 shape figure' head for a "double clicking" effect ensuring good imprint repositioning

STEEL:

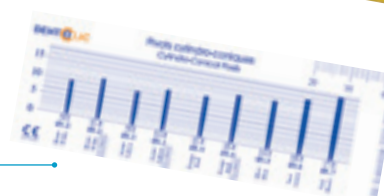
Stainless steel for medical use

PLASTIC:

Food grade polystyrene used. Intended for quick combustion with no waste



Calibrating gauge: match the post easily to the correct drill, thanks to the colour-coded system



CYLINDRO-CONICAL LOCKS



Ø (mm)	1.15	1.20	1.25	1.30	1.35	1.40	1.45	1.50	1.55	1.60	1.65	1.70
length (mm)	22	22	22	22	22	22	22	22	22	22	22	22

CONICAL LOCKS



Ø (mm)	1.75	1.80
length (mm)	23	23

References

10 cylindro-conical stainless steel lock refills

lg : 22 mm Ø 1.2 mm	○	DCLAIA-10
lg : 22 mm Ø 1.3 mm	●	DCLAIJ-10
lg : 22 mm Ø 1.4 mm	●	DCLAIR-10
lg : 22 mm Ø 1.5 mm	●	DCLAIB-10
lg : 22 mm Ø 1.6 mm	●	DCLAIV-10
lg : 22 mm Ø 1.7 mm	●	DCLAIN-10

20 cylindro-conical burn-out lock refills

lg : 22 mm Ø 1.15 mm	○	DCLACA-20
lg : 22 mm Ø 1.25 mm	●	DCLACJ-20
lg : 22 mm Ø 1.35 mm	●	DCLACR-20
lg : 22 mm Ø 1.45 mm	●	DCLACB-20
lg : 22 mm Ø 1.55 mm	●	DCLACV-20
lg : 22 mm Ø 1.65 mm	●	DCLACN-20

Conical lock refills

10 adaptable stainless steel locks, lg 23 mm, Ø 1.8	CCLAI10
20 adaptable burn-out locks, lg 23 mm, Ø 1.75	CCLACA20



Cylindro-conical prosthesis kit

KDLAB135

- 8 burn-out posts + 8 long burn-out posts + 3 burn-out locks
- 20 burn-out posts + 20 long burn-out posts + 5 burn-out locks
- 20 burn-out posts + 20 long burn-out posts + 5 burn-out locks
- 8 burn-out posts + 3 burn-out locks
- 6 burn-out posts + 2 burn-out locks
- 5 burn-out posts + 2 burn-out locks

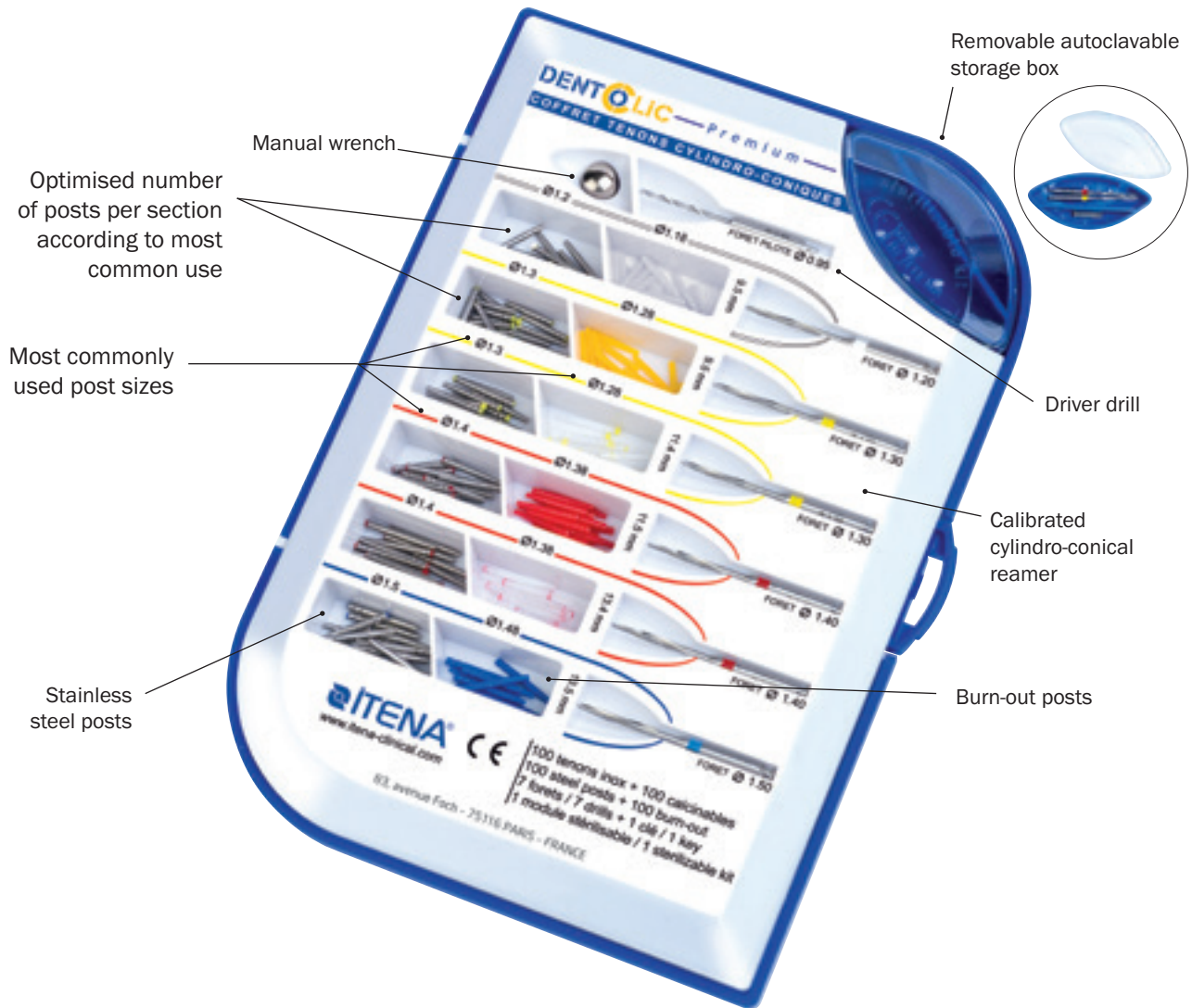


Conical prosthesis kit

KCLAB130

- 35 burn-out posts
- 35 burn-out posts
- 20 burn-out posts
- 15 burn-out posts
- 10 burn-out posts
- 5 burn-out posts
- 10 conical burn-out locks

OUR KITS



PREMIUM Kit

Cylindro-conical posts KPREMIUM

- 10 steel + 10 burn-out
- 20 steel + 20 burn-out
- 20 long steel + 20 long burn-out
- 20 steel + 20 burn-out
- 15 long steel + 15 long burn-out
- 15 steel + 15 burn-out
- 1 driver drill \varnothing 0.95 mm
- 6 cylindro-conical reamers ○ ● ● ● ● ●
- 1 manual wrench + 1 calibrated gauge



EXCELLENCE Kit

Cylindro-conical posts KEXCEL

- 10 steel + 10 burn-out
- 40 steel + 40 burn-out
- 40 steel + 40 burn-out
- 25 steel + 25 burn-out
- 8 steel + 8 burn-out
- 2 steel + 2 burn-out
- 1 driver drill \varnothing 0.95 mm
- 6 cylindro-conical reamers ○ ● ● ● ● ●
- 1 manual wrench + 1 calibrated gauge



CONICAL Kit

Conical posts KC-250

- 40 steel + 40 burn-out
- 40 steel + 40 burn-out
- 25 steel + 25 burn-out
- 10 steel + 10 burn-out
- 8 steel + 8 burn-out
- 2 steel + 2 burn-out
- 1 driver drill \varnothing 0.90 mm
- 2 cylindro-conical reamers n°1 ○ ○
- + 2 cylindro-conical reamers n°2 ● ●
- 1 manual wrench + 1 calibrated gauge



PERFORMANCE Kit

Cylindro-conical posts and Performance reamers KPERF-250

- 10 steel + 10 burn-out
- 40 steel + 40 burn-out
- 40 steel + 40 burn-out
- 25 steel + 25 burn-out
- 8 steel + 8 burn-out
- 2 steel + 2 burn-out
- 1 driver drill \varnothing 0.75mm
- 6 drills Performance reamers ○ ● ● ● ● ●
- 1 manual wrench + 1 calibrated gauge



SANDED TITANIUM CYLINDRO-CONICAL POSTS

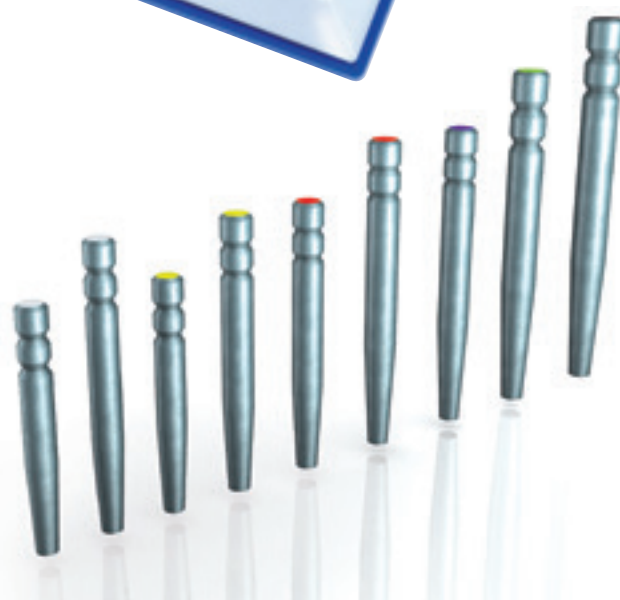


ADVANTAGES

- **Increased mechanical retention** due to the sand-blasted titanium surface
- Guaranteed **biocompatibility**
- Colour-coded by diameter of posts
- White, yellow and red in colour, with 2 different lengths per diameter
- DentoClic system cylindro-conical reamers included

DETAIL

- Direct restoration of posterior teeth



Technical data

- **Grade 5 titanium** conforms with the ISO 5832-3 and ASTM F136 standards (biocompatibility standards for surgical implant applications)
- **Arithmetic roughness** (Ra): 0.7 - 1 microns
- **Total roughness** (Rt): 7 - 10 microns

References

TITANIUM kit Sanded Titanium Posts

KTI-75

- 6 posts + 6 long posts
- 15 posts + 10 long posts
- 15 posts + 10 long posts
- 7 posts
- 3 posts
- 3 posts
- 1 driver drill \varnothing 0.95 mm
- 6 cylindro conical reamers ○ ● ● ● ● ●
- 1 manual wrench + 1 calibrated gauge

20 sanded titanium post refills

lg : 9.6 mm	\varnothing 1.2 mm	○	TIA20-0
lg : 11.5 mm	\varnothing 1.2 mm	○ L	TIAL20-00
lg : 9.6 mm	\varnothing 1.3 mm	●	TIJ20-1
lg : 11.5 mm	\varnothing 1.3 mm	● L	TIJL20-01
lg : 11.6 mm	\varnothing 1.4 mm	●	TIR20-2
lg : 13.5 mm	\varnothing 1.4 mm	● L	TIRL20-02
lg : 13.6 mm	\varnothing 1.5 mm	●	TIB20-3
lg : 15.6 mm	\varnothing 1.6 mm	●	TIV20-4
lg : 17.6 mm	\varnothing 1.7 mm	●	TIN20-5

L = long length

DRILLS AND REAMERS

CYLINDRO-CONICAL REAMERS

for shaping the canal to the dimensions of the cylindro-conical post. Moderate reaming with complete security

For use with:

- Stainless steel and burn-out posts
- Glass-fiber posts
- Titanium posts



References

Cylindro-conical reamer refill (x4)		
ø 1.0 mm	●	DFV4-010
ø 1.2 mm	○	DFA4-012
ø 1.3 mm	●	DFJ4-095
ø 1.4 mm	●	DFR4-115
ø 1.5 mm	●	DFB4-135
ø 1.6 mm	●	DFV4-155
ø 1.7 mm	●	DFN4-175

PERFORMANCE REAMERS

higher cutting capacity owing to its straight blades, sharp edges, working tip and high degree of sharpness

For use with:

- Stainless steel and burn-out posts
- Glass-fiber posts
- Titanium posts

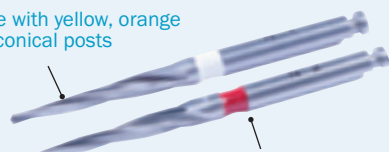


Performance reamer refill (x3)		
ø 1.2 mm	○	FPFA-1.2
ø 1.3 mm	●	FPFJ-1.3
ø 1.4 mm	●	PPFR-1.4
ø 1.5 mm	●	FPFB-1.5
ø 1.6 mm	●	FPFV-1.6
ø 1.7 mm	●	FPFN-1.7

CONICAL REAMERS

for reaming the canal to the dimensions of a conical post

For use with yellow, orange & red conical posts



For use with green, blue & purple conical posts

Conical reamer refill (x4)		
N°1	○	CF4-01
N°2	●	CF4-02
Mix 2 N°1 + 2 N°2		CF4-MIX

DRIVER DRILLS

for locating the canal axis in an endodontic treatment



Driver drill refill (x4)		
ø 0.75 - 1 groove		FP-075
ø 0.90 - 2 grooves		FP-090
ø 0.95 - 3 grooves		FP-095
ø 1.05 - 4 grooves		FP-105
ø mixed		FPASSORT

GATES DRILLS for enlarging the root canal opening



Gates drill refill (x6)		28 mm	Gates drill refill (x6)		32 mm
ø 0.50 - 1 groove	FG1-28		ø 0.50 - 1 groove	FG1-32	
ø 0.70 - 2 grooves	FG2-28		ø 0.70 - 2 grooves	FG2-32	
ø 0.90 - 3 grooves	FG3-28		ø 0.90 - 3 grooves	FG3-32	
ø 1.10 - 4 grooves	FG4-28		ø 1.10 - 4 grooves	FG4-32	
ø 1.30 - 5 grooves	FG5-28		ø 1.30 - 5 grooves	FG5-32	
ø 1.50 - 6 grooves	FG6-28		ø 1.50 - 6 grooves	FG6-32	
ø mixed	FGASSORT-28		ø mixed	FGASSORT-32	

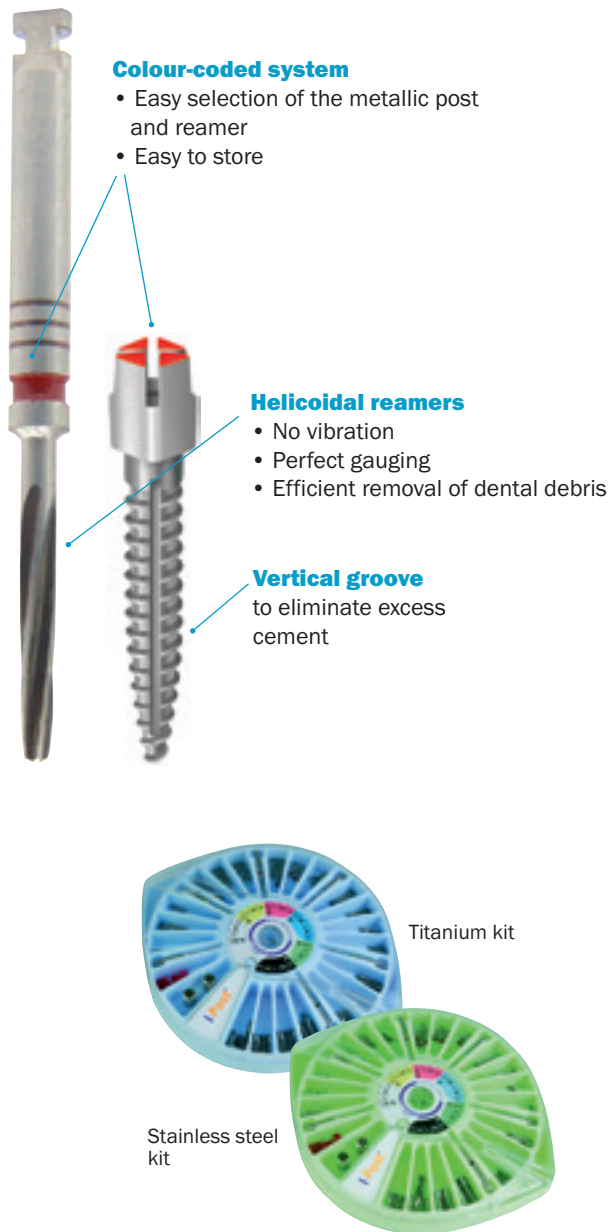
LARGO/PEESO DRILLS for enlarging the root canal walls



Largo drill refill (x6)		28 mm	Largo drill refill (x6)		32 mm
ø 0.70 - 1 groove	FL1-28		ø 0.70 - 1 groove	FL1-32	
ø 0.90 - 2 grooves	FL2-28		ø 0.90 - 2 grooves	FL2-32	
ø 1.10 - 3 grooves	FL3-28		ø 1.10 - 3 grooves	FL3-32	
ø 1.30 - 4 grooves	FL4-28		ø 1.30 - 4 grooves	FL4-32	
ø 1.50 - 5 rgrooves	FL5-28		ø 1.50 - 5 rgrooves	FL5-32	
ø 1.70 - 6 grooves	FL6-28		ø 1.70 - 6 grooves	FL6-32	
ø mixed	FLASSORT-28		ø mixed	FLASSORT-32	

I-POST

New generation of metallic posts in stainless steel or titanium



I-POST TITANIUM

Titanium Grade 4 conforms to the standards ISO5832-3 and ASTM F136 (biocompatibility standards for applications of surgical implants)

I-POST STAINLESS STEEL

Same stainless steel as used in surgical instruments or for food use, offering an ideal resistance against corrosion

The combined use of drill and I-Post is designed for a **passive use** to avoid all stress on the root after treatment

The morphology of the I-Post is designed to **respect the profile of the tooth root** (ogival end)

References

Metallic post kit	Stainless steel	Titanium
Kit of 120 metallic posts with reamers	KSPFIX-126	KSPFT-126



Kit of 120 metallic posts without reamers	KSPIX-120	KSPT-120
---	-----------	----------



Accessories

1 Square key	CLE-CARREE	
1 Cross-head key	CLE-CROIX	
20 Stops	BRSP-20	

Screw posts refills

		Stainless steel per 12	Titanium per 6
Length : 8 mm S	○ ø 1.05	SPIX-8.1A	SPT-8.1A
	● ø 1.20	SPIX-8.2J	SPT-8.2J
	● ø 1.35	SPIX-8.3R	SPT-8.3R
	● ø 1.50	SPIX-8.4B	SPT-8.4B
	● ø 1.65	SPIX-8.5V	SPT-8.5V
	● ø 1.80	SPIX-8.6N	SPT-8.6N
Length : 9.5 mm M	○ ø 1.05	SPIX-9.1A	SPT-9.1A
	● ø 1.20	SPIX-9.2J	SPT-9.2J
	● ø 1.35	SPIX-9.3R	SPT-9.3R
	● ø 1.50	SPIX-9.4B	SPT-9.4B
	● ø 1.65	SPIX-9.5V	SPT-9.5V
	● ø 1.80	SPIX-9.6N	SPT-9.6N
Length : 12 mm L	○ ø 1.05	SPIX-12.1A	SPT-12.1A
	● ø 1.20	SPIX-12.2J	SPT-12.2J
	● ø 1.35	SPIX-12.3R	SPT-12.3R
	● ø 1.50	SPIX-12.4B	SPT-12.4B
	● ø 1.65	SPIX-12.5V	SPT-12.5V
	● ø 1.80	SPIX-12.6N	SPT-12.6N
Length : 14 mm XL	● ø 1.50	SPIX-14.4B	SPT-14.4B
	● ø 1.80	SPIX-14.6N	SPT-14.6N

Drills for screw-posts ITENA	Short	Long
Box of 3 drills ○	FSPC-1A	FSPL-1A
Box of 3 drills ●	FSPC-2J	FSPL-2J
Box of 3 drills ●	FSPC-3R	FSPL-3R
Box of 3 drills ●	FSPC-4B	FSPL-4B
Box of 3 drills ●	FSPC-5V	FSPL-5V
Box of 3 drills ●	FSPC-6N	FSPL-6N
Box of 6 assorted drills ○●●●●●	FSPC-assort	FSPL-assort

DENTOCORE

Body

Core build-up and post cementation composite material

ADVANTAGES

Dual polymerisation (self- and light-curing)

- Curing guaranteed, even in the areas which are unreachable with the LED curing unit light.
- Elastic phase allows an easy removal of excess material

Based on hyperbranched polymers technology

Enhanced mechanical properties of conventional Bis-GMA composite

Excellent radiopacity

Excellent compressive strength for long-lasting restorations

Low polymerisation shrinkage

Better marginal adaptation

Automix syringe



Firm consistency for easier handling without condensation

INDICATIONS

- Core build-up
- Cementation of glass-fiber post

Technical data Body

Compressive strength	250 MPa
Linear shrinkage	1.2%
Flexural strength	200 MPa
Diametral tensile strength	40 MPa
Water absorption	2 µg/mm ³
Working time	1 min 30 - 3 min 30
Auto setting time	2 min 30 - 4 min 30
Radiopacity	400 % AI

References DentoCore Body

DentoCore Body A3 shade

- 1 x 50 g cartridge
- + 25 mixing tips
- + 25 intra-oral tipsDCBODY-50

DentoCore Body Automix

- 1 x 5 ml syringe A3
- + 10 mixing tips
- + 10 fine intra-oral tips
- + 10 extra-fine intra-oral tipsDABODY1-10

DentoCore Body Automix - Value Pack

- 3 x 5 ml syringes A3
- + 30 mixing tips
- + 30 fine intra-oral tips
- + 30 extra-fine intra-oral tipsDABODY3-VP

Fine intra-oral mixing tips

- Refill of 25 mixing tips + 25 intra-oral tips DTA

- Dispensing Gun for Cartridge.....DCP

DENTOCORE



Excellent viscosity balance (not too viscous not too liquid) for a better penetration in cracks

References DentoCore

DentoCore Automix

1 x 5 ml syringe A3
+ 10 mixing tips
+ 10 fine intra-oral tips
+ 10 extra-fine intra-oral tips DCSAK1

DentoCore Cartridge

DentoCore White shade

1 x 50 g cartridge
+ 25 mixing tips
+ 25 intra-oral tips DCB-50

DentoCore A3 shade

1 x 50 g cartridge
+ 25 mixing tips
+ 25 intra-oral tips DCA3-50

MATRICES

ADVANTAGES

- Use with composite, glass ionomer cements, pattern acrylic
- Fit the natural anatomy of the tooth
- Available in several sizes
- **Light-curable**
- Conical, for a better result



ø (mm)

HINTS AND TIPS

For easy removal of the matrix once the core has been cured, make a hole in the top of the matrix with a dental scaler. Pass the scaler through the hole underneath the surface of the matrix.

This action will release the air-seal between the matrix and the restoration and will ensure the matrix comes off easily.

References

10 matrix kit

ø 4 mm	MCA10-4
ø 6 mm	MCA10-6
ø 7 mm	MCA10-7
ø 8 mm	MCA10-8
ø 10 mm	MCA10-10
ø 12 mm	MCA10-12

Matrix kit

36 cones of 6 different diameters	MCAC36
---	--------



CORONO-RADICULAR RESTORATION KIT

Direct restoration with glass-fiber posts

ADVANTAGES

- **All materials and accessories in one kit** for any glass-fiber post restoration
- **Guaranteed compatibility**
- Clinical procedure approved by the foremost French universities
- **Assured success** for any corono-radicular restoration

Illustrated clinical procedure

DENTOCLIC translucent glass-fiber post kit

- 20 cylindro-conical posts
- 6 purple Ø1 mm,
- 6 white Ø1.2 mm,
- 4 yellow Ø1.3 mm,
- 4 red Ø1.4 mm
- + 4 DentoClic matching reamers
- + 1 driver drill
- + 1 manual wrench
- + 1 gauge

Core build-up DENTOCORE BODY

- 5ml syringe shade A3
- + 10 mixing tips
- + 5 fine intra-oral tips
- + 5 extra-fine intra-oral tips

Kit of 36 matrices

of various diameters

Silane SILANEA

- 1.2ml syringe
- + 3 needle tips

Etching gel DENTOETCH

- 2 syringes (1.2ml)
- + 6 tips

IPERBOND ULTRA adhesive 5ml bottle

- + **IPERBOND ULTRA ACTIVATOR** chemo-activator 3ml bottle
- + 50 conical micro-applicators
- + 1 mixing pad

Reference

Itena Kit MARED

For further information, please refer to:

- Glass-fiber posts, page 12
- Iperbond Ultra, page 28
- DentoCore Body, page 20



1 Select the appropriate glass-fiber post and matching drill



2 Prepare the canal with a Gates or a Largo drill



3 Prepare the canal with the calibrated cylindro-conical drill



4 Try the glass-fiber post for size.



5 The post is cut perpendicularly with a disc or a cutting plier. Store the post in alcohol until bonding



6 Etch the canal and the coronary part for 10 sec. Rinse 15 sec and dry



7 Apply silane onto the glass-fiber post and dry



8 Mix equal quantities of Iperbond Ultra and Iperbond Ultra Activator



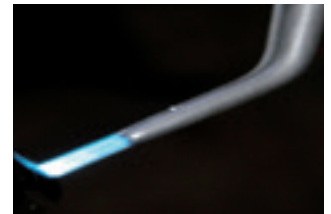
9 Apply the mixture to the glass-fiber post and dry carefully



10 Spread the mixture for 20 sec. Dry for 5 sec



11 Apply a second layer, spreading for 5 sec. Dry for 5 sec



12 Light-cure the surfaces and the glass-fiber post for 20 sec



13 Coat the post with DentoCore Body, then inject DentoCore Body into the canal



14 Place the post into the canal



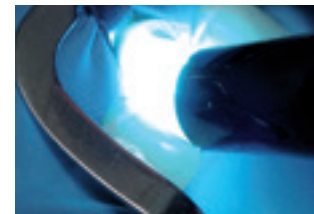
15 Select a matrix. Adapt the height and the edges. Make a hole in the matrix



16 Fill it with DentoCore Body



17 Replace the matrix



18 Light-cure for 5 sec and clean off the excess mixture. Light-cure for 20 sec



19 The matrix is removed and the shape is made



20 Post-operative view

HINTS AND TIPS

For thorough cleaning of the root canal, use Irrigatys (p. 40) after cleaning with EDTA.

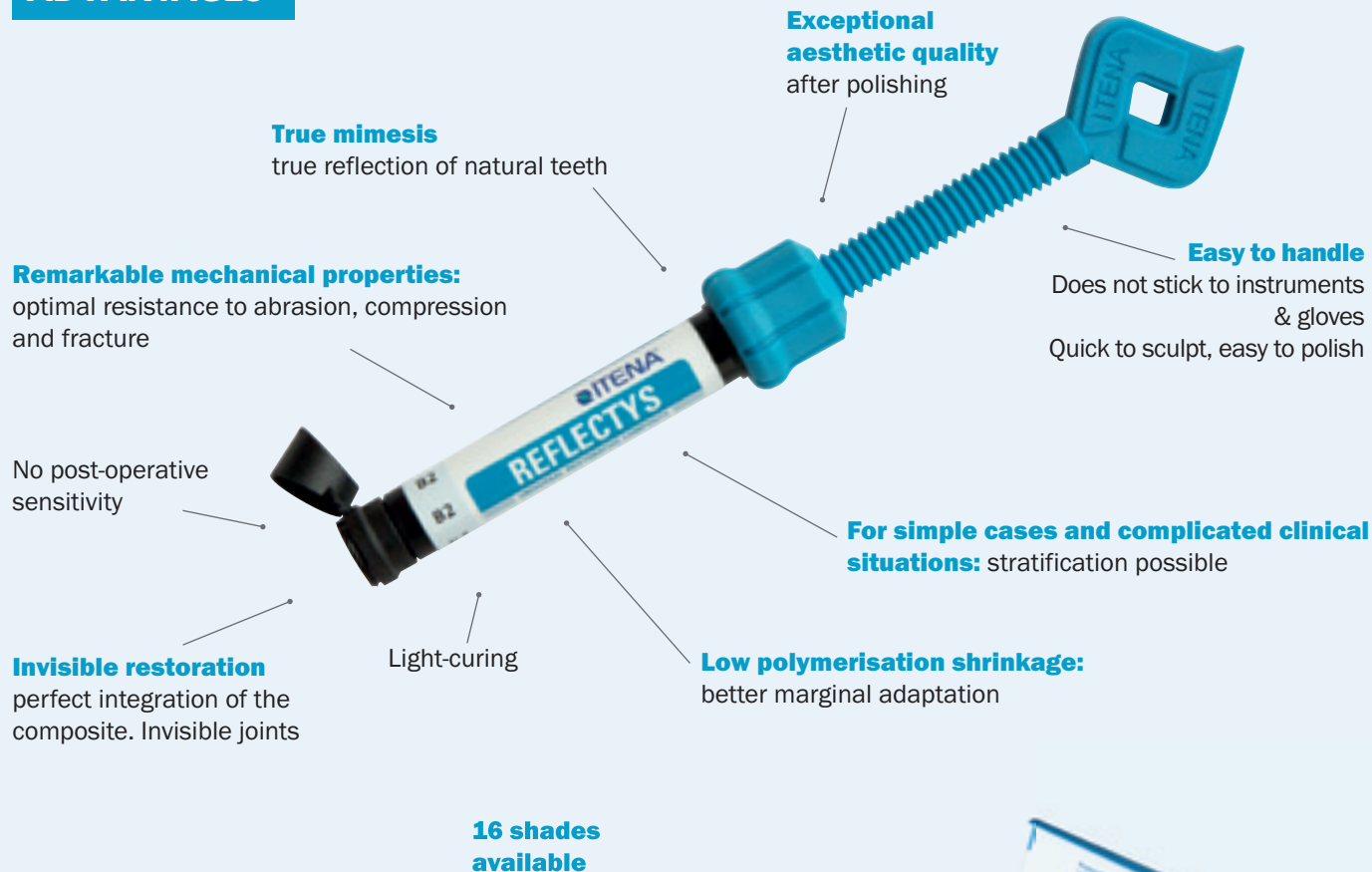
In cases where extensive loss of tooth tissue may lead to bonding difficulties, consider post-and-core or indirect-method coronoradicular glass-fiber. Speak to your dental technician.

REFLECTYS



Anterior and posterior universal composite

ADVANTAGES



INDICATIONS

Restoration of both posterior teeth with important mastication constraints and anterior teeth which need a high-level aesthetic finish

- All classes (I to V)
- Shape and colour corrections
- Fractured teeth
- Restoration of milk teeth

Technical data

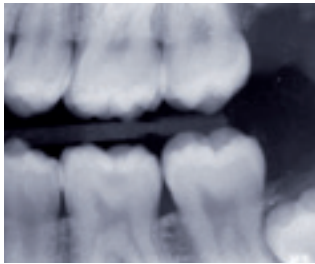
Layer - Advised curing time 20s (LED)	2,95 mm
Compressive strength	307 MPa
Flexural strength	164 MPa
Film thickness	8.2 µm
Absorption	23.1 µg/mm ³
Water solubility	39.3 µg/mm ³
Shrinkage rate	2.20 %
Radiopacity	220 %



Syringe or capsule

4g syringe
0.25g capsule





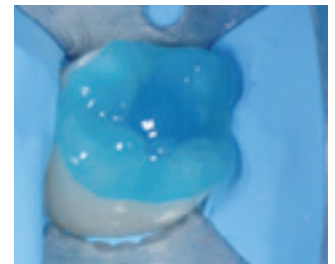
1 Cavity X-ray on the 36.



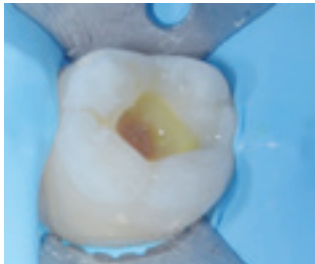
2 Initial situation before treatment. Occlusal cavity on the first left lower molar.



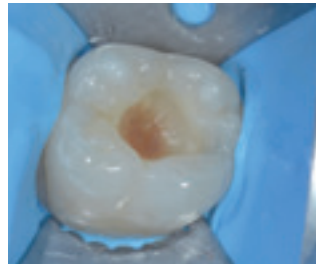
3 Treatment of the cavity



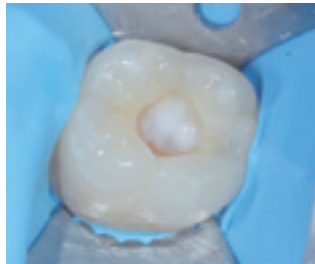
4 Etching in the enamel for 30 s and on the dentine with DENTOETCH for 15 sec.



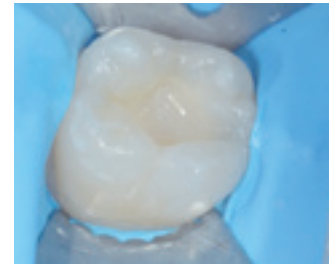
5 Rinse for 15 sec and dry the cavity until the surface appears white and chalky.



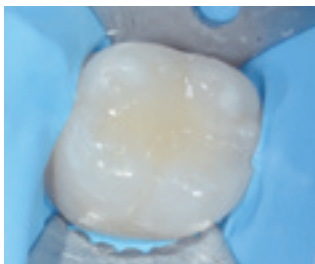
6 Application of the bonding Iperbond Ultra for 20 sec. Then soft air spray for 5 sec. Repeat the operation a second time. Light-curing for 20 sec + 20 sec.



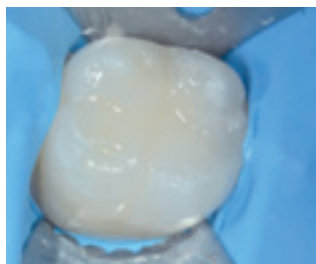
7 Application of a thin layer of IONOCEM (Ionomer cement): sandwich technique.



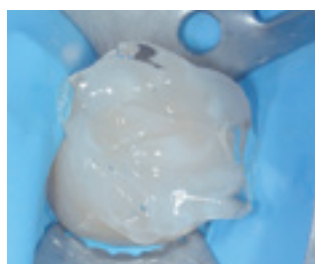
8 Application of a layer of Reflectys Flow A3. Light-curing for 20 sec.



9 Two application of Reflectys shade A2. Light-curing during 20 sec each time.



10 Application of Reflectys Enamel shade in thin layer. Light-curing for 20 sec.



11 Glycerin layer and light-curing for 20 sec.



12 Result after treatment and complete rehydration.

References

	1 syringe (4g) + 1 spatula	20 capsules (0.25g)
A1	SRTYS-A1	CPTY-S-A1
A2	SRTYS-A2	CPTY-S-A2
A3	SRTYS-A3	CPTY-S-A3
A3.5	SRTYS-A3.5	CPTY-S-A3.5
A4	SRTYS-A4	CPTY-S-A4
B1	SRTYS-B1	CPTY-S-B1
B2	SRTYS-B2	CPTY-S-B2
B3	SRTYS-B3	CPTY-S-B3
C2	SRTYS-C2	CPTY-S-C2
C3	SRTYS-C3	CPTY-S-C3
D3	SRTYS-D3	CPTY-S-D3

Shade for stratification

Enamel	SRTYS-E	CPTY-S-E
Incisal	SRTYS-I	CPTY-S-I
Pedo	SRTYS-P	CPTY-S-P
Opaque A2	SRTYS-A20	CPTY-S-A20
Opaque A3	SRTYS-A30	CPTY-S-A30

Reflectys Kits

Restoration kit

for everyday restorations
4 Reflectys syringes (A2, A3, A3.5, B2)
+ 1 bonding Iperbond Ultra KTYS-4.1B

Stratification kit

for the most delicate and aesthetic cases
7 Reflectys syringes (A1, A2, A3, Opaque A2, Opaque A3, Enamel, Incisal)
+ 1 bonding Iperbond Ultra
+ 1 etching gel DentoEtch KTYS-7.2BE

REFLECTYS FLOW

Universal fluid composite

ADVANTAGES



INDICATIONS

- Filling of minor invasive treatments with or without carious lesions
- Surface fillings of Class I, III and V
- Sandwich technique combines layers of high viscosity composite materials
- Marginal repairs to current composite fillings or inlays
- Cementation of retainers
- Reinforcement of teeth after traumatic event or with weakened periodontium

HINTS & TIPS

Ensure a better seal during the placing of a composite!

After filling undercut areas with the Flow, insert a layer of non-polymerised flow composite before starting the setting process. When the composite is tamped, the flow will rise up the tooth walls, ensuring a better seal.

Technical data

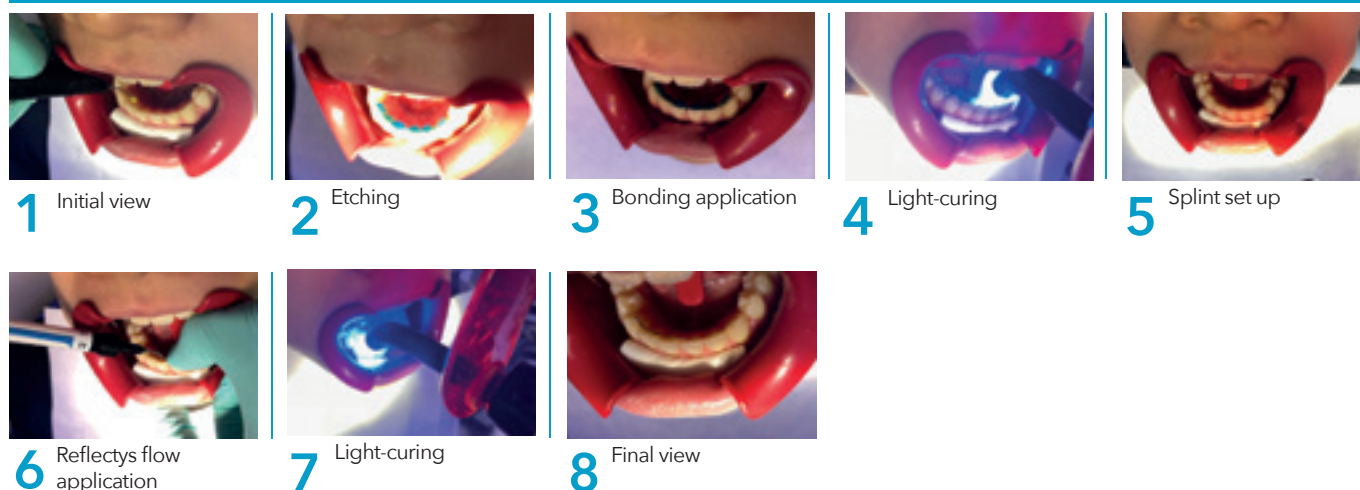
Layer - Advised curing time 20 sec (LED)	2 mm
Depth of curve	2.54 mm
Compressive strength	250 MPa
Flexural strength	120 MPa
Shrinkage rate	3.70%

References

2g syringe + 10 tips ø 0.9 mm

A1	FWTYS-A1
A2	FWTYS-A2
A3	FWTYS-A3
A3.5	FWTYS-A3.5
B2	FWTYS-B2
B3	FWTYS-B3

FIXING A BRACE



CHEEK RETRACTOR

Fully adjustable cheek-retractor providing a wide operating field

Adjustable to fit any mouth

One size fits all

Excellent access to anterior and posterior teeth

Autoclavable up to 134° C

Ideal for fitting brackets or veneers; for whitening, descaling or restorations



References

Set of 2 panoramic cheek retractorsEJP-2BT

IPERBOND ULTRA

Universal adhesive

ADVANTAGES



INNOVATION
PATENTED
FORMULA

Excellent results: **reliable**
adhesion to enamel and dentine

Reduced risk of post-
operative sensitivity

Low evaporation: no acetone
solvent for better consistency

Excellent bonding
results for clinical cases
including prepared enamel
or dentine and indirect
restoration

Quick to apply: **only one coat** in self-etch mode
Reduces the risk of human error

Very thin interface to prevent
microleakage

Iperbond Ultra
becomes **self-curing**
when mixed
with **IPERBOND**
ULTRA ACTIVATOR

Excellent marginal adaptation to
both enamel and dentin

Helps to prevent the formation of bacterial biofilm



HINTS & TIPS

Ideal for pediatric cases and in cases of pulpal proximity without reactive dentine

References

Iperbond Ultra

5 ml bottle IPBDUL-5

Micro-applicators

Blue conical ACB-50

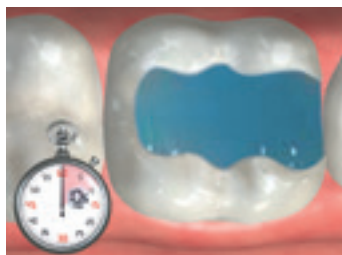
Green conical ACV-50

Spherical ASR-50

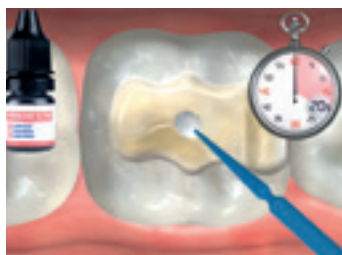
Bonding Strength

	On enamel	On dentine
Total-Etch mode	30.9 MPa	29.1 MPa
Self-Etch mode	27.6 MPa	27.9 MPa

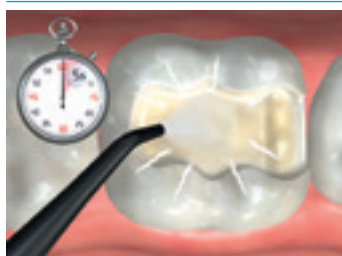
PROTOCOL



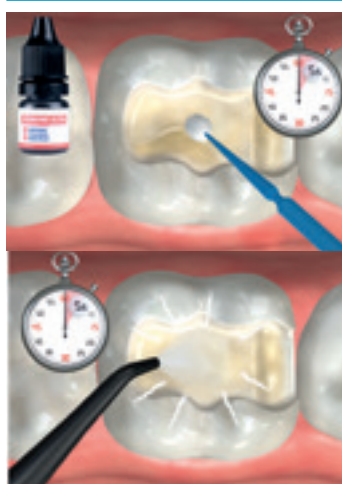
- 1 (Optional) Etch enamel and/or dentine for 10 sec max. Rinse for 15 sec



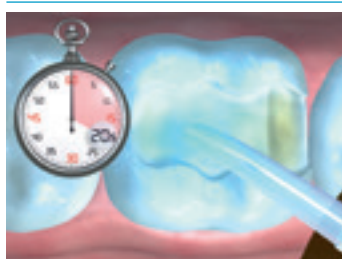
- 2 Apply Iperbond Ultra and distribute evenly for 20 sec



- 3 Air-dry for 5 sec



- 4 (with previous etching) Apply the mixture for a second time for 5 sec then air-dry for 5 sec



- 5 Light-cure for 20 sec



For areas which are unreachable with a LED curing unit, mix equal quantities of Iperbond Ultra and Iperbond Ultra Activator. Proceed with steps 2, 3, 4.

IPERBOND ULTRA ACTIVATOR

Chemical activator for Iperbond ultra

ADVANTAGES

- Makes Iperbond Ultra **self-curing**
- Ideal for areas that are unreachable with a LED curing unit
- Ideal for glass-fiber post bonding



Reference

Iperbond Ultra Activator

3 ml bottle IPBACTUL-3

QUICKBOND

2 step self-etching bonding system (SAM2)

ADVANTAGES



INDICATIONS

- **Composite restorations** with direct technique
- **Bonding of all filling materials**, dual-core build-up, compomers, resin cements, crowns, bridges, inlays and onlays
- **Large posteriors restorations** using DentoEtch to etch the uneven margins (p.33)

References

QuickBond Kit

10 ml of Prime "A", 10 ml of Bond "B"	
+ 1 mixing pad	
+ 50 blue micro-applicators	
+ 50 green micro-applicators.....	DBQAK

QuickBond Prime «A»

10 ml bottle	DBQAP-10
--------------------	----------

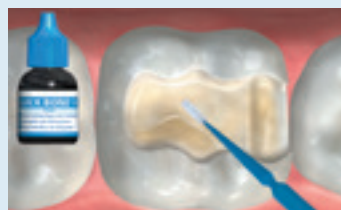
QuickBond Prime «B»

10 ml bottle	DBQAB-10
--------------------	----------

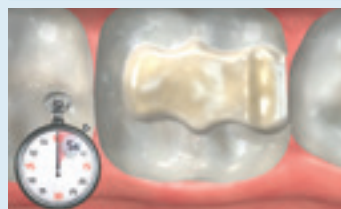
Micro-applicators

50 blue conical micro-applicators	ACB-50
50 green conical micro-applicators	ACV-50
50 spherical micro-applicators	ASR-50

PROTOCOL



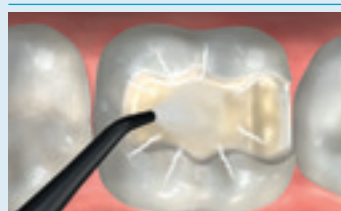
- 1 Apply 3 successive layers of **QuickBond PRIME** on the tooth surface



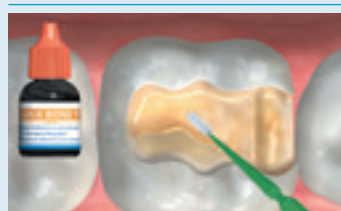
- 2 Let stand for 5 sec



- 3 Remove solvents with a gentle spray of air



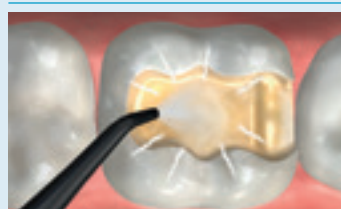
- 4 Air-dry strongly



- 5 Apply 2 successive coats of **QuickBond BOND**



- 6 Remove solvents with a gentle spray of air



- 7 Air-dry strongly



- 8 Light-cure for 20 sec

For the bonding of self-curing or dual composites or for areas which are unreachable with a LED curing unit, combine equal drops of **BOND ACTIVATOR** with **QuickBond BOND** on a mixing pad, mix for 2 sec and proceed with steps 5, 6 and 7



BOND ACTIVATOR

Chemical activator for QuickBond

ADVANTAGES

- Ideal for areas which are unreachable with a LED curing unit
- Ideal for glass-fiber post bonding



Reference

Bond Activator

Bottle of 7 ml..... DBAC-7

C-RAM BOOSTER

Primer for ceramics

ADVANTAGES

Repair of metal-ceramic or ceramic crowns, veneers, inlays-onlays in ceramic

Primer for all ceramic surfaces

No sandblasting, no etching needed



Can be used on **zirconia, porcelain, glass ceramics and metal ceramics**

Ideal surface coverage

MAIN STRENGTH :

Considerably improves adhesion between ceramic surfaces and resin materials

Reference

C-Ram Booster

5 ml Bottle CRAMBST5

DETAILS/USE

- Preparation of ceramic crowns, veneers and inlays prior to cementation
- Preparation of fractured ceramic restorations for repair with resin material

PROTOCOL

- 1 Pre-operative view of a fractured ceramics bridge

Clean the surface with alcohol or acetone and dry

Brush & alcohol + 20 sec



- 2 Open the **C-Ram Booster** bottle and put 1 or 2 drops on a mixing pad. Close the bottle immediately.

- 3 Apply **C-Ram Booster** generously to the ceramic surfaces using a micro-brush

Brush & C-Ram Booster

- 4 Wait 2 min and air-dry 20s

- 5 **OPTION** : For complex fractures, apply our adhesive Iperbond Ultra

- 6 Repair the bridge with our composite Reflectys

- 7 Post-operative view of the repaired bridge



SILAN-IT

Silane

Silane **is a cross-linking agent used to improve adhesion**



ADVANTAGES

- Silan-it reacts with mineral surfaces (such as glass or ceramic) via a condensation reaction
- Silan-it also reacts with organic polymer surfaces (such as epoxy resin, polyester resin or methacrylate resin) initiating an additional reaction and/or copolymerization by reacting with terminal chemical groups and bonding with free radicals
- Silanization improves **adhesion and resistance to hydrolysis**
- Silanization increases **mechanical resistance**

References

Silan-it

5 ml BottleSILAN-IT

DENTOETCH

37% phosphoric acid etching gel

ADVANTAGES

Tips can be angled to enable easy and accurate placement of the gel even in distal and lingual preparations

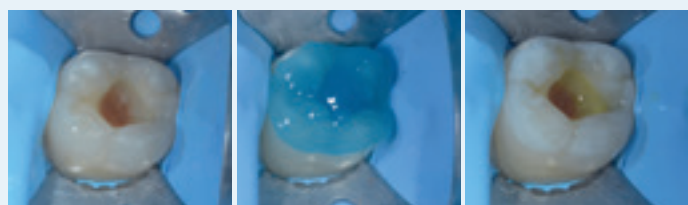
Economic packaging with filling syringes

Perfect consistency: not too viscous, not too liquid

Stays in place, does not leak

Washes off quickly and easily

Easy-to-use syringe with disposable tips



Initial view

DentoEtch application

Result of etching

References

Etching gel

4 x 1.2 ml syringes + 8 needle tips	DE-4.12
1 x 50 ml syringe + 5 empty 1.2 ml syringes	DETC-VP

DentoEtch tips

20 needle tips	DEA-20
----------------------	--------

CERAM-ETCH

9% buffered hydrofluoric acid gel



References

Ceram Etch

2 x 1.2 ml syringes + 4 tips	CRAM-ETCH
------------------------------------	-----------

ADVANTAGES

- Preparation of fractured ceramics or metal ceramics
- Preparation of ceramic crowns, veneers and inlay surfaces prior to cementation
- Etching ceramics of all types to make a micro-porous surface which gives a strong mechanical interlock with composite resin materials
- Stays in place

Technical data

Hydrofluoric acid	9%
Water	90%
Thickening agent.....	1%

PROVITEMP

Short term temporary cement

ADVANTAGES

- **Easy to use**
- **Eugenol free**
Resin-based formula for a better compatibility with permanent cement
- **Resistant to deformation** from chewing
- Perfectly watertight cementation
- **Dentine shade** for a perfect aesthetic result
- No exothermic reaction
- Contains **fluorides**
- Radiopaque
- **Easy excess removal**, no residues
- **Very easy clean-up** of the temporary prosthesis after removal



INDICATION

Temporary cement for

- Crowns & bridges
- Inlays & onlays
- Temporary trials of permanent restorations

References

ProviTemp Automix syringe

5 ml syringe + 10 mixing tips PTEMP1-10

ProviTemp mixing tips

20 mixing tips for Automix syringe DTEM-20

PROTOCOL



1 Inject ProviTemp into the temporary restoration: Working time 1.5-3.5 mins



2 Set the restoration and hold firmly in place. Initial gel setting occurs between 1.5-2 min after placement



3 Remove the excess. Final setting: 2.5-3 mins

DENTOTEMP

Long term temporary cement designed for implants

ADVANTAGES

- **Ideal for implants**
- **Eugenol free.** No interference with permanent cements
- **High bonding strength**, but **easy removal**
- Leaves **perfectly healthy gingiva** after removal of the temporary crown
- It comes off in one block without leaving debris when the temporary crown or prosthesis is removed. Huge time saving compared with other cements
- **Rebasing and cementation** in one stage
- Can be used on **living teeth**
- **Thin film** (10 µm) high aesthetic result
- Radiopaque
- Self-cure

INDICATIONS

- **For temporary cementation** in case of:
 - A small retention area
 - A long-term trial
- **Permanent cementation** of implant-retained crowns

HINTS & TIPS

- DentoTemp can be mixed with a small amount of vaseline to reduce its retentive properties
- A Furrer plier is particularly well suited for the removal of temporary elements
- DentoTemp binds to the inside of the temporary crown.
- Resealing the temporary element is easy with the addition of extra DentoTemp
- For a temporary cementation on a composite restored tooth, isolate the core



Manual syringes

References

DentoTemp manual syringes

2x10ml syringes (base+catalyst)
+ 10 spatulas + 1 mixing padDT-2.10

DentoTemp automix syringe

2 x 5 ml syringe + 20 mixing tipsDTCA2-20

DentoTemp automix syringe Intro Kit

5 ml syringe + 5 mixing tips DTCA1-5

DentoTemp automix syringe Value Pack

4 x 5 ml syringe + 40 mixing tips DTCA4-VP

DentoTemp mixing tips

20 mixing tips DTEM-20

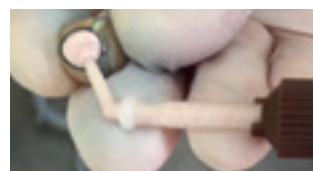
PROTOCOL



1 Initial view



2 Insert Teflon to isolate the screw head before the crown is put in place



3 Inject into intrados



4 Exert pressure on the crown



5 Remove the excess



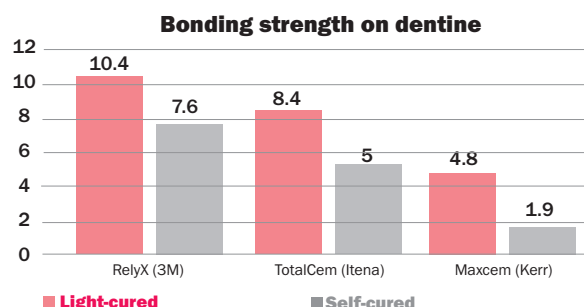
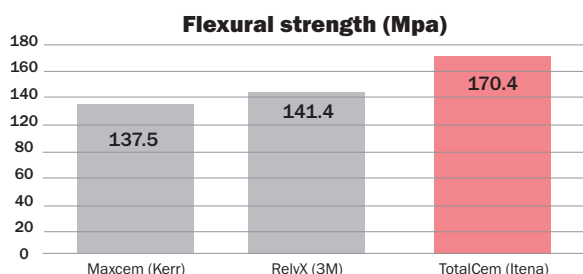
6 Final view

TOTALCEM

Self-etching and self-adhesive permanent resin cement Special for metal

ADVANTAGES

- **All in one:**
Etching + Bonding + Cement
- Exceptional bonding strength
- Dual cure (Light- or self-cure)
- Guaranteed curing in areas with limited light penetration
- Optimised gel state for easy removal of excess: simply cure for 3-4s
- No post-operative sensitivity
- **Thin film (10 µm)**
- Not soluble in oral fluids
- Perfect seal
- Can be used on living teeth
- Long term shade stability
- Refrigerate for longer shelf life



INDICATIONS

- **For cementation of:** crowns, bridges, posts, inlays & onlays
- **Self-adhesive on:** enamel, dentine, metal

Technical data

Compressive strength:	180 MPa
Water sorption:	12 µg/mm ³
Solubility:	7 µg/mm ³
Film thickness:	10 µm
Radiopacity, % Aluminium:	250
Fluor release (cumulative on 14 days):	589 ppm
Working time:	1.5 to 3.5 min
Setting time:	2.5 to 4.5 min
Compatible with all lamps:	Yes

References

TotalCem translucent

Syringe of 8g + 10 mixing tips + 10 fine intra-oral tips
+ 10 extra-fine intra-oral tipsTTLCEM-TR

TotalCem A2 universal

Syringe of 8g + 10 mixing tips + 10 fine intra-oral tips
+ 10 extra-fine intra-oral tips TTLCEM-A2

TotalCem TR - Value Pack

3 Translucent syringes of 8g + 30 mixing tips + 30 fine intra-oral tips
+ 30 extra-fine intra-oral tipsTCEM3-VPTR

TotalCem A2 - Value Pack

3 A2 syringes of 8g 30 mixing tips + 30 fine intra-oral tips + 30 extra-fine intra-oral tipsTCEM3-VPA2

Tips

25 mixing tips + 25 fine intra-oral tipsDCEX-50

Extra-Fine Tips

25 mixing tips + 25 extra-fine intra-oral tips DCEXF-50

Ultra-Fine Colibri Tips

10 flexible and ultra-fine tips DCCOL-10

TOTAL C-RAM

Self-etching and self-adhesive permanent resin cement Special for ceramics

ADVANTAGES

- **All in one:** Etching + primer + bonding + cement
- Exceptional bonding strength
- Dual curing (light- or self-cure)
- Optimised gel state for delete easy excess removal: simply cure 2s
- Recommended for cementation of veneers thanks to the extremely thin film (10 µm)
- Not soluble in oral fluids
- Perfect seal
- Radiopaque 250% Al
- Can be used on living teeth
- Long term shade stability
- Refrigerate for longer shelf life

A choice of 3 shades to meet the needs of all clinical cases:

Opaque-dentin

Similar to the dentin color with opacity properties for optimal coverage

Translucent

Very high translucency for a cementation without any shading effect on the restoration

White

Has opaque properties and is designed for veneers. Also recommended for covering up grey metallic parts, e.g., under the crown

INDICATIONS

- **Cementation of :** crowns, bridges, inlays, onlays, veneers, posts
- **Self-adhesive** on enamel, dentin, metal, ceramics, zirconia, porcelaine

PROTOCOL

Dr Pascal Zyman case



1 Initial view



2 Wax up



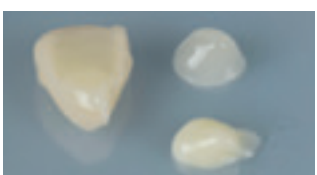
3 Realisation of lithium disilicate veneers



4 Application of hydrofluoric acid for 20 sec then rinse



5 Application of silane



6 Application of TotalC-Ram opaque-dentine shade on cervical and median zones and translucent shade on incisal merge



7 Final view



References

Total C-Ram translucent

8 g Automix syringe translucent + 10 mixing tips + 10 fine intra-oral tips + 10 extra-fine intra-oral tips..... TTCRAM-TR

Total C-Ram opaque

8 g Automix syringe translucent + 10 mixing tips + 10 fine intra-oral tips + 10 extra-fine intra-oral tips..... TTCRAM-OD

Total C-Ram white

8 g Automix syringe translucent + 10 mixing tips + 10 fine intra-oral tips + 10 extra-fine intra-oral tips..... TTCRAM-BLC

DENTOCEM

Permanent resin cement

ADVANTAGES

■ No initial expansion

- Superior retention and total margin integrity
- Film thickness gives a perfect aesthetic result

■ Dual Cure Self- and light-curing

- Ideal for areas which are unreachable with the LED curing unit
- Cement has a rubbery phase to allow removal of excess material

■ Radiopaque (250%)

■ Automix syringe and extra-fine intra-oral tips



INDICATIONS

- Crowns, bridges, inlays, onlays, posts, ceramic crowns & Maryland bridges
- Ceramics or metallic orthodontic attachments
- Use on all substrates

References

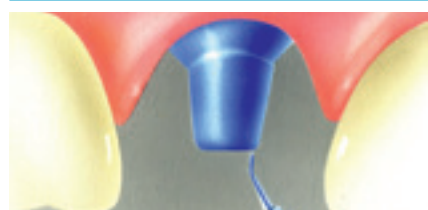
DentoCem

2 x 5ml syringes + 10 mixing tips + 10 extra-fine intra-oral tips DCA-2.5

extra-fine tips

25 mixing tips + 25 extra-fine intra-oral tips DCEXXF-50

PROTOCOL



- 1** (Optional) Etch the tooth for 5-10 sec
Rinse and dry



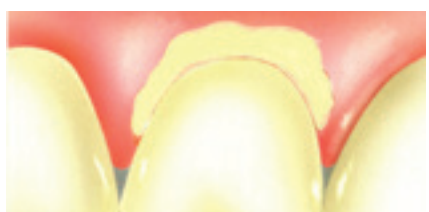
- 2** Mix equal quantities of Iperbond Ultra and Iperbond Ultra Activator



- 3** Apply the mixture for 20 sec. Dry for 5 sec (if prior etching was carried out, re-apply a second coat for 5 sec), then dry for 5 sec
Light-cure for 20 sec



- 4** Apply a thin layer of DentoCem directly into the restoration



- 5** Set the restoration in place. Briefly light-cure for 3-4 sec. The excess cement, having taken on a rubbery consistency, can be easily removed with a probe



- 6** For self-curing, the setting time is between 2min30 and 4 min 30.

IONOCEM

Self-curing glass ionomer cement

ADVANTAGES

- Excellent **resistance** to saliva
- Good compressive strength
- **Fluoride release**

INDICATIONS

- Definitive sealing of inlays, onlays, crowns, bridges & orthodontic brackets
- Dental cement base
- Filling of temporary teeth



Reference

IonoCem

16g powder + 10 ml liquid + 1 spoon + 1 mixing pad DCI

YOUR CEMENTATION GUIDE



TOOTH PREPARATION



QUICK BOND 2-step self-adhesive

- 2-step bonding system : 1 self-etching primer and 1 light-cured bonding agent
- Excellent and reliable adhesion to enamel and dentine
- Think about Bond Activator for areas which are unreachable with a LED curing unit



IPERBOND ULTRA Universal adhesive

- Quick to apply
- Excellent and reliable adhesion to enamel and dentine
- Think about Iperbond Ultra Activator for areas which are unreachable with a LED curing unit



PROSTHETIC ELEMENT PREPARATION

TOTAL C-RAM

Self-etching and self-adhesive cement

- Formulated for ceramics and zirconia elements
- Dual cure



DENTOCEM

Cement without adhesive properties

- Use on all substrates (metal, ceramics, zirconia) with a preparation before
- Dual-cure



TOTALCEM

Self-etching and self-adhesive cement

- Formulated for metal elements
- Dual cure



C-RAM BOOSTER

Primer for ceramics and zirconia

- No etching needed
- Increase the adhesion between resins and ceramics materials



Root canal cleaning and disinfection system

ADVANTAGES

The only system that can provide both irrigation and activation of the solution for perfect cleaning

Ambidextrous

Buttons on both sides of the hand-piece for an easy handling

Button to provide irrigation

Button to agitate the solution

System can be used in all directions (maxillary and mandibular teeth) without any risk of disabling the pump

2 bases available:

- charging base
- working base

«THE FIRST DEVICE WHICH ASSOCIATES IRRIGATION AND ACTIVATION OF THE SOLUTION IN THE ROOT CANAL »

Prof. S. Simon

A tip for both irrigation and activation, specific for Irrygatys

2 sizes:

- 15 mm, 27G
- 21 mm, 27G

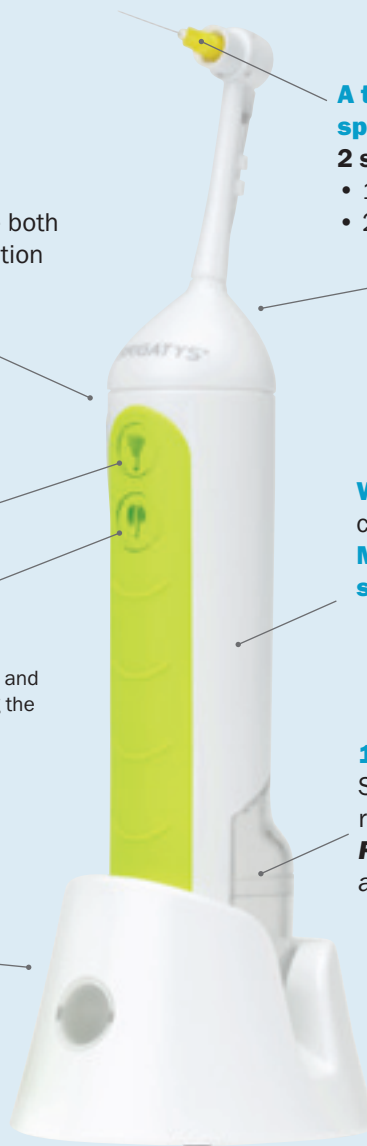
Visible and easily replaceable irrigation line

Wireless handpiece for a more comfortable working
Much more ergonomic than a syringe!

1 dedicated tank for each solution:

Sodium Hypochlorite, EDTA and water rinsing

Removable tank, easily filled with adapted bottles



DETAILS

- Irrigation & cleaning of root canal system for any treatment or retreatment

Reference

Introduction kit:

- 1 IRRIGATYS Handpiece + charging stand + power supply
- Chair mounted base
- 1 black tinted tank for Hypochlorite
- 1 transparent tank for EDTA
- 1 blue tank for water rinsing
- 10 IRRIGATYS sterile needle tips 5 x 15 mm and 5 x 21 mm (diam 0.4 mm - 27G)
- 5 irrigation lines
- 10 hygienic plastic protective covers for the handpiece
- 1 FR / ENG instructions for use..... KIRGTYS

Technical Data

Average flow of the solutionbetween 8 and 10 ml/min.
Oscillation angle 30° (+/- 5°)
Oscillation frequency 3100/min (+/- 200)
Between 10 & 15 operating cycles* on a new battery
*Cycle: 1 min for hypochlorite - 1 min for EDTA - 1 min for hypochlorite
Gauge tip27G
Removable tank 30 ml

Refill:

IRRIGA FILL: translucent tank for EDTA..... IRFIL-EDTA
IRRIGA FILL: black tinted tank for Hypochlorite.....IRFIL-HY PO
IRRIGA FILL: blue tank for waterIRFIL-H2O
IRRIGA SOL: bottle of 50 ml for Hypochlorite + tip (black cap)IRSL-HY50
IRRIGA SOL: bottle of 50 ml for EDTA + tip (white cap)IRSL-ED50
IRRIGA SOL: bottle of 50 ml for water + tip (blue cap)IRSL-O50
IRRIGA TIP: 25 blue tips - 15 mm - Ø 0.4 mmIRTIP-B15
IRRIGA TIP: 25 yellow tips - 21 mm - Ø 0.4 mmIRTIP-J21
IRRIGA LINE: 5 irrigation lines..... IRLINE-5
IRRIGA PROTECT: box of 100 hygienic plastic protective covers for handpiece IRTIP-D100

MTA BIOREP

NEW

Bioceramic reparative cement

ADVANTAGES

Restoration of cementum and bone tissue

Decreases the proliferation of bacteria (bacteriostatic)

Optimal remineralization

Ideal consistency (putty like)

Does not discolour teeth (last generation opacifier)

Radiopaque

Resistance to fluids infiltration

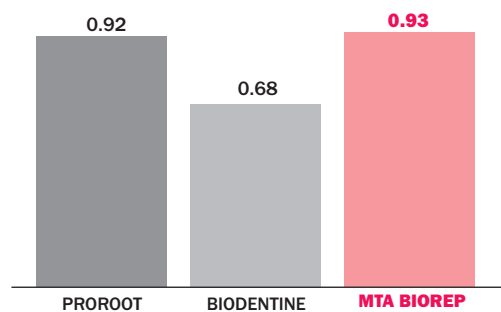


INDICATIONS

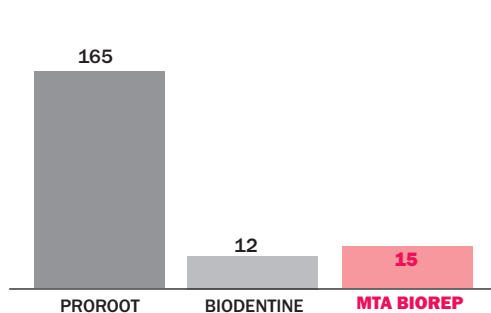
- Repair cement to be used before root canal filling.
- Ideal in cases of pulp capping on permanent teeth, canal perforation, pulpotomy, internal resorption and apexification.

A single dose that dispenses the right amount of liquid for a homogeneous mixture.
2 mixing modes: manual or automatic.

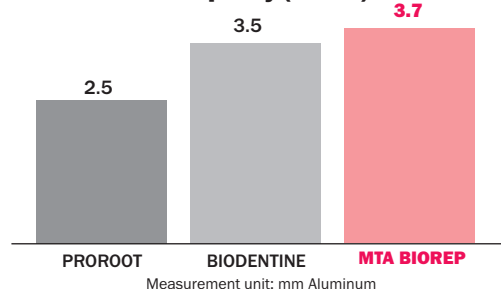
Release of Ca²⁺ ions (ppm)



Initial setting time (min)



Radiopacity (mm Al)



Reference

MTA BIOREP

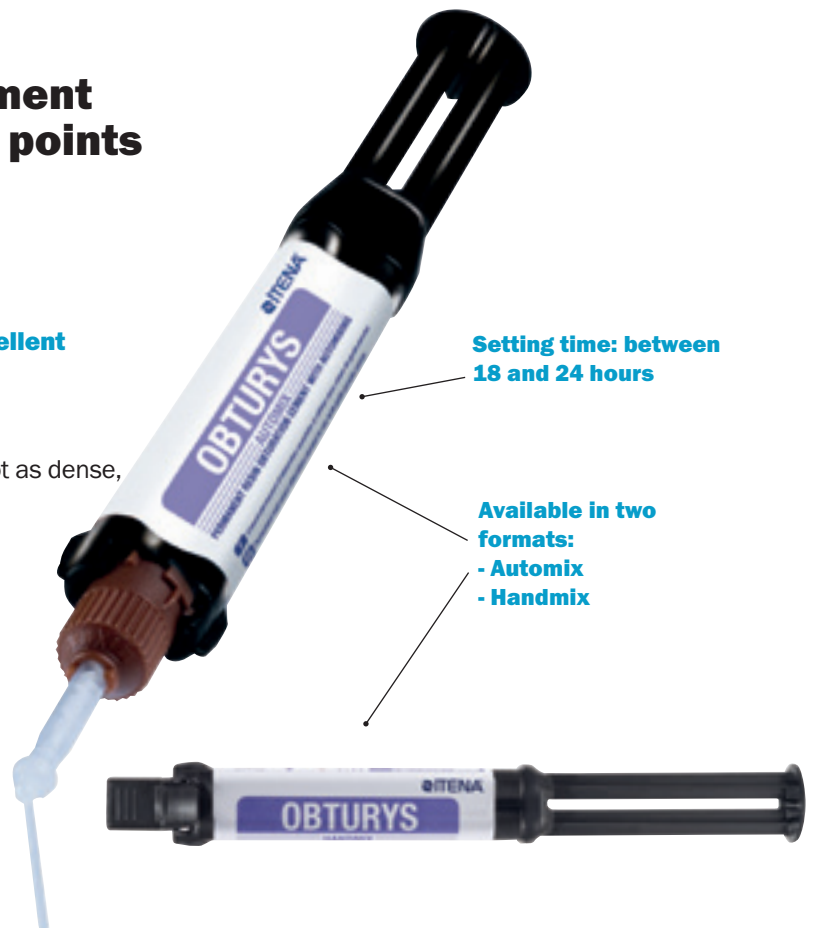
- Bioceramic root canal repair cement 2 caps.....MTA-BRP2.2
- Bioceramic root canal repair cement 5 caps.....MTA-BRP5.5

OBTURYS

Permanent root canal cement for use with gutta-percha points (epoxy-amine resin-based)

ADVANTAGES

- **Ideal consistency** for easy placement and **excellent support around gutta percha points**
- Perfect sealing for successful clinical cases
- **Easy to remove any excess**
- Easier reinterventions because the material is not as dense, but still as resistant
- **Excellent user comfort**



DETAILS

- Permanent sealing of root canals, for use with gutta-percha points

References

Handmix

Handmix syringe 5 ml + 1 manual adapter + 10 mixing spatulas
+ 1 mixing padOBHM1-5

Automix

Automix syringe 5 ml + 10 mixing tips + 10 intra-oral tips
+ 1 mixing pad OBAX1-5

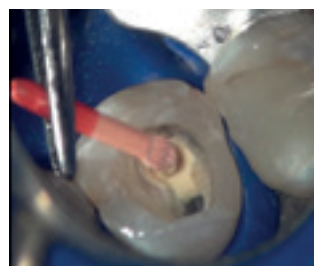
PROTOCOL



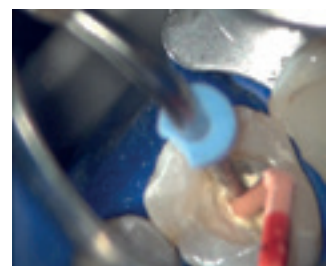
Initial radiography



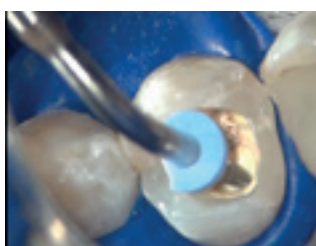
- 1** Cover the apical third of the gutta percha point with Obturys.



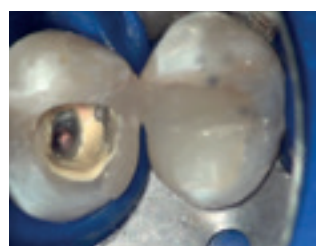
- 2** Cover the inside of the root canal with Obturys using the gutta percha. Make vertical movements.



- 3** Using the probe, cut the excessive gutta percha outside the canal.



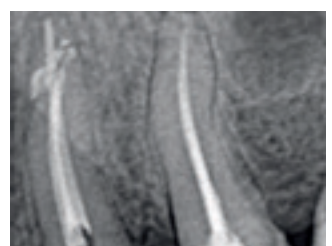
- 4** Hot vertical condensation of the gutta percha.



- 5** Obturation of the apical third.



- 6** Filling two thirds of the coronal section with the hot gutta by injection.



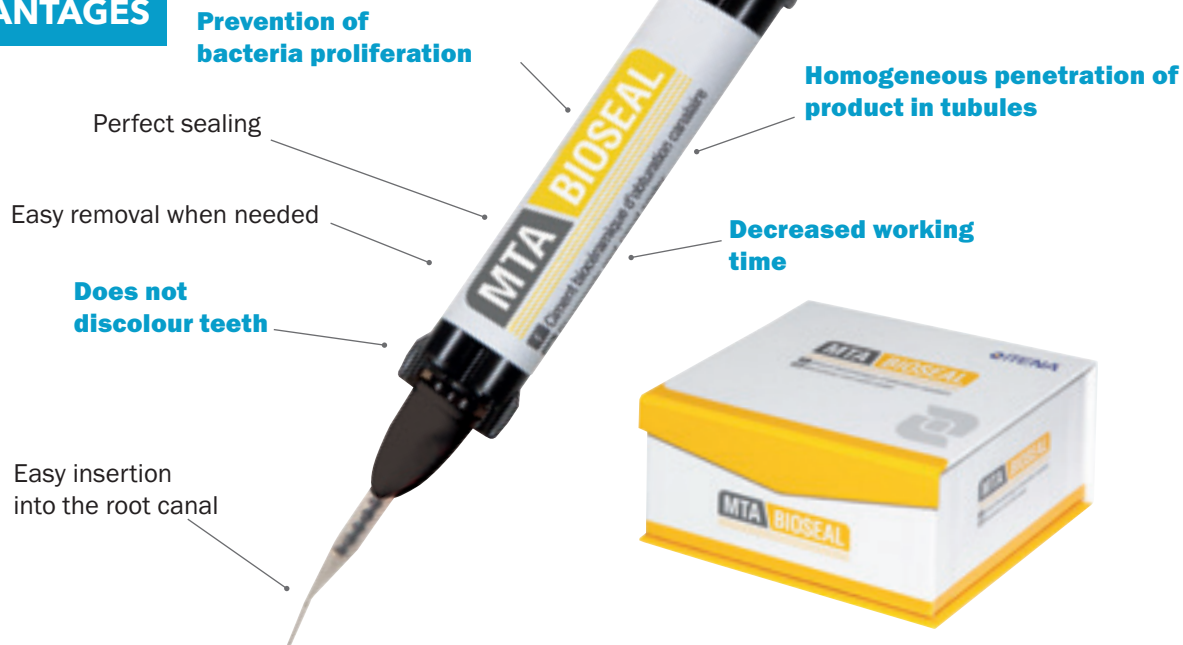
- 7** Final X-ray. Thorough inspection.

MTA BIOSEAL

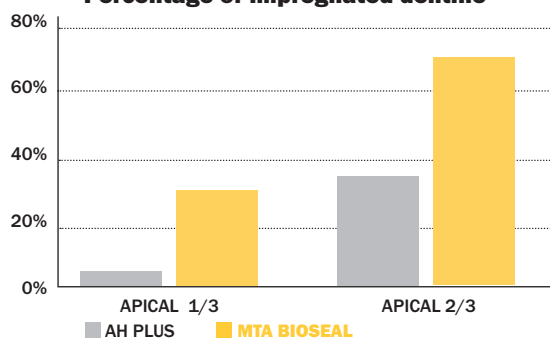
NEW

Endodontic root canal sealer with MTA

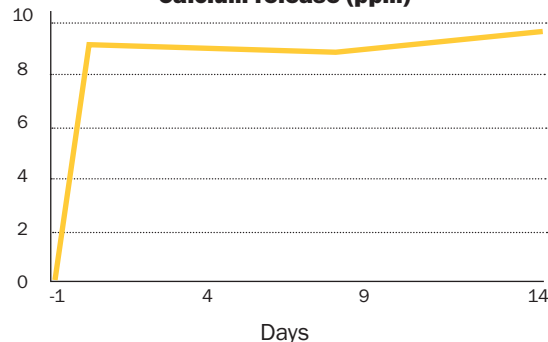
ADVANTAGES



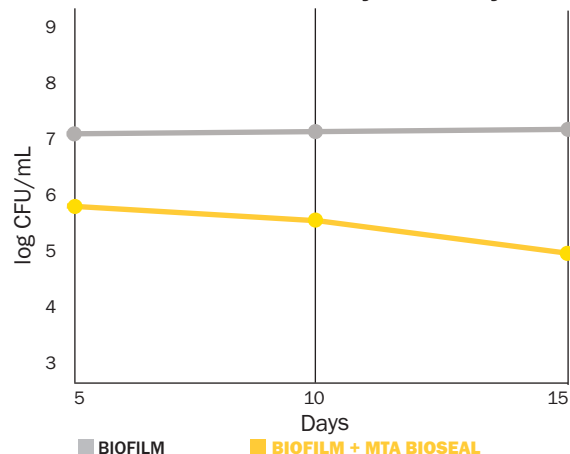
Percentage of impregnated dentine



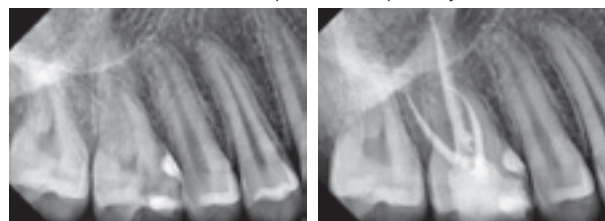
Calcium release (ppm)



Bacteriostatic activity after 7 days



photos and captions by Dr Patrick Feldstein



Reference

MTA BIOSEAL

MTA Bioseal syringe (4g) + 10 mixing tips + 1 mixing pad ...MTA-BSEAL

HYDROSPEED^{HD}

High precision silicon impression material

ADVANTAGES

High resistance to tearing

Exceptional elastic properties creating a high resistance for detachment

PATENTED FORMULA
**NATURALLY
HYDROPHILIC**

Designed to exceed the mechanical constraints (sulcus)

Bubble-free paste

Excellent hydrophilic nature

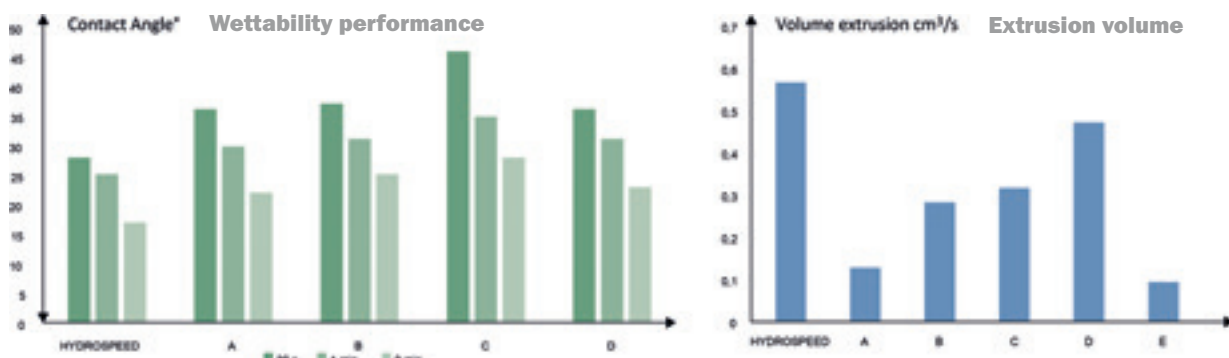
Ultra-precise recording of details in a humid environment



Simple and fast extrusion with the cartridge

DETAILS

- VPS Silicone for high precision impression
- Compatible with all impression techniques (1-step technique or 2-step technique)



ICON SYSTEM FOR EASY IDENTIFICATION OF THE PRODUCTS:

Mixing type



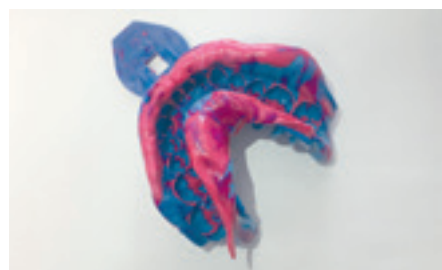
Flow



Intra-oral time



IMPRESSION CASE



Type	Product	Packaging	Reference	Viscosity	Hardness	Setting time	Mixing type
Light	HYDROSPEEDHD Light Body	2x 1:1 / 50 ml + 12 mixing tips	HYD-BL	Light		Normal	Gun
	HYDROSPEEDHD Light Body Quick	2x 1:1 / 50 ml + 12 mixing tips	HYD-BLQ	Light		Fast	Gun
	HYDROSPEEDHD Regular Body	2 x 1:1 / 50 ml + 12 mixing tips	HYD-BR	Regular		Normal	Gun
	HYDROSPEEDHD Regular Body Quick	2 x 1:1 / 50 ml + 12 mixing tips	HYD-BQR	Regular		Fast	Gun
Body	HYDROSPEEDHD Magnum Body Heavy	1 x 5:1 / 380 ml	HYDM-BH	Heavy		Normal	Machine
	HYDROSPEEDHD Magnum Body Heavy Quick	1 x 5:1 / 380 ml	HYDM-BHQ	Heavy		Fast	Machine
Putty	HYDROSPEEDHD Putty Soft	300 ml base + 300 ml catalyst + 2 measuring spoons	HYD-PS		Soft	Normal	Handmix
	HYDROSPEEDHD Putty Soft Quick	300 ml base + 300 ml catalyst + 2 measuring spoons	HYD-PSQ		Soft	Fast	Handmix
	HYDROSPEEDHD Putty Hard	300 ml base + 300 ml catalyst + 2 measuring spoons	HYD-PH		Hard	Normal	Handmix
	HYDROSPEEDHD Putty Hard Quick	300 ml base + 300 ml catalyst + 2 measuring spoons	HYD-PHQ		Hard	Fast	Handmix
	HYDROSPEEDHD Magnum Putty Hard	1 x 5:1 / 380 ml	HYDM-PH		Hard	Normal	Machine
	HYDROSPEEDHD Magnum Putty Hard Quick	1 x 5:1 / 380 ml	HYDM-PHQ		Hard	Fast	Machine

ACCESSORIES

MIXING GUN

- Better ergonomics
- Precise and effortless silicone extrusion
- Simplified insertion of cartridges
- Compatible with 50ml cartridges 1:1
- Can be used in autoclave (134°C / 273°F)



1 Insertion (irrespective of the direction of the cartridge)



2 Rotation



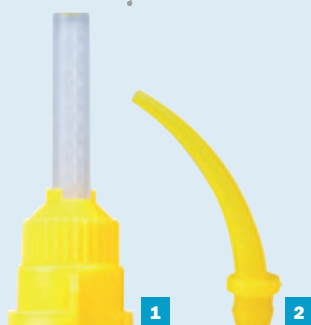
3 Insertion of the tip



4 Fastening the tip

Tips for application of light impression materials

Intraoral mouthpiece to attach to the mixing tip



Fits all magnum references

References

Accessories

- | | |
|--|----------|
| 1 50 yellow ECO mixing tips | HY-TY50 |
| 2 100 yellow intra-oral tips | HY-TY100 |
| 3 50 yellow mixing cannulas + clamping clip | HYM-TY50 |

HYDROSPEED^{HD}

Bite registration



TIPS

Homogeneous two-component mixture

Tips for bite registration

Brush tip to fix on the mixing tip



References

Bite registration: 2 x 1:1 / 50 ml + 6 mixing tips
+ 6 intra-oral tips HYD-REG

Accessories

- 1** Mixing gun 50 ml 1:1 / 2:1 HY-GSII
- 2** 100 transparent intra-oral tips for bite registration HY-TG100
- 3** 50 green ECO mixing tips HY-TG50

CHROMASPEED

High precision chromatic alginate

ADVANTAGES

Mint or strawberry flavor.
No excess salivation

High precision

Only 30 seconds in mouth

High dimensional stability

Recommended for **orthodontics**

Optimized elasticity for removal **without deformation**

Recommended for **general dental practitioners**

Spoon and measure cup are included to **guarantee the stability of the mixture**

DETAILS

Alginate for:

- general dental practitioners: **Chromaspeed HD**
- orthodontists: **Chromaspeed ORTHO**

References

Chromaspeed^{HD}

CHROMASPEED ORTHO - 500 g bag

+ measurement kitCHSP-O

CHROMASPEED HD - 500 g bag

+ measurement kitCHSP-HD

Specific colour for each work step

Clear and easy to use

Optimum mix



Mouth contact



Removal

Green: ortho / Yellow: HD



Only 30 seconds in mouth

TRAXODENT

Dual action: haemostatic and gingival retraction paste

ADVANTAGES

Fast and effective retraction in 2 minutes

The chemio-mechanical expansion of Traxodent allows tissue displacement on contact with air

Optimised haemostatis

Use of Traxodent stops bleeding through compression whilst absorbing gingival fluid

Swivel and adaptable tips

Injection angle easily determined

Paste with a malleable consistency

Very easy and quick to apply, rinse off and clean

Ergonomic syringe

0.7g (5 applications on average)

Retracap

Compression caps for better penetration into the sulcus

Resealable foil pouches

The paste does not dry out and keeps extremely well

COMPOSITION

Patented formula containing:

- Clay matrix
- 15% Aluminum Chloride



A compression cap or similar device can be used for optimal penetration of the Traxodent into the sulcus. After the application of the Traxodent in the sulcus, place the compression cap on the tooth and ask the patient to bite down. Let it act for 2 minutes and rinse.



An instrument aids for penetration of Traxodent into the sulcus.

DETAILS

Use before:

- Taking an impression
- Clinical procedure requiring haemostasis or gingival deflection

References

Traxodent Packs

2 syringes (0.7 g each) + 6 needle tips	
+ compression caps	TRASTRT-2
7 syringes (0.7 g each) + 15 needle tips	
+ compression caps	TRABOI-7
25 syringes (0.7 g each) + 50 needle tips	
+ compression caps	TRAPACK-25

Tips refill

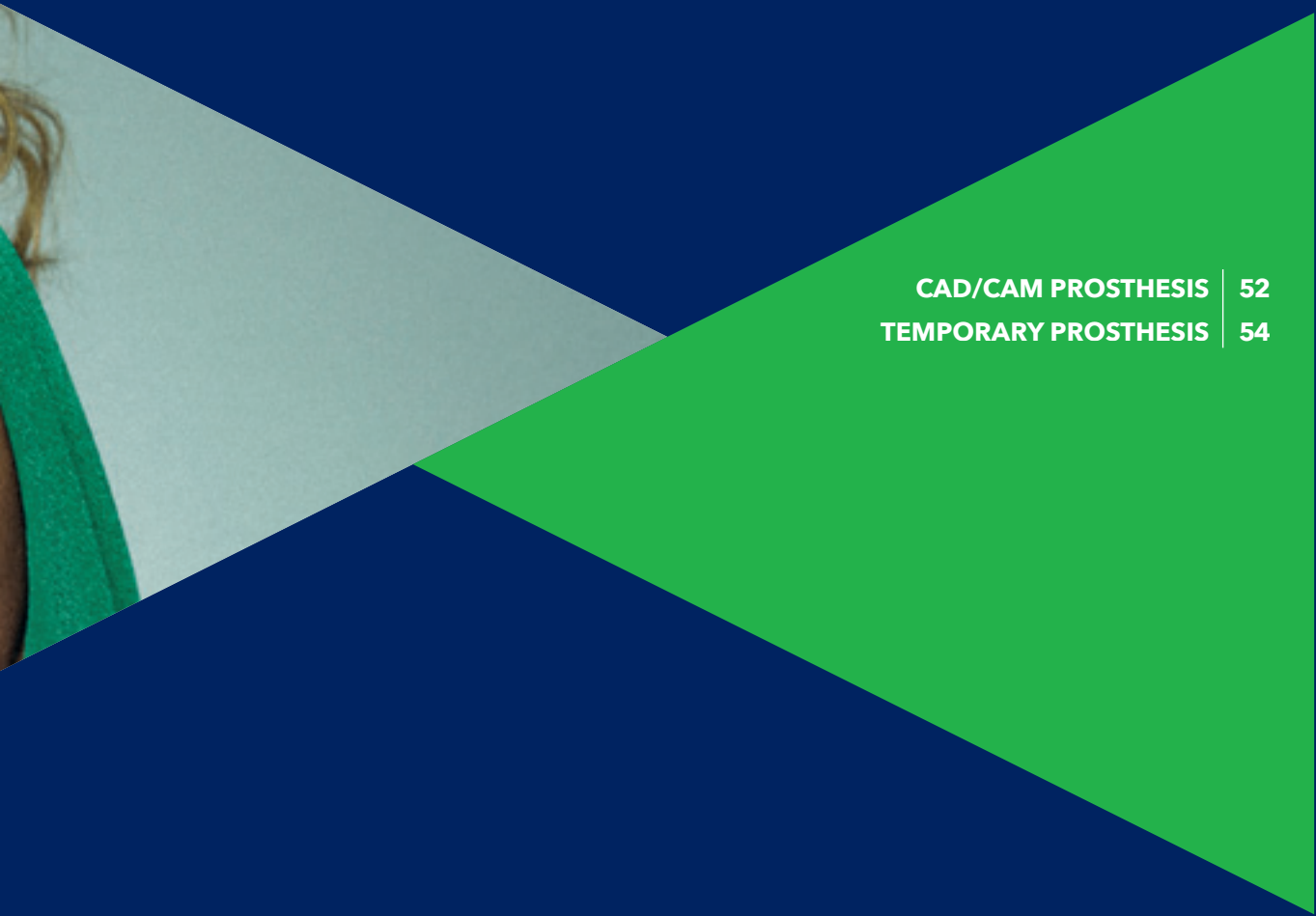
20 needle tips	TRAEMB-20
60 needle tips	TRAEMB-60

RETRACAP compression caps refill

25 compression caps S size	RECAP25-S
25 compression caps M size	RECAP25-M
25 compression caps L size	RECAP25-L

PROSTHETIC DENTISTRY





CAD/CAM PROSTHESIS	52
TEMPORARY PROSTHESIS	54

NUMERYS HC

Hydrid ceramic block for CAD/CAM Special Inlays, Onlays, Crowns, Veneers

ADVANTAGES

High flexural strength
above 200 MPa & fracture
toughness

No post-colouring,
no firing process

Real wear resistance

Recommended
for laboratories

Resistant and flexible material at the same time
(75% ceramics and 25% resin)

Compatible with all dental CAD/CAM systems
except Planmeca

Better edge quality
up to 0.4mm thickness

Real shock absorber

**Easy to mill and to polish in a
few minutes**

Excellent aesthetic results

**Brilliant and long-lasting
performance**

- For the cementation of veneers, use **TotalC-Ram**

PROTOCOL

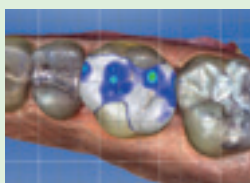
Dr Stéphane Cazier's case



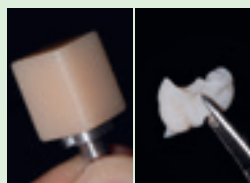
1 Initial view



2 Removal of the amal-
gam, then preparation
of the cavity



3 Computer Aided Design
within 5 minutes



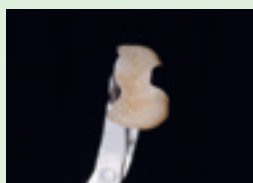
4 Milling completed
within 10 minutes



5 Fitting the onlay after
milling



6 Occlusal control



7 «Light» make-up



8 Bonding and cementa-
tion under single sur-
gical drape: (Iperbond
Ultra +TotalC-ram)



9 Final view

References

2 sizes:

12 (10 x 12 x 15 mm) 14L (12 x 14 x 18 mm)

5 Blocks NUMERYS HC

Size 12, shade A1	NYS-12A1	Size 14L, shade A1	NYS-14A1
Size 12, shade A2	NYS-12A2	Size 14L, shade A2	NYS-14A2
Size 12, shade A3	NYS-12A3	Size 14L, shade A3	NYS-14A3
Size 12, shade A3.5	NYS-12A3.5	Size 14L, shade A3.5	NYS-14A3.5
Size 12, shade B3	NYS-12B3	Size 14L, shade B3	NYS-14B3
Size 12, shade E	NYS-12E	Size 14L, shade E	NYS-14E

Technical data

Compressive strength (Mpa)	448 (±38)
Diametral tensile strength (Mpa)	
Diameter 10 mm	59 (±4)
Diameter 14 mm	51 (±4)
Flexural strength (Mpa)	
Three-point bending test	210 (±11)
Biaxial Flexural strength	173 (±6)
Vickers hardness (VHN, kg/mm²)	85 (±5)

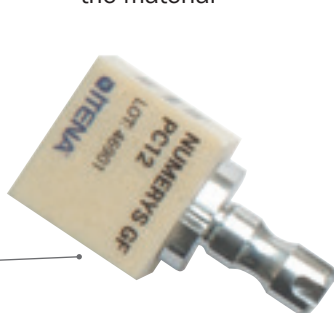
NUMERYS GF

Chairside & Lab Applications Glass fiber composite CAD/CAM for post & core milling

ADVANTAGES

80% unidirectional glass fibers embedded in 20% epoxy resin matrix
Higher number of glass fibers than in traditional glass fiber posts. Homogeneity of the material

Good radiopacity,
no discolouration
of the material
over time

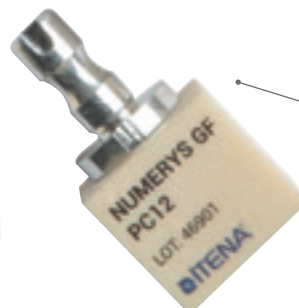


Single component for a better anatomical
fit: **better adhesion** between the post-
and-core system and the root canal

Easy clinical procedure
Same root canal and post & core
preparation as dental glass fiber posts
Same cementation procedure as
traditional post and core systems



Full metal-free post
and core system: no
opacification of the core
required for better
aesthetic results



No risk of
decementation
between the posts
and core build-up
materials

Excellent cost/benefit ratio
compared to cast metal posts

Mechanical properties: **better mechanical resistance**
(+45%) than traditional post and core systems.
Elasticity modulus comparable to dentin's giving the
material a flexibility in the face of constraints and
minimizing the risk of root fracture

Recommended
for laboratories



**IT IS ESSENTIAL TO APPLY SILANE AND AN ADHESIVE BONDING
TO THE MILLED NUMERYS GF POST AND CORE FOR A PERFECT CEMENTATION
AND TO ENSURE THAT THE FINAL RESTORATION IS WATERTIGHT.**

References

5 blocks Numerys GF	NYSGF-BCS
1 disk NUMERYS GF	NYSGF-DSK

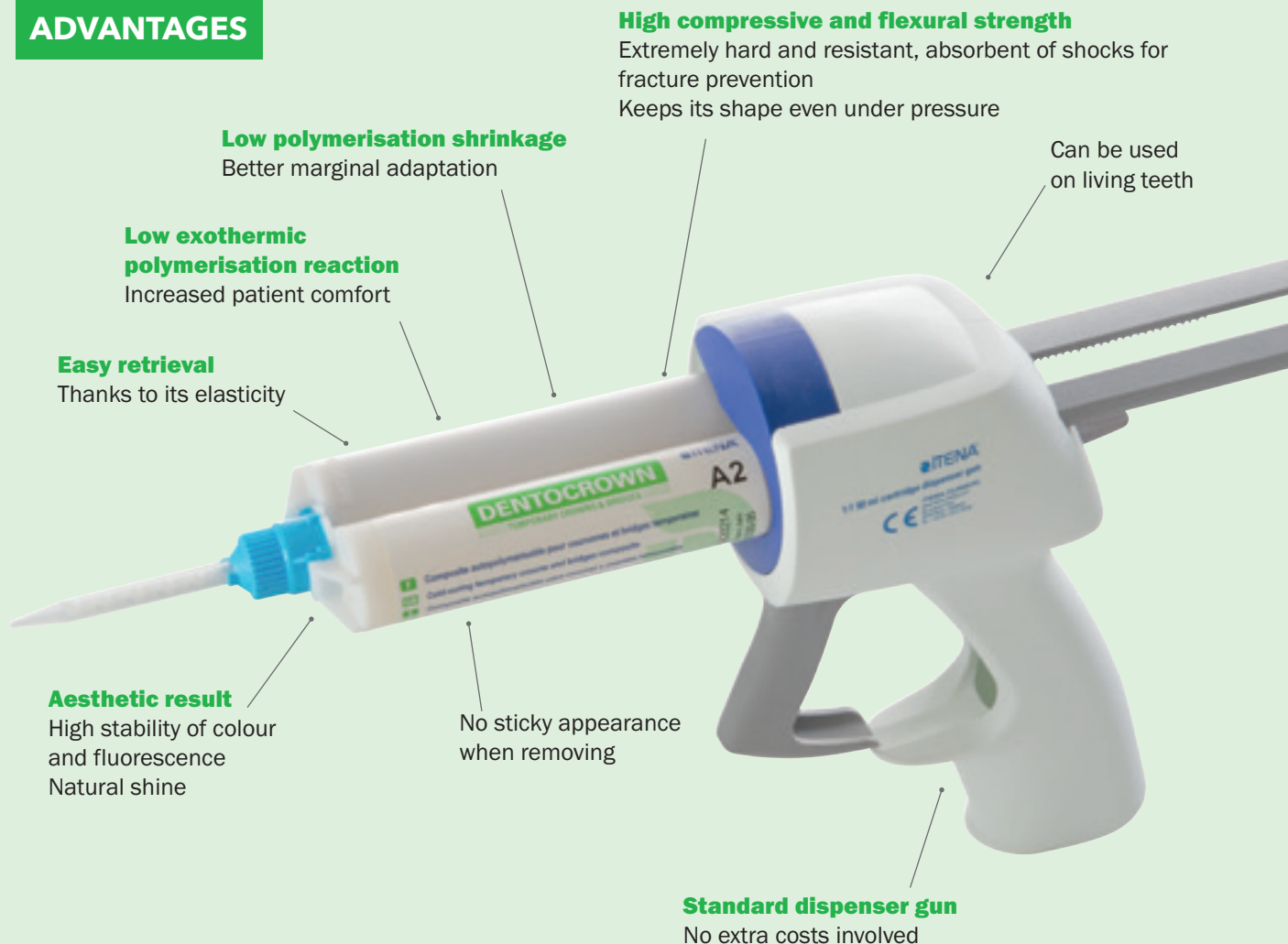
Technical data

Flexural strength	990 MPa
Module of elasticity.....	23,8 GPa
Average diameter of fibers	20 µm
Average fibers per block.....	700 000 fibers
Average fibers per disk	22 millions fibers

DENTOCROWN

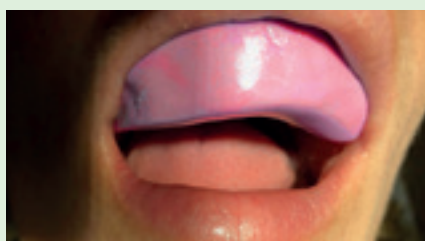
Self-curing resin for temporary crowns & bridges

ADVANTAGES



PROTOCOL

Dr Feldstein Clinical case



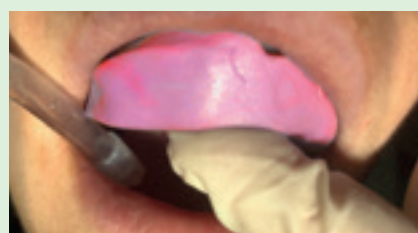
1 Impression



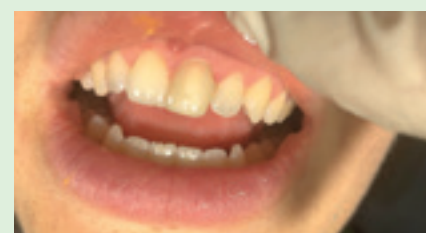
2 Prepared tooth



3 Dentocrown application in the impression



4 Insertion in mouth



5 Final result

PROTOCOL

Dr Dante Martin Estrada Suarez Clinical case



1 Initial view



2 Digital smile design



3 Wax up



3 Dentocrown A2



4 Test drive / Mock up

INDICATIONS

Making of: crowns, bridges, inlays, onlays

References

Cartridges

DentoCrown A1

50 ml (76 g) cartridge + 10 mixing tips.....DWN50-A1

DentoCrown A2

50 ml (76 g) cartridge + 10 mixing tips.....DWN50-A2

DentoCrown A3

50 ml (76 g) cartridge + 10 mixing tips.....DWN50-A3

Gun - Mixing tips

Standard gun 50 ml 1:1

HY-GSII

Mixing tips for cartridge syringes

10 mixing tipsDWNE-10

Syringes

DentoCrown Automix A2

5 ml (8g) automix syringe + 10 mixing tipsDWNAX-A2

DentoCrown Automix A3

5 ml (8g) automix syringe + 10 mixing tipsDWNAX-A3

Mixing tips for automix syringes

20 mixing tips.....DTEM-20

Technical data

High compressive strength	320 MPa
Flexural strength for 10 min.....	40 MPa
Working time	30-50 sec max
Setting time	40-70 sec



Automix syringe

DentoCrown composite resins do not bond with polycarboxylate temporary crowns. To ensure adhesion, a bonding must be applied between the resin and the temporary crown.

HINTS & TIPS

It's possible to rebase DentoCrown

2 ways:

- Remove the viscous (inhibiting) layer that forms on the surface of the temporary tooth with alcohol, and rebase
- Use **DentoTemp** to fill holes

TEMPORARY CROWNS

Translucent polycarbonate temporary crowns designed to fit all clinical cases

ADVANTAGES

Comes in universal shades for all clinical cases

Easy to use and **easy to adjust** thanks to their elasticity

Fast insertion and retention



Perfectly tolerated by periodontal tissue

Many shapes

Resistant to the thermal and chemical variations of the oral cavity



Bite sticks



References

Kit of temporary crowns

180 translucent polycarbonate temporary crowns KCP180

Refills of 5 crowns

Upper Right central incisors

L : 7.5 mm	H : 10 mm	N° 14	RCP14
L : 7.7 mm	H : 10.5 mm	N° 13	RCP13
L : 8 mm	H : 11 mm	N° 12	RCP12
L : 8.5 mm	H : 11.5 mm	N° 11	RCP11
L : 9 mm	H : 12.5 mm	N° 10	RCP10
L : 9.5 mm	H : 13 mm	N° 101	RCP101
L : 10 mm	H : 14 mm	N° 100	RCP100

Upper Left central incisors

L : 10 mm	H : 14 mm	N° 103	RCP103
L : 9.5 mm	H : 13 mm	N° 102	RCP102
L : 9 mm	H : 12.5 mm	N° 19	RCP19
L : 8.8 mm	H : 11.5 mm	N° 18	RCP18
L : 8 mm	H : 11 mm	N° 17	RCP17
L : 7.7 mm	H : 10.5 mm	N° 16	RCP16
L : 7.5 mm	H : 10 mm	N° 15	RCP15

Upper Right lateral incisors

L : 5.7 mm	H : 8.5 mm	N° 24	RCP24
L : 6.2 mm	H : 9 mm	N° 23	RCP23
L : 6.5 mm	H : 9.5 mm	N° 22	RCP22
L : 6.8 mm	H : 10 mm	N° 21	RCP21
L : 7 mm	H : 10.5 mm	N° 20	RCP20
L : 7.3 mm	H : 11 mm	N° 2	RCP2

Upper Left lateral incisors

L : 7.3 mm	H : 11 mm	N° 200	RCP200
L : 7 mm	H : 10.5 mm	N° 29	RCP29
L : 6.8 mm	H : 10 mm	N° 28	RCP28
L : 6.5 mm	H : 9.5 mm	N° 27	RCP27
L : 6.2 mm	H : 9 mm	N° 26	RCP26
L : 5.7 mm	H : 8.5 mm	N° 25	RCP25

Upper Right canines

L : 9 mm	H : 13 mm	N° 300	RCP300
L : 8.5 mm	H : 12.5 mm	N° 301	RCP301
L : 8.2 mm	H : 12 mm	N° 30	RCP30
L : 8 mm	H : 11 mm	N° 31	RCP31
L : 7.8 mm	H : 10.5 mm	N° 32	RCP32
L : 7.5 mm	H : 10 mm	N° 33	RCP33
L : 7.2 mm	H : 9.8 mm	N° 34	RCP34

Upper Left canines

L : 7.2 mm	H : 9.8 mm	N° 35	RCP35
L : 7.5 mm	H : 10 mm	N° 36	RCP36
L : 7.8 mm	H : 10.5 mm	N° 37	RCP37
L : 8 mm	H : 11 mm	N° 38	RCP38
L : 8.2 mm	H : 12 mm	N° 39	RCP39
L : 8.5 mm	H : 12.5 mm	N° 302	RCP302
L : 9 mm	H : 13 mm	N° 303	RCP303

Upper premolars

L : 7.4 mm	H : 10 mm	N° 40	RCP40
L : 7 mm	H : 9.5 mm	N° 41	RCP41
L : 6.8 mm	H : 9 mm	N° 42	RCP42
L : 6.5 mm	H : 8.5 mm	N° 43	RCP43
L : 6.2 mm	H : 8 mm	N° 44	RCP44

Lower premolars

L : 7.5 mm	H : 10.2 mm	N° 50	RCP50
L : 7 mm	H : 10 mm	N° 51	RCP51
L : 6.8 mm	H : 9.3 mm	N° 52	RCP52
L : 6.6 mm	H : 9 mm	N° 53	RCP53
L : 6.2 mm	H : 8.5 mm	N° 54	RCP54

Lower incisors (long)

L : 6.2 mm	H : 12 mm	N° 60	RCP60
L : 5.9 mm	H : 11.5 mm	N° 61	RCP61
L : 5.6 mm	H : 11 mm	N° 62	RCP62
L : 5.3 mm	H : 10.5 mm	N° 63	RCP63
L : 5 mm	H : 10 mm	N° 64	RCP64

Lower incisors (short)

L : 5 mm	H : 8 mm	N° 65	RCP65
L : 5.1 mm	H : 8.5 mm	N° 66	RCP66
L : 5.3 mm	H : 9.2 mm	N° 67	RCP67
L : 5.6 mm	H : 10 mm	N° 68	RCP68
L : 6 mm	H : 10.5 mm	N° 69	RCP69

Bite sticks x1

EC

PREFORMED CROWNS



Upper central incisor



Upper lateral incisor



Canine



Lower lateral incisor



Premolar



Molar

ADVANTAGES

- **Flexible**, easy to use
- Easy adjustment
- Protects the periodontal area
- **Anatomical shape**
- Immediate bite setting
- Can be used with composites, resins and cements

References

Kit 32 Crowns

10 upper incisors + 4 upper lateral incisors + 6 canines + 4 premolars + 4 molars + 4 lower lateral incisors KM0U32

Refills of 5 Crowns	Width	
Right upper central incisors	7.5 mm	RM-ICR75
Right upper central incisors	8.5 mm	RM-ICR85
Right upper central incisors	9.5 mm	RM-ICR95
Right upper central incisors	10.5 mm	RM-ICR105
Left upper central incisors	7.5 mm	RM-ICL75
Left upper central incisors	8.5 mm	RM-ICL85
Left upper central incisors	9.5 mm	RM-ICL95
Left upper central incisors	10.5 mm	RM-ICL105
Right upper lateral incisors	6 mm	RM-ILR60
Left upper lateral incisors	6 mm	RM-ILL60
Right lower lateral incisors	13 mm	RM-ILR130
Left lower lateral incisors	13 mm	RM-ILL130
Right canines	8.5 mm	RM-CR85
Right canines	9.5 mm	RM-CR95
Left canines	8.5 mm	RM-CL85
Left canines	9.5 mm	RM-CL95
Right premolars	7.5 mm	RM-PR75
Left premolars	7.5 mm	RM-PL75
Right molars	9 mm	RM-MR85
Right molars	10 mm	RM-MR95
Left molars	9 mm	RM-ML85
Left molars	10 mm	RM-ML95

AESTHETICS



TAKE HOME WHITENING	60
OFFICE WHITENING	62

PURE DAY ☀

PURE NIGHT 🌙

Whitening kit to be used by day or at night by the patient.

PURE NIGHT:
Ideal for patients with dyschromia



PURE DAY
6% hydrogen peroxide formula
2 hours per day for 7 days

PURE NIGHT
16.5% carbamide peroxide formula
7 hours per night for 7 nights



Realization of the Initial shade checking Final shade checking
tray

References

Kits :

Pure Day Kit ☀

4 whitening syringes 6 % PH (2.4 g)
1 tray box
2 thermoforming laminatesPRD-H6

Pure Night Kit 🌙

4 whitening syringes 16.5 % PC (2.4 g)
1 tray box
2 thermoforming laminates.....PRN-C16

SOME ADVICE FOR YOUR PATIENTS

To keep their teeth white after the treatment, here are some tips to follow:

- Take brushing seriously and use dental floss.
- Have a regular descaling done at your dentist.
- Avoid tobacco, coffee and tea, which discolour teeth.
- Drink a glass of water after consumption of coloring products to avoid stagnation of tannins.
- Renew teeth whitening every 3 to 5 years.

HOME USE PROTOCOL



- 1** Remove the syringe from the fridge and wait for it to reach room temperature. Carefully brush teeth with toothpaste.



- 2** Remove the cap from the end of the syringe.



- 3** Place one drop of gel into each tooth space of the tray. 1/4 of the syringe should be used per tray. Replace the cap on the syringe and return it to the fridge.



- 4** Align the tray on the teeth.



- 5** Spread the gel over the teeth surfaces by rubbing the tray with your finger.



- 6** Remove excess gel from the gums with a wet cotton swab.



- 7** **6% hydrogen peroxide formula:** recommended use: 2 hours a day
16.5% carbamide peroxide formula: recommended use: 7 hours per night



- 8** Do not eat, drink beverages that can stain or smoke during this time.



- 9** Remove the tray.



- 10** Carefully brush teeth with toothpaste.



- 11** Clean the tray with fresh water and a toothbrush.



- 12** Store the tray in its case.

References

Refills

Pure Day ☀

4 whitening syringes 6 % HP (2 ml / 2.4 g) PDH6-RF

Pure Night ☾

4 whitening syringes 16.5 % PC (2 ml / 2.4 g) PNC16-RF

Pure Care

4 desensitizing syringes (2.3 g) PRC-DSB

Pure Bleaching Tray

10 thermoforming laminates, 1 mm thick PRB-10P

PURE OFFICE

Professional office whitening gel

ADVANTAGES

Original and unique formula increasing the brightness and fluorescence of the teeth

35% hydrogen peroxide

Neutral pH for easy placement on the surface of the teeth and prolonged impregnation to facilitate the complete release of hydrogen peroxide and ensure optimal patient comfort.



CHEEK RETRACTOR

Fully adjustable cheek-retractor providing a wide operating field.

FIND IT PAGE 27



Set of 2 panoramic cheek retractorsEJP-2BT

References

Pure Office Kit

1 whitening syringe 35 % HP (5 g) + 1 mixing tip + 2 gingival barrier syringes of 1 ml (1.5g) with curved tips..... PRO-H35

Refill

Pure Office tips

2 mixing tips for 35 % HP whitening syringe..... PROEM-2

Pure Protect

4 gingival barrier syringes with curved tips PRP-BG

ACCESSORIES

CARE & PREVENTION

RESTORATIVE DENTISTRY

PROSTHETIC DENTISTRY

AESTHETICS

AIREO V-LOCK SYSTEM

Disposable tips for air/water syringes

ADVANTAGES

Dry air guaranteed

Two separate pipes for air and water without compromising the quality of the spray

Reduces the risk of bacterial migration

Single use

Reduced risk of cross-contamination

«V» shaped notch for easy insertion

Very flexible tip

Stays in the angle desired by the dentist

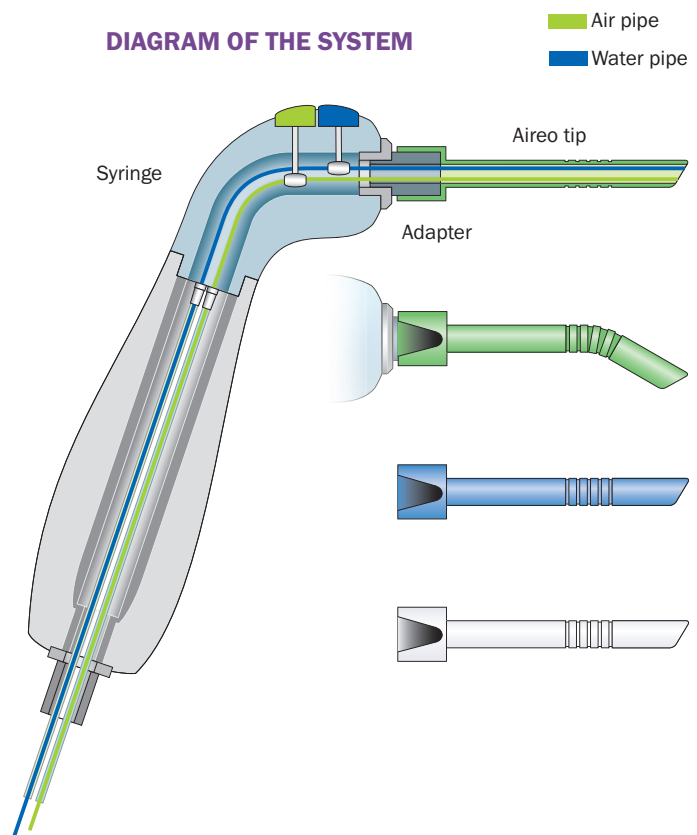
Grooves enhance tip flexibility

Allows access to hard-to-reach areas **without altering the quality of the sprays**

Made in France

Recyclable plastic of medical grade

DIAGRAM OF THE SYSTEM



SETTING UP

- Push the tip onto the adapter for a perfect fit
- The tip is firmly attached to the adapter to avoid the creation of a possible air chamber and a resulting pressure loss at the end of the tip
- Simply pull off the tip to change it



References

Box of 200 Aireo V-Lock System tips

Green	AIRU200-V
Blue	AIRU200-B
White	AIRU200-A

PLAS'TIP

Flexible plastic tip for periodontal use with two lateral openings

ADVANTAGES

Two lateral openings:

- Better distribution of the product
- Homogeneous diffusion
- Less pressure in the gingival pockets

0.4 mm diameter

Flexible plastic

Anatomical and atraumatic shape

Luer-Lock compatible



Anatomic and atraumatic

- Same size as periodontal probes - 0.4mm
- No interference with the gums' epithelial attachment during insertion
- Flexibility of the tip - atraumatic



References

Plastic tips

Box of 25 plastic tips PLTIP-25

Periodontal cleaning

- The tip adapts to the irregularities of the gingival surface
- Easy insertion and access to periodontal pockets
- Complete cleaning of the gingival furrows

HINTS & TIPS

Compatible with root canal cleaning

TIPS

References

For automix syringes

Mixing tips for DENTOTEMP

Refill of 20 mixing tips DTEM-20

Fine tips for DENTOCORE

Length: 100 mm Ø 1.1 mm

Refill of 25 mixing tips

+ 25 fine intra-oral tips DCE-50

Extra-fine tips for DENTOCORE

Length: 135 mm Ø 0.09 mm

Refill of 25 mixing tips

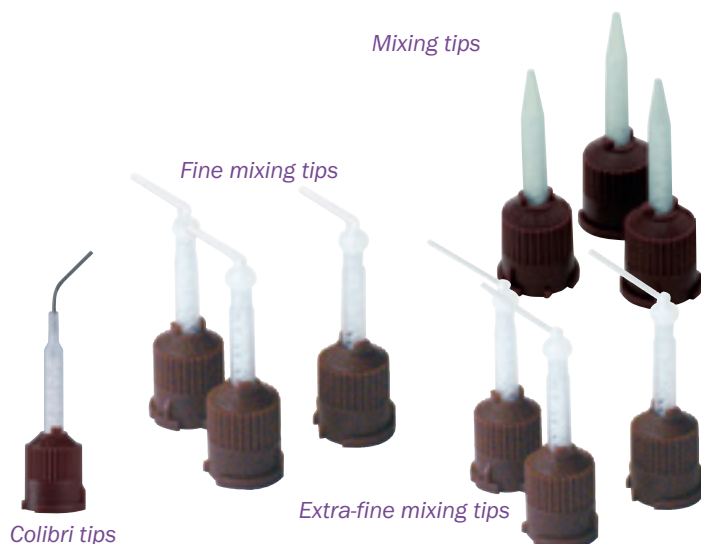
+ 25 extra-fine intra-oral tips DCEXF-50

Colibri tips

Ø 0.09mm

Refill of 10 mixing tips

Colibri intra-oral tips DCCOL-10



For double cartridges

Mixing tips for DENTOCROWN

Refill of 10 mixing tips for cartridges DWNE-10

Fine intra-oral mixing tips for DENTOCORE

Refill of 25 mixing tips

+ 25 intra-oral tips DTA



Needle tips

25G needle tips for PREVENT SEAL

Ø 0.05 mm

Refill of 20 needle tips PVSE-25G

22G extra-fine needle tips for DENTOETCH

Ø 0.07 mm

Refill of 20 extra-fine needle tips 22G DEA-20

16G extra-fine needle tips for TRAXODENT

Ø 1.3 mm flexible

Refill of 20 needle tips TRAEMB-20

16G extra-fine needle tips for TRAXODENT

Ø 1.3 mm flexible

Refill of 60 needle tips TRAEMB-60



MICRO-APPLICATORS

References

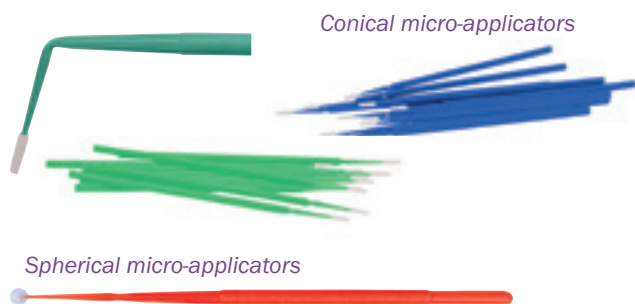
Conical

50 blue micro-applicators ACB-50

50 green micro-applicators ACV-50

Spherical

50 red micro-applicators ASR-50



itena-clinical.com

A REDESIGNED WEBSITE

TO FIND EVERYTHING WITH A MINIMUM OF CLICKS

New design, optimized ergonomics, access to product ranges by theme and regular updates to give you the right information at the right time: improving your virtual environment makes your everyday environment easier too.



**PRODUCT
INFORMATION**

**CLINICAL
CASES**

VIDEOS

**SCIENTIFIC
STUDIES**



ITENA CLINICAL - 83 avenue Foch - 75116 Paris. France

+33 1 45 91 61 40 / contact@itena-clinical.com / www.itena-clinical.com